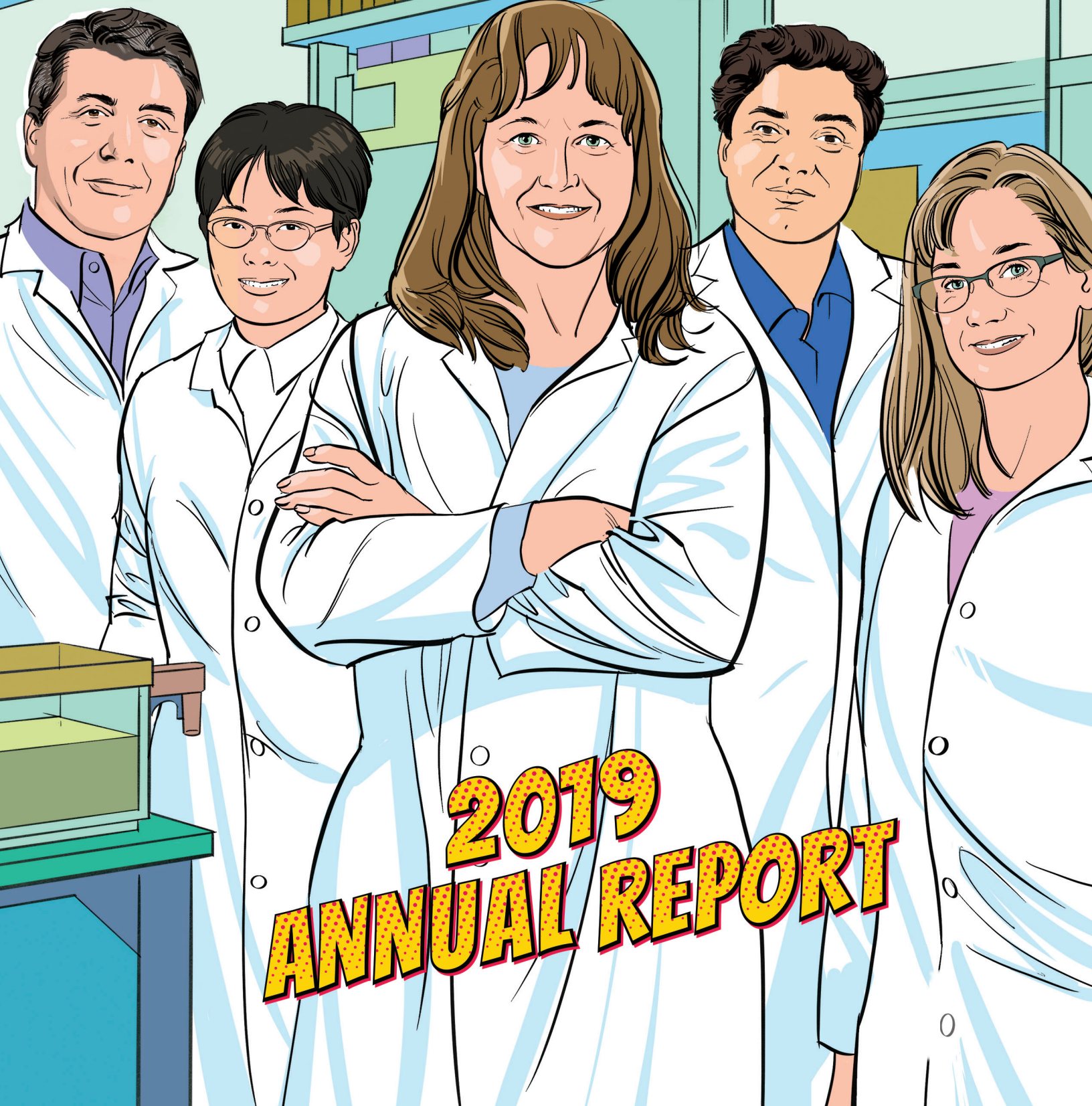


OMRF



2019
ANNUAL REPORT

**OKLAHOMA
MEDICAL
RESEARCH
FOUNDATION**

**2019
ANNUAL REPORT**

PRESIDENT'S LETTER

THE YEAR THAT WAS

I joined OMRF 14 years ago. And every year I've been here, we've put out an annual report to the people who support us most generously.

Like most organizations, OMRF uses the annual report as a chance to bring our key stakeholders up to date on what we've accomplished in the past year. And, yes, we also appreciate the opportunity to brag on our scientists and our organization.

In a perfect world, the report would land in your mailbox in January. But, as we've all been reminded in recent months, this world is far from perfect.

First, we need to generate our donor honor roll. We want to make double-dog sure that everyone who should be in there is, that every donor's name is spelled correctly, and that folks are recognized exactly as requested.

That's a labor-intensive process, especially with the long tail of year-end giving, and we usually don't get that list shipshape until mid-February. There's also the small matter of deciding which of the year's many stories are "report-worthy," interviewing subjects, writing up the narratives, editing copy, producing artwork for the report, putting the whole package together, proofreading everything several more times, and, finally, printing and mailing the book.

So, this past March, we were in the thick of that process. And then the world stopped spinning on its axis. Not literally, of course. But when Covid-19 hit, life as we know it changed, pretty much overnight.

Understandably, our 2019 annual report took a backseat. We scrambled to protect our employees and

shutter all but essential research projects, while still managing to maintain our entire workforce and to keep them paid. Our scientists threw themselves headlong into helping Oklahoma scale up the state's coronavirus testing capacity and expanding their existing research projects into experiments and clinical studies that could help combat the pandemic. You'll read about these new projects in the upcoming issue of *Findings* magazine. And, around this time next year, in our annual report. The 2020 version.

Eventually, the world started seeming a little more like

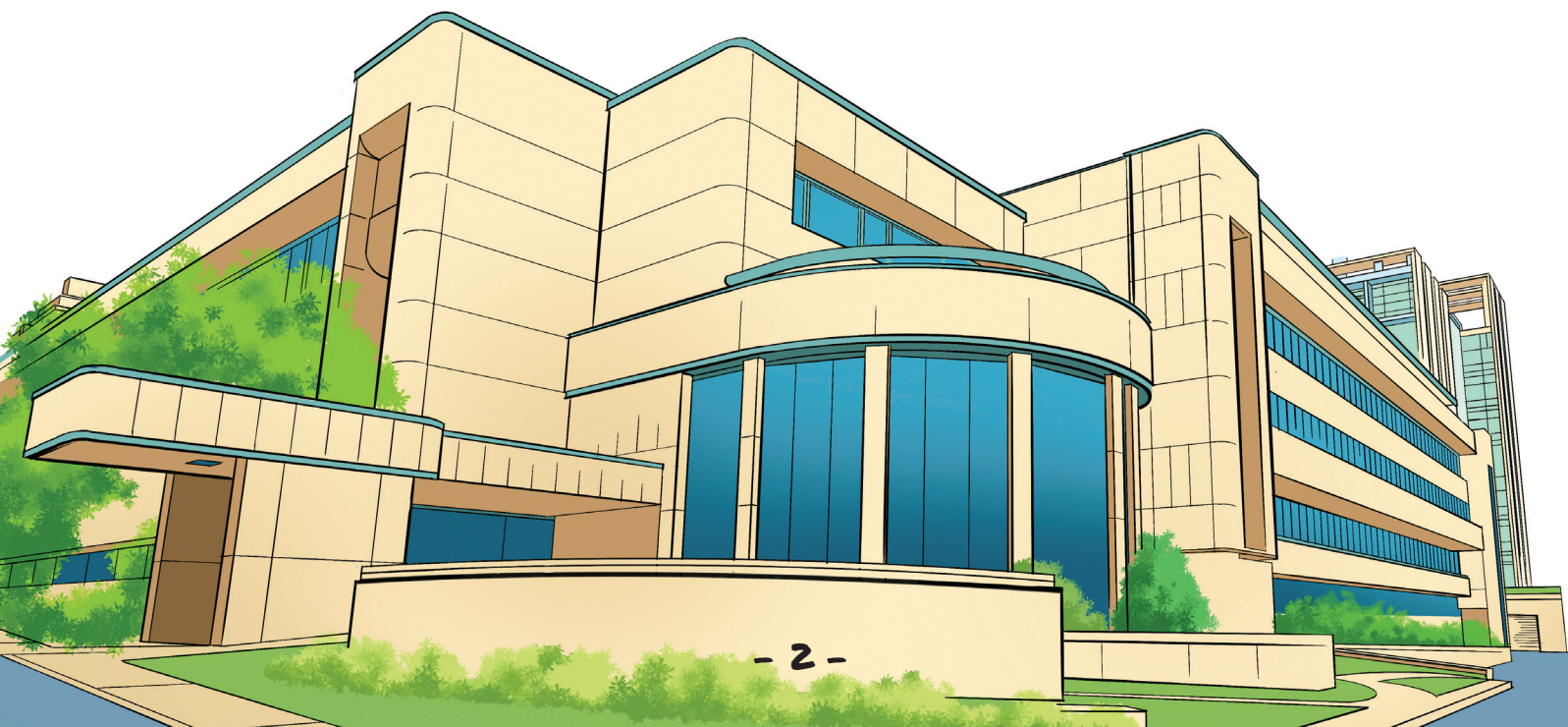
the one we knew before Zoom (with a capital Z) was a verb and when surgical masks were worn only by surgeons. Our minds began to make room for topics other than coronavirus. So, we began dusting off the projects we'd left sitting on the shelf when we sheltered in place.

When we took a look at the draft of the 2019 annual report you're now holding, we decided it was too important not to finish—and too important not to share. It's the chronology of a year in which we took big steps we hope will change the lives of untold patients.

We hope you'll enjoy reading about the progress your generosity has made possible. The world may have changed in these past few months, but our gratitude to you has not. Thank you for believing in OMRF and our mission. With your help, we'll continue to help Oklahomans and people everywhere live longer, healthier lives.

THESE DAYS, 2019 CAN
SEEM LIKE A LONG,
LONG TIME AGO.

Stephen M. Puscott, MD





JANUARY
COMING FULL CIRCLE



DR. COURTNEY GRIFFIN

AN OMRF RESEARCHER RETURNS TO HER ROOTS. WITH A TWIST.

As a teen, Dr. Courtney Griffin's first taste of laboratory work stemmed from plants like the ones that populated the fields in her native Athens, Georgia. "Our research was funded by big tobacco companies and focused on insect viruses in worms that ate tobacco leaves." So, it represented a perfect circle of sorts when, in January 2019, the Oklahoma Center for Adult Stem Cell Research named OMRF's Griffin its new scientific director.

Using funds paid to the state to resolve litigation against cigarette makers, the Oklahoma Tobacco Settlement Endowment Trust created the Center in 2010. The idea was to use funds generated by cigarette sales to stimulate state research in the emerging field of adult stem cell technology, which had demonstrated promise in a number of disease areas, including cancer. Over the ensuing decade, the Center, which is housed at OMRF, awarded \$17 million in grants to Oklahoma scientists focused on stem cell research. This investment has paid major dividends, growing the community of Oklahoma scientists who study this important field and resulting in more than \$90 million in additional grants as a result of projects launched through the Center.

When founding scientific director Dr. Paul Kincade retired, the Center tapped Griffin to succeed him. While the two researchers had been OMRF colleagues for 11 years, they held different scientific interests.

A cardiovascular biologist with degrees from Harvard and the University of California, San Francisco, Griffin's research at OMRF focuses on genes that regulate blood and lymphatic vessels. Her work has implications for a broad spectrum of health challenges, including cancer, heart disease, aneurysm and toxic drug overdose.

In her new role at the Center, Griffin saw the opportunity to expand the scope of its vision to include work in regenerative medicine, a field closely related to stem cell biology. "Regenerative medicine challenges us to harness stem cell and development biology research into discovering new ways of repairing, replacing or rejuvenating disease-damaged organs in the body," she says. Griffin is particularly interested in how regenerative medicine might open new doors for treating smoking and obesity-related diseases, both of which afflict Oklahomans at disproportionate rates.

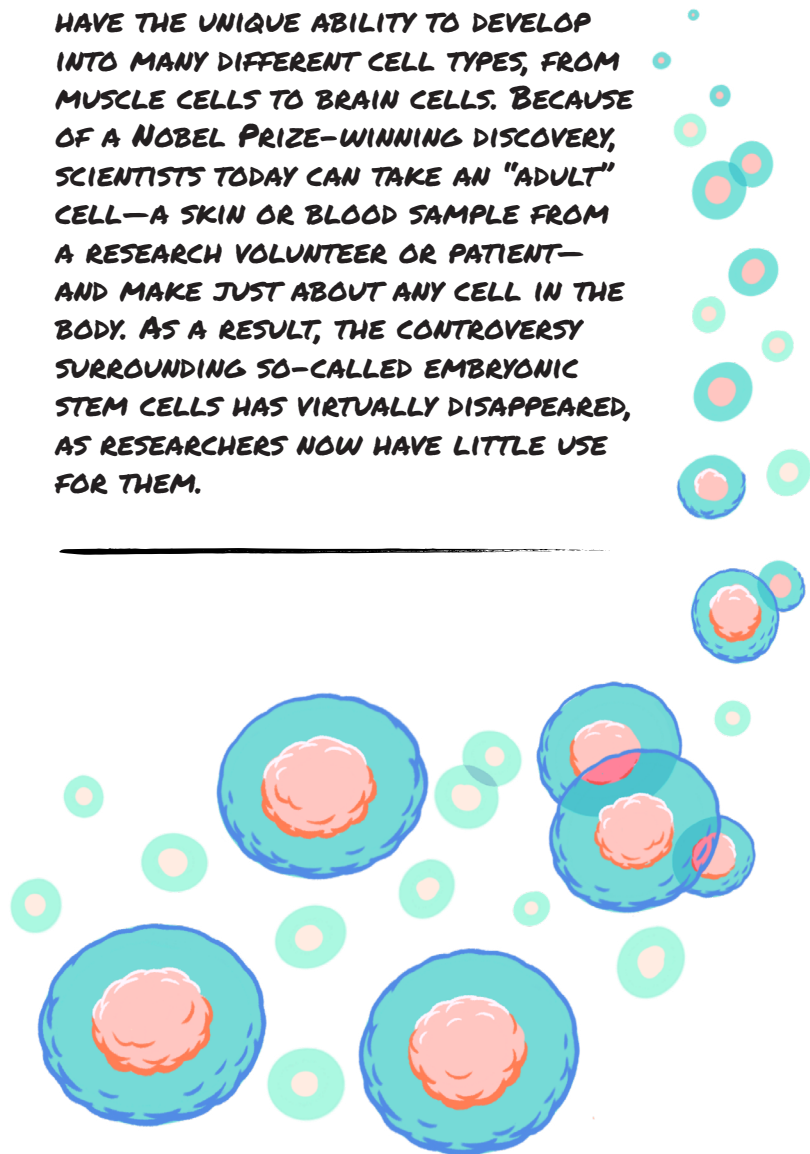
While taking on her new role at the Center, Griffin continues her laboratory work at OMRF, where later in the year she received a seven-year grant from the National Heart, Lung and Blood Institute. The award enables her to pursue novel research into blood vessel function and factors that lead to uncontrolled bleeding. "Seven years is like paradise to a scientist," says Griffin. "This will give us the opportunity to dig in on basic science questions that could lead to new drugs

and therapies for devastating conditions like aneurysms and coronary artery disease."

The grant was awarded under a new federal program to provide sustained support to scientists who have established themselves as thought leaders in key research areas. "Dr. Griffin has emerged as an expert in the field of protease-mediated vascular stability," said Dr. Yunling Gao, a program officer at the National Heart, Lung and Blood Institute. "We look forward to her new breakthroughs and achievements for years to come."

WHAT'S A STEM CELL?

STEM CELLS ARE HUMAN CELLS THAT HAVE THE UNIQUE ABILITY TO DEVELOP INTO MANY DIFFERENT CELL TYPES, FROM MUSCLE CELLS TO BRAIN CELLS. BECAUSE OF A NOBEL PRIZE-WINNING DISCOVERY, SCIENTISTS TODAY CAN TAKE AN "ADULT" CELL—A SKIN OR BLOOD SAMPLE FROM A RESEARCH VOLUNTEER OR PATIENT—AND MAKE JUST ABOUT ANY CELL IN THE BODY. AS A RESULT, THE CONTROVERSY SURROUNDING SO-CALLED EMBRYONIC STEM CELLS HAS VIRTUALLY DISAPPEARED, AS RESEARCHERS NOW HAVE LITTLE USE FOR THEM.



FEBRUARY

GENE AND WILLIE TOGETHER AGAIN

LET'S DO IT AGAIN FOR MY 90TH, H.E. "GENE" RAINBOLT HAD ALWAYS SAID.

When the OMRF Life Director and Chairman Emeritus of BancFirst turned 80 in 2009, rather than a typical birthday celebration, he rented out the Oklahoma City Golf and Country Club and hired country music legend Willie Nelson to play. Instead of gifts, the newly minted octogenarian asked guests to donate to cancer research in honor of his late wife, Jeannine.

And donate they did, to the tune of \$340,000. Rainbolt split the proceeds between two of his favorite charities: OMRF and the Stephenson Cancer Center.

In February, Rainbolt marked the 10th anniversary of that celebration event—and the 90th anniversary of his birth—with a reprise.

Once again, he hosted nearly 1,000 guests, this time at the National Cowboy and Western Heritage Museum. After the crowd loaded up on beer and barbecue, Nelson (at age 85, no spring chicken himself) toured them through the many high notes of a singing and songwriting career that includes standards like "Crazy" and "On The Road Again."

Rainbolt enjoyed the festivities, ditching his typical banker's uniform of suit and tie for a beanie and a shirt festooned with an image of Nelson's favorite semi-legal

weed. But he was happiest with the results: \$440,000 raised for cancer research, with OMRF and Stephenson once again the beneficiaries of this largesse.

"I hope these gifts will help make a difference for the patients and families who have to face this terrible disease," says Rainbolt.

At the event, Rainbolt saluted others in the audience who'd also entered their 10th decade. Dubbed the Nonagenarian Society, the group subsequently met at OMRF in November, where Rainbolt and a dozen fellow Oklahomans aged 90 to 99 listened to a scientific presentation on diseases of aging.

Rainbolt envisions that the group, which now counts 41 members, will meet twice a year and that its ranks will continue to swell as it attracts more seniors interested in medical research. "Whoever just turned 90, that's who we'll have serve as chair," he jokes.

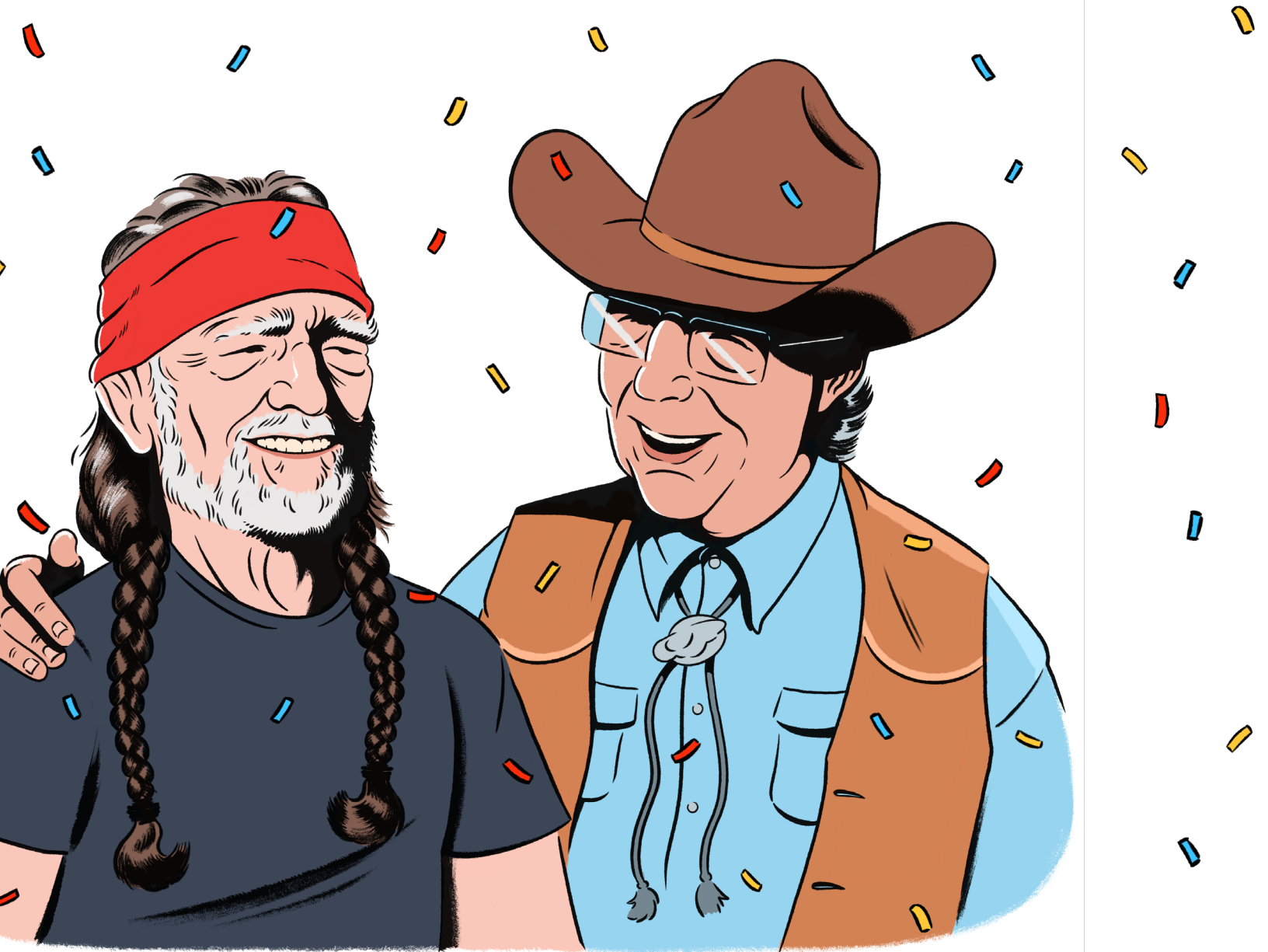
While Rainbolt is in good health, he says he's not planning a third installment of the Willie Nelson event for his 100th birthday. At least not yet.

Still, we're going to keep the calendar open for February 2029. Just in case.

CANCER RESEARCH AT OMRF



- **DR. MAGDALENA BIENIASZ IS TARGETING NEW OVARIAN CANCER TREATMENTS BY CREATING UNIQUE TUMOR MODELS WITH CELLS DONATED BY PATIENTS AT THE STEPHENSON CANCER CENTER.**
- **BY UNDERSTANDING PROCESSES THAT UNDERLIE THE REPLICATION AND REPAIR OF DNA, DRs. ROBERTO PEZZA AND CHRIS SANSAM AIM TO FIND NEW WAYS TO PREVENT CERTAIN CANCERS.**
- **DRs. GARY GORBSKY AND DEAN DAWSON ARE INVESTIGATING WHETHER DEFECTIVE COMPONENTS OF SO-CALLED CELL CHECKPOINTS CAN AID IN THE DESIGN OF ANTI-CANCER DRUGS.**



**A LONGTIME FRIEND THROWS
A BIRTHDAY FUNDRAISER FOR
CANCER RESEARCH AT OMRF.**



MARCH-APRIL
A RARE DISEASE

A LIFE TRANSFORMED



Jamie Mangelinkx used to be that person. You know the type: Always going, going, going. “There never were enough hours in the day to do everything I wanted,” says Mangelinkx, 49. “On Saturday, I’d play 18 holes of golf. The next morning, I’d wake up and do it again.”

Her professional life spanned many different fields—retail, design, healthcare. She’d gone back to school and had almost finished the classwork she needed to apply to dental school, when she developed a cough. It wouldn’t go away. The cough worsened, yet she avoided the doctor, fearing a dire diagnosis. When she finally saw her physician, he took CT scans and x-rays of her lungs. The news was as bad as she could have imagined: lung cancer.

Mangelinkx’s doctor in Enid referred her to a pulmonologist in Oklahoma City, who performed a lung biopsy. But rather than confirming the earlier diagnosis, she received a new one. “They told me I had sarcoidosis.”

The disease takes its name from the tumor-like lumps it causes, which researchers initially believed to be a form of sarcoma, a type of cancerous tumor. The lumps, known as sarcoids or granulomas, are not cancerous. However, they cause intense bouts of pain. And if too many form in a single organ, it can lead to organ failure or even death.

The rare illness, which strikes fewer than 1 in 2,000 Americans, seems to start in the immune system, eliciting rampant inflammation. So, doctors typically try to combat it with drugs that suppress the immune system.

For Mangelinkx, that meant high doses of steroids. Bed-bound, her weight ballooned to almost 300 pounds. She had to use a walker, and the drugs destroyed her teeth and caused uncontrollable shaking. “Between the disease and the treatments, it robs you of so much,” she remembers. “I’d been a free spirit who traveled and golfed and scuba-dived. And now I couldn’t get out of bed without help.”

Eventually, the steroids stopped working, and the disease began to attack other organs. Physicians found granulomas in her heart and her eyes, where they’ve begun to affect her vision. “What you’re looking at is like a puzzle, and you can have pieces missing,” she says. Doctors are now treating her with methotrexate, an immune-suppressing drug often used in chemotherapy. She has “good days and bad days,” but she is faring better under this regimen than with steroids. Still, she can’t work, and she wonders why a disease so rare has struck not only her, but also her sister.



DR. COURTNEY MONTGOMERY

This past March, OMRF’s Dr. Courtney Montgomery received a grant from the National Heart, Lung and Blood Institute to try to help solve this mystery. “Our team has led the charge to define the role of genetics in sarcoidosis,” she says. “However, there are still many unknowns at work in this complicated disease, and this grant will help us explore possible solutions to these unanswered questions.”

The grant will also help Montgomery recruit new patients and healthy volunteers to collect samples for OMRF’s Sarcoidosis Research Unit, the only one of its kind in the state. “Our goal is to enroll 200 patients and match them with healthy controls—those without a sarcoidosis diagnosis,” says Montgomery. “Through this work, we hope to better characterize what exactly is going wrong in the body and discover what triggers the disease.”

Among those participating in the study is Mangelinkx, who made the drive to OMRF from Ponca City, where she now lives. After she filled out questionnaires and donated blood for research, says Mangelinkx, “Dr. Montgomery sat with me quite a while. That was really neat.”

Mangelinkx understands that any findings most likely will not benefit her directly. Still, she’s happy to lend a hand in any way she can. “I hope that researchers can take what they learn from me and help somebody else.”

“I HOPE THAT RESEARCHERS CAN TAKE WHAT THEY LEARN FROM ME AND HELP SOMEBODY ELSE.”

JAMIE MANGELINKX

MAY-JUNE

DOES DOPAMINE HOLD THE KEY TO ALZHEIMER'S?

Just about every one of us knows someone who's been struck by Alzheimer's disease. In the U.S., nearly 6 million people suffer from the deadly, memory-robbing illness. Worldwide, the number is estimated at 44 million.

"Alzheimer's is the most commonly diagnosed neurodegenerative disorder," says OMRF's Dr. Michael Beckstead. And with a rapidly aging population, experts predict disease rates could triple by 2050.

Beckstead has spent two decades studying dopamine, a naturally occurring chemical responsible for voluntary movement and the perception of reward in the brain. "Dopamine is what makes you want to get off the couch and enjoy activities," he says.

He utilizes experimental models to examine what can happen when things go wrong in the brain with neurons that interact with dopamine. In the past, his work has largely focused on Parkinson's disease—when too little dopamine is present—and drug addiction, where there is too much of the chemical.

Since joining OMRF from the University of Texas Health Science Center at San Antonio, he's also begun studying

whether the chemical plays a role in Alzheimer's. "Although dopamine has never been studied in this context, we have a lot of evidence to suggest that it's involved, especially in the initial stages of disease," he says.

Using mice that have been genetically engineered to develop a condition resembling Alzheimer's, Beckstead and his research team are looking for functional changes in the rodents' dopamine cells early in the disease process. In people, alterations in these cells can spark a variety of behavioral changes similar to those seen in the initial phases of Alzheimer's. "Before memory loss and cognitive impairment, patients show symptoms that include depression, trouble sleeping and apathy," Beckstead says.

In the mice, Beckstead's initial goal will be to determine whether dopamine changes accompany disease onset. "It's a simple question that nobody has ever asked." The reason, he says, is that "we've only had the technology to do this work for a few years."

The project has spurred the interest of the National Institute on Aging, which in June 2019 awarded Beckstead funding for the project. If successful, it could plot a new path for scientists seeking to develop a drug or other interventions to slow or halt Alzheimer's in humans.

Despite the failure or abandonment of more than 100 experimental medications for Alzheimer's, Beckstead remains optimistic about the possibilities for new therapies. "I'm a firm believer that treatments for a lot of brain diseases will come from targeting specific cellular pathways like this one."



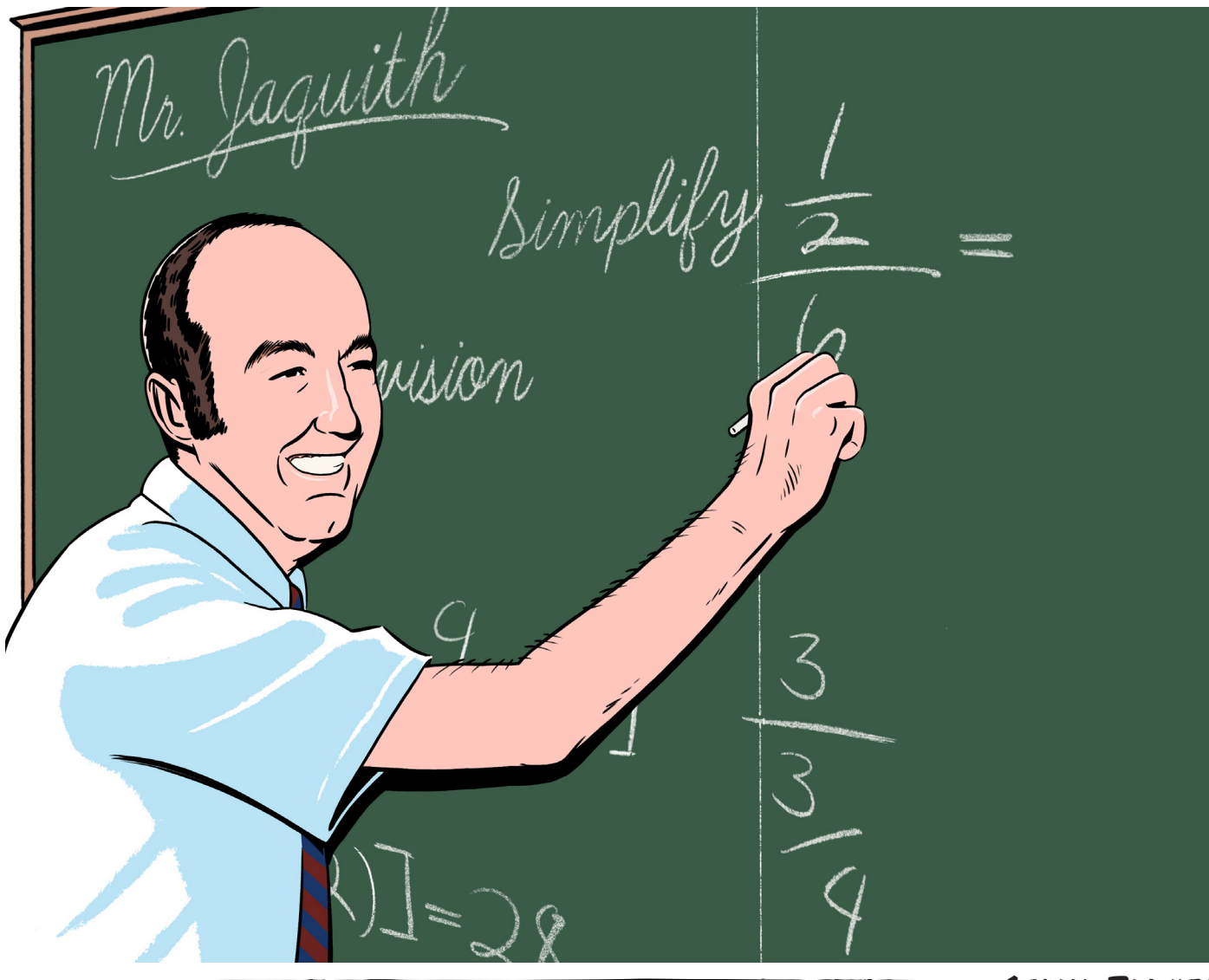
DR. MICHAEL BECKSTEAD

A BRAIN CHEMICAL THAT REWARDS BEHAVIOR MAY ALSO CONTRIBUTE TO THE DEADLY, MEMORY-ROBBING ILLNESS.



JULY

THE GIVER



GERALD JAQUITH

The farmhouse dated back further than anyone could remember. Records were hard to come by, but Gerald Jaquith's family seems to have built it when they settled the property around the time of the Land Run.

Jaquith had grown up in the small, one-story frame home. He helped his dad tend the nearly 1,000 acres of land that surrounded it in Waynoka, a small farming community in western Oklahoma. On that land, the Jaquiths grew wheat and raised cattle.

After college, Jaquith made his way to Texas and New Mexico, teaching high school math in both places. But when his father and brother passed away, he returned to Waynoka in 1984 to help his mother run the farm. He continued teaching math in the Shattuck and Ringwood schools, encouraging his charges to head to college and expand their horizons, much as he had.

This past July, OMRF Senior Director of Development Sonny Wilkinson received a call from John Meinders, an attorney in Woodward. Meinders said that his client, Gerald Jaquith, had died in a farming accident at the age of 78 and that he'd left his entire estate to OMRF.

Wilkinson had never met Jaquith. When he checked foundation records, he found that Jaquith had been giving to OMRF since 1987. Over the ensuing 33 years, he'd donated a total of about \$7,500, including gifts as small as \$5, but nothing that would've predicted the generosity he showed the foundation upon his death.

Meinders sold Jaquith's farm to a neighbor and liquidated the remainder of his assets, which also included savings accounts and bonds. When the process is complete, Meinders estimates OMRF will receive more than \$2 million from the estate.

A QUIET LIFE YIELDS AN UNEXPECTED BOUNTY FOR MEDICAL RESEARCH.

Jaquith never told Meinders why he chose OMRF as his beneficiary, but the attorney suspects it stems from the loss of his brother and parents to heart disease. "Gerald was a man with vision and a strict set of values. He always wanted to help other people."

Mark Dickinson, a friend who helped Jaquith tend his farm for many years, described him as "a good-natured, everyday kind of person, the type of guy who would stop to help someone broken down on the side of the road."

Dickinson says he wasn't surprised when he learned his friend had left his estate to charity. "He was kind-hearted about everything he did."

When OMRF's Wilkinson visited Jaquith's farm after his passing, he found the remains of a life lived simply and frugally: Tinkerbelle, the dwarf cow with a crippled leg that

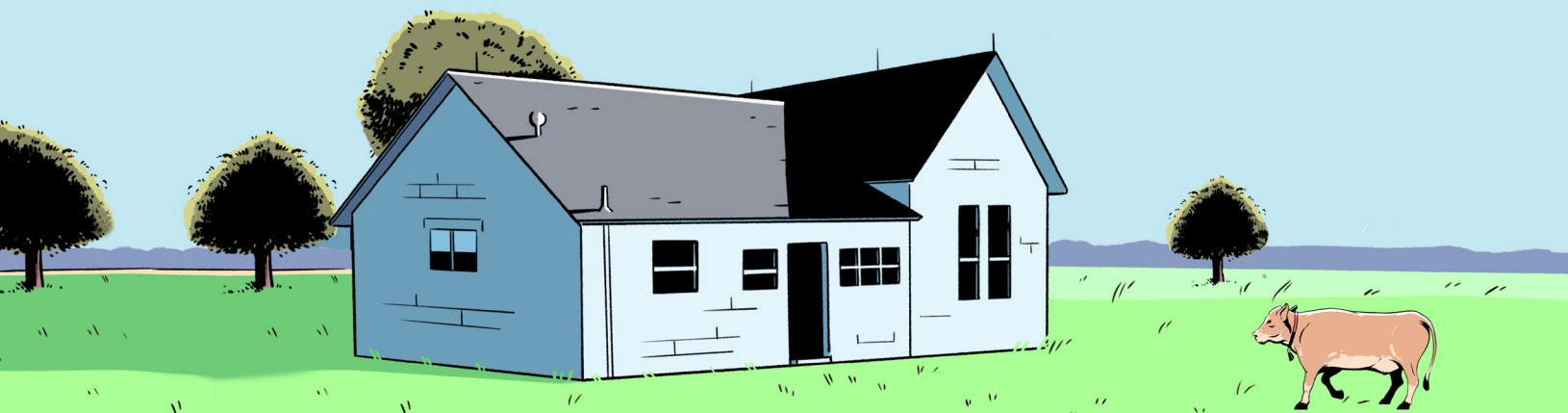
he'd chosen to keep as a pet; a cache of family photos; the 1986 truck he was still driving on the day of his death. In the family farmhouse where Jaquith lived most of his life, atop a stack of documents and a neatly folded pair of new overalls on the kitchen table, Wilkinson also discovered OMRF's 2015 annual report.

Like all donations to OMRF, Jaquith's will go 100 percent to biomedical research. And because he did not designate the gift to investigate any particular type of disease, the funds will be put to use in the laboratories where they're needed most.

"We'll never know exactly why Mr. Jaquith decided to help OMRF, but we're extremely grateful he did," says Wilkinson. "I only wish I'd had a chance to meet him and to say thank you."

A LEGACY OF GENEROSITY

- **SINCE 2000, OMRF HAS RECEIVED AN AVERAGE OF \$2.5 MILLION IN GIFTS FROM ESTATES AND TESTAMENTARY TRUSTS EACH YEAR.**
- **IN FISCAL YEAR 2019, THOSE PLANNED GIFTS TOTALED \$3.1 MILLION.**
- **OMRF USES GIFTS FROM ESTATES AND TRUSTS TO FUND RESEARCH IN ALL DISEASE AREAS, WITH DONORS MOST OFTEN DESIGNATING FUNDS FOR PROJECTS IN CANCER, ALZHEIMER'S AND HEART DISEASE. SOME ALSO CHOOSE TO EARMARK THEIR BEQUESTS FOR ENDOWMENT, WHERE THE DONATIONS BECOME A PERPETUAL SOURCE OF SUPPORT FOR OMRF SCIENTISTS AND THEIR WORK.**





AUGUST-SEPTEMBER

FIGHTING AUTOIMMUNE DISEASE—AND BIOTERRORISM

When Congressman Tom Cole stood in front of a pavilion filled with OMRF employees in August, he offered two simple messages.

First, he praised all of the researchers and staff whose work had resulted in the renewal of a pair of major federal grants to OMRF. “Pat yourselves on the back and take a little credit,” he told the crowd of several hundred employees who’d assembled for the event.

Then, he exhorted the researchers to “go save humanity in the next five years.”

Of course, the congressman was joking about that second part. Well, mostly.

As the ranking Republican on the House Appropriations subcommittee that funds the National Institutes of Health, Cole knows biomedical research well. Under his leadership, the NIH’s budget grew substantially.

With the last election, of course, control of the House flipped. Happily, that development has not stalled ongoing support of the NIH, the largest funder of biomedical research in the world.

Cole and his colleagues are now working with Democrats to ensure that growth continues. And the newest member of Oklahoma’s delegation, Democratic Congresswoman Kendra Horn, has eagerly taken up the effort.

She joined Cole at OMRF to announce the successful renewal of two major NIH grants. The awards, each covering a five-year period, will fund OMRF research on autoimmune diseases and human exposure to anthrax. OMRF scientists won both awards after nationwide competitions that included some of the country’s leading academic medical centers.

The grants “continue the strong trajectory of biomedical research growth in Oklahoma City,” Horn said. “When federal grants can catalyze research that benefits Oklahoma’s economy and patients, everybody wins.”

The funding will support laboratory projects as well as clinical studies to help Oklahomans suffering from

conditions such as multiple sclerosis and lupus. They will also deliver significant economic benefits by creating and supporting research jobs.

Through the NIH’s Autoimmunity Centers of Excellence program, Dr. Judith James and her colleagues will receive support for projects focused on improving understanding of and treatments for autoimmune diseases, which affect an estimated 1 in 12 Americans. The second award went to research led by Dr. Mark Coggeshall that began after the anthrax attacks in late 2001. OMRF scientists are trying to understand the body’s response to anthrax bacteria and find ways to counter it.

Both of these projects represent at least a decade’s worth of work at OMRF. This was the third time the autoimmunity grant has been renewed and the fourth successful re-upping of the anthrax grant.

In the time since each project was initially funded, the scientists have made significant strides forward. For example, the last round of funding helped OMRF launch a pair of clinical trials aimed at preventing lupus and rheumatoid arthritis—the first of their kind in the world. It also has enabled researchers to identify the part of anthrax that initiates the body’s reaction to the bacteria, how the immune system recognizes the bacteria, and how the bacteria cause damage.

These are all crucial steps forward. But steps forward are not the same thing as reaching a destination.

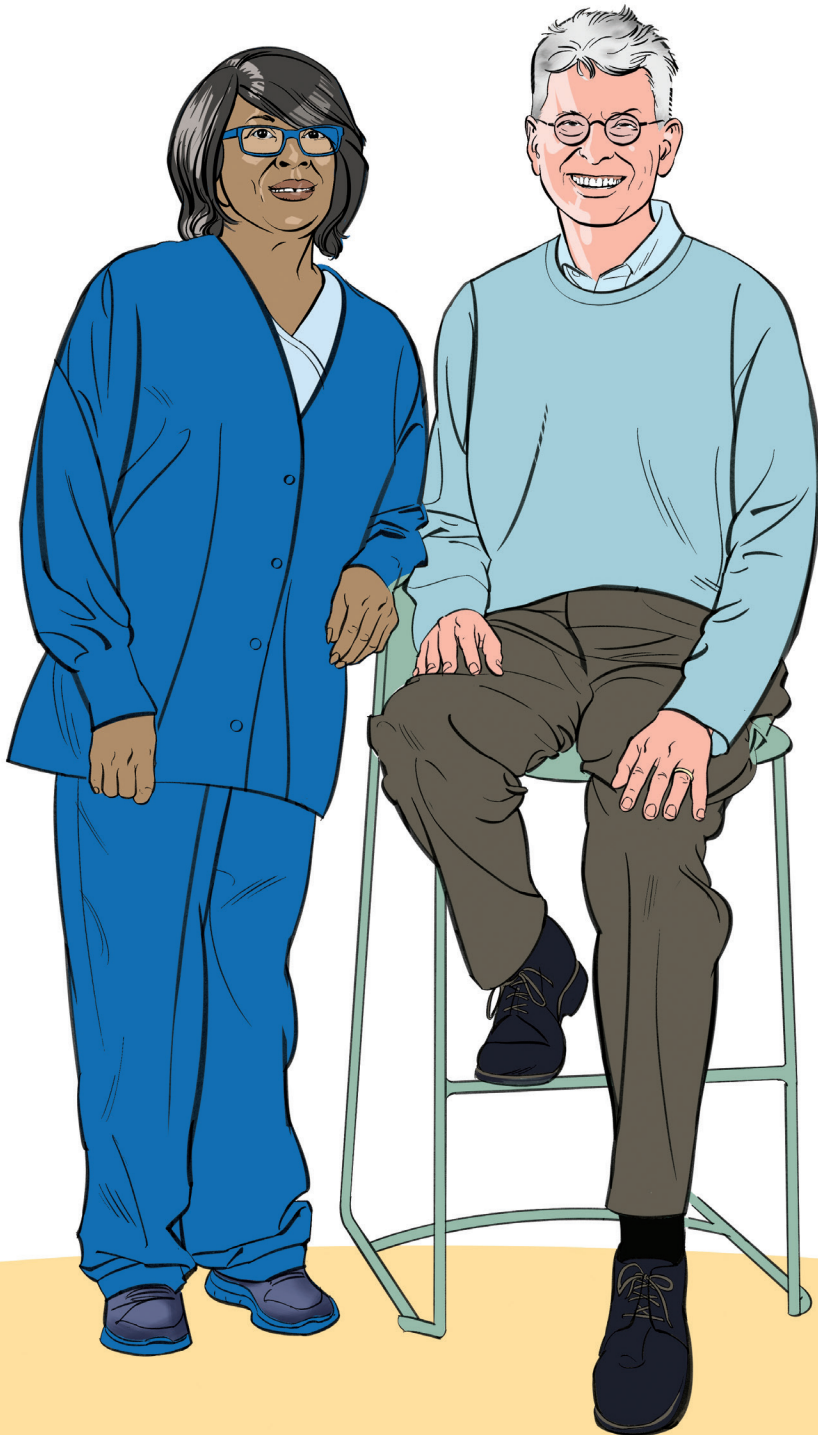
“Ultimately, we want to create new vaccines that protect soldiers and the general population from bioterror attacks,” says OMRF President Dr. Stephen Prescott. “We want to find ways to prevent lupus and rheumatoid arthritis before they ever start.”

Biomedical research, Prescott acknowledges, is a long game, one requiring consistent support from year to year, from decade to decade. “The goals we’re working toward are elusive. But if we achieve even some of them, the payoffs will be immense.”

**REPUBLICAN AND DEMOCRATIC
LEGISLATORS UNITE TO ANNOUNCE A PAIR
OF MAJOR FEDERAL GRANTS TO OMRF.**

OCTOBER-NOVEMBER

A HOMEGROWN SUCCESS STORY



When Novartis announced just before Thanksgiving that the U.S. Food and Drug Administration had approved the company's new drug to treat sickle cell disease, the press release didn't mention Oklahoma. But it should have.

That medication, known as Adakveo, is an Oklahoma product, developed by researchers at OMRF. Indeed, but for research done in the Sooner State over several decades, it wouldn't exist.

The story begins with Dr. Rodger McEver.

McEver came to Oklahoma in 1988, establishing a lab at OMRF. His research focused on white blood cells. Specifically, he studied a protein known as P-selectin, which mobilizes white blood cells to hunt down and stop invaders like bacteria in the body.

In the lab, McEver created an antibody that blocks P-selectin's functions. Research indicated that, in genetically engineered mice, P-selectin exacerbated the symptoms of sickle cell disease.

In sickle cell, red blood cells change from their customary round or oval shapes to the form of a crescent or "sickle." They stack up inside vessels, which eventually results in inflammation and excruciating pain. In some cases, long-term lack of oxygen can lead to organ damage, stroke or even death. The disease can affect people of all races, but it's most prevalent in those of African heritage. Health authorities estimate that 100,000 people in the U.S. suffer from sickle cell disease, which has no known cure.

As a physician, McEver had treated these patients. "Their suffering," he says, "is extreme."

To explore clinical applications in humans, McEver helped create a biotechnology company, Selexys. The company, which was based in Oklahoma City, fine-tuned the antibody, making an experimental drug that bound to human P-selectin and blocked its function.

An initial round of clinical testing found the drug to be safe and well tolerated by patients. Then, in a larger,

"DR. MCEVER USED HIS KNOWLEDGE TO MAKE LIFE BETTER FOR PEOPLE WHO SUFFER FROM SICKLE CELL DISEASE."

MARY LONG

WORK THAT BEGAN AT OMRF IN THE 1980S GIVES BIRTH TO A LIFE-CHANGING MEDICATION.

multi-center trial in the U.S., Jamaica and Brazil, the medication showed a marked reduction in pain crises when administered intravenously every 4 weeks in a clinical trial involving 198 sickle cell patients.

Based on those results, Novartis purchased Selexys and its drug. That medication is the first to offer patients with sickle cell targeted relief from pain crises. Current treatments, which include blood transfusions and pain medications, only alleviate symptoms as they arise.

“We know this drug can decrease the frequency of sickle cell pain crises in a significant and clinically meaningful way,” says Dr. Kenneth Ataga, who led the trial. The drug’s approval, he says, “is an important advancement for people living with this very difficult condition.”

One of those people has worked at OMRF for more than three decades. Her name is Mary Long, and she’s a member of the staff that cleans OMRF’s offices and labs, including McEver’s.

Since her childhood in rural Oklahoma, she’s been plagued by periodic bouts of excruciating pain. She can’t take pain-relieving medications like ibuprofen or acetaminophen because of stomach issues. Bedrest and a heating pad will help dull her symptoms, but they’re far from an adequate remedy.

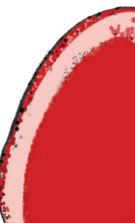
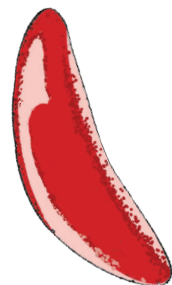
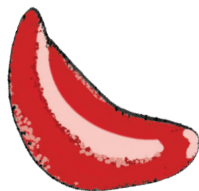
While she realizes that sickle cell may be inflicting long-term damage on her body, she is more concerned with the children she knows with the disease. “It just hurts me to know what they go through with this,” she says.

With the approval of the new medication, Long sees the potential to ease suffering and transform lives. “Dr. McEver used his knowledge to make life better for people who suffer from sickle cell disease. I really hope it does.”

For McEver, this would represent the ideal culmination of research that began more than three decades ago. “It’s the dream of every physician, and certainly every scientist, to do something that can make a difference for patients.”

SICKLE CELL DISEASE

IN SICKLE CELL DISEASE, MISSHAPEN RED BLOOD CELLS ACCUMULATE IN VESSELS, RESULTING IN INFLAMMATION AND DEBILITATING PAIN. OVER TIME, THIS CAN LEAD TO ORGAN FAILURE, STROKE AND DEATH. THE BLOOD DISEASE IS MOST PREVALENT IN THOSE OF AFRICAN HERITAGE, WHO MAKE UP 90 PERCENT OF ITS VICTIMS. HEALTH AUTHORITIES ESTIMATE THAT MORE THAN 1 MILLION WORLDWIDE SUFFER FROM THE ILLNESS, WHICH IS CAUSED BY A MUTATION IN A SINGLE GENE.



DECEMBER

ENDING THE YEAR

ON A HIGH NOTE

OMRF IS NAMED OKLAHOMA'S BEST PLACE TO WORK—AGAIN.

Scientific excellence requires a host of ingredients: dedication, attention to detail, resilience, innovation. Each of these, in turn, relies on having a staff that's both talented and committed to solving difficult problems.

In other words, says OMRF President Dr. Steve Prescott, "The key is people. They have to believe in the scientific mission of the institution. And they have to be excited about their jobs and want to be there every day."

Judging from the results of *The Oklahoman* newspaper's 2019 Best Places to Work competition, OMRF's staff is. Based on employee responses to a confidential online questionnaire, OMRF took the top spot in the large organization (350-plus workers) category.

An independent polling firm conducts the survey, which includes as many as 800 workplaces each year. It asks workers to rate their employers on a variety of factors that include job satisfaction, management quality, pay and benefits, and opportunity for growth. The firm uses the responses to rank employers from across Oklahoma.

OMRF received its award in December at a special reception honoring the state's top employers. The foundation has now won the top prize two of the past three years and ranked in the top 10 every year since the Best Places to Work contest began in 2013. At the 2019 event, *The Oklahoman* also presented OMRF

with a special award for receiving the highest marks among all organizations in all categories for the quality of its managers.

One of the factors that makes OMRF special, says Vice President of Human Resources Courtney Stevens Greenwood, is the diversity of the workforce. "We have employees here from almost 30 different countries," she says. "They bring fresh ideas and different approaches, and that really supercharges our organization."

Accounting clerk Nancy Flesher says OMRF's generous vacation and sick leave policies make a major difference in her life. "I'm a caregiver for my elderly mother, and OMRF has given me the flexibility to take the time I need to spend with her and still do my job. That's important to me."

"We strive to give every person at OMRF not only the resources and support to succeed, but also the freedom to achieve the work-life balance essential to long-term job satisfaction," says Greenwood.

For Dr. Chris Sansam, who joined OMRF from the Massachusetts Institute of Technology, it's the commitment to mission that really makes the foundation shine. "When I came to OMRF, I noticed right away that the people who work here—at all levels—really care about doing a good job. When you see that attitude around you day after day, it makes you want to do a better job yourself."



"WE WANT TO MAKE OMRF A PLACE THAT TALENTED PEOPLE CHOOSE TO CALL HOME FOR THEIR ENTIRE CAREERS."

DR. STEPHEN PRESCOTT

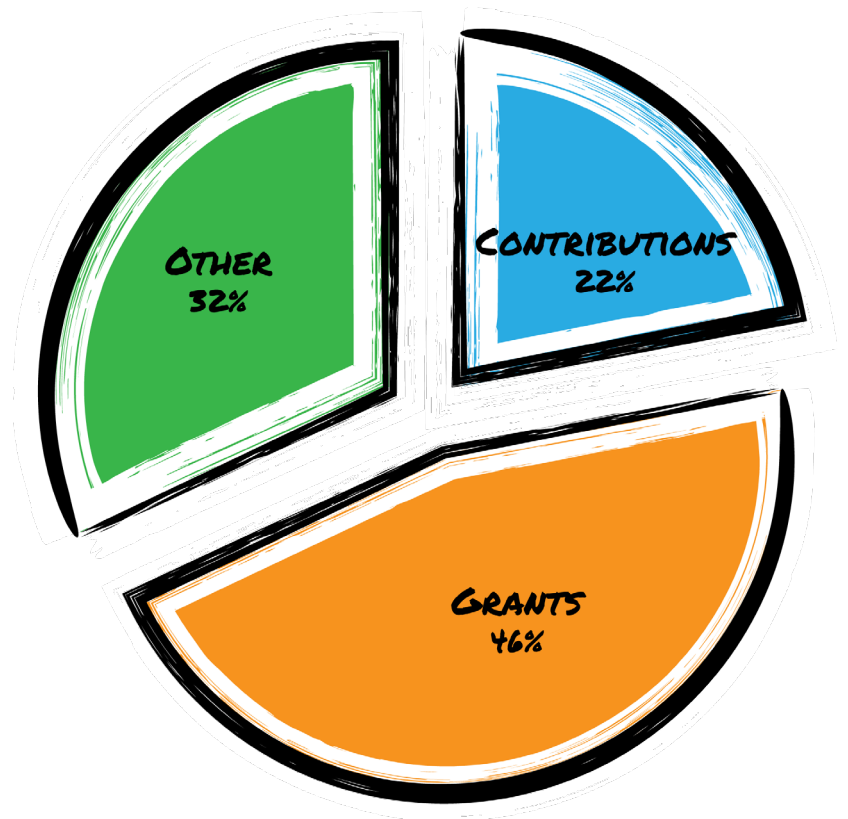




REVENUES

OTHER INCOME SOURCES

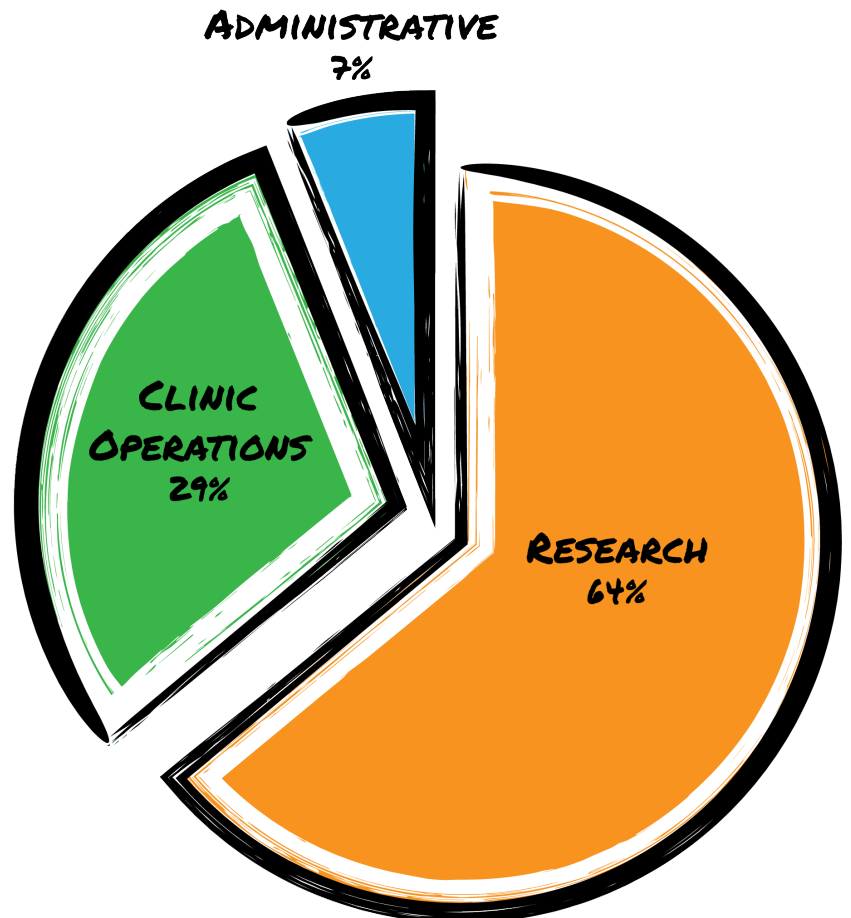
While gifts and competitive research grants provide the majority of OMRF's annual revenues, we count on supplementary funding streams to provide the additional \$29 million-plus needed to operate OMRF each year. Those other dollars come from a variety of sources: income from our clinic, royalty payments from licensing of intellectual property, and even mineral revenues from estate gifts we've received over the years. Having a balance of revenue streams is one of many factors that keeps the foundation financially secure.



EXPENSES

KEEPING COSTS LOW

When it comes to administration, less is more. For decades, OMRF's administrative costs have remained in single digits. And in 2019, that number held steady at just under 7 percent. It's OMRF's tradition to deliver administrative support in the most cost-efficient manner possible. That means more money for research.



FINANCIALS

| OKLAHOMA MEDICAL RESEARCH FOUNDATION Selected Financial Information - Operating Fund | | |
|---|----------------------|----------------------|
| | 2018-2019 | Prior year |
| OPERATING REVENUE: | | |
| Competitive research grants: | | |
| National Institutes of Health grants | \$ 29,443,800 | \$ 32,319,603 |
| Other competitive research grants | <u>11,858,628</u> | <u>11,350,300</u> |
| Total grants | 41,302,428 | 43,669,903 |
| Private contributions: | | |
| Income and gifts from trusts | 7,552,013 | 7,545,524 |
| Gifts and bequests | 1,408,812 | 157,605 |
| Contributions | 2,652,319 | 2,493,424 |
| Memorials | <u>626,762</u> | <u>611,831</u> |
| Total private contributions | 12,239,906 | 10,808,384 |
| Special event revenue: | | |
| Ticket sales and sponsorships | 604,935 | 708,204 |
| Less: direct costs of event | <u>(131,763)</u> | <u>(121,171)</u> |
| Net revenues from special events | 473,172 | 587,033 |
| Other revenue: | | |
| Clinical revenue, net of provisions for contractual and other adjustments | 21,399,860 | 19,970,530 |
| Interest and investment income | 890,398 | 806,595 |
| Mineral income | 1,596,136 | 1,305,293 |
| Rent | 374,255 | 363,468 |
| Royalties and licensing income | 1,684,970 | 1,434,726 |
| Loss on disposal of assets | 850,151 | 193,295 |
| Loss from uncollected receivables | (11,004) | (1,500) |
| Other | <u>2,594,311</u> | <u>2,578,669</u> |
| Total other revenue | 29,379,077 | 26,651,076 |
| Total revenue | \$ <u>83,394,583</u> | \$ <u>81,716,396</u> |
| Operating revenue from wills, pledges, and other restricted gifts recorded in prior years | <u>7,440,384</u> | <u>10,008,305</u> |
| Total operating revenue | \$ <u>90,834,967</u> | \$ <u>91,724,701</u> |
| OPERATING EXPENSES: | | |
| Program Services - Research | 51,472,969 | 53,628,852 |
| Program Services - Clinic operations | 23,870,464 | 21,697,357 |
| Support Services - General and administrative | 5,473,742 | 5,296,801 |
| Total operating expenses | <u>80,817,175</u> | <u>80,623,010</u> |
| Excess of revenues over expenses | \$ <u>10,017,792</u> | \$ <u>11,101,691</u> |

2019

HONOR ROLL

\$5,000,000+

The Chapman Trusts
Presbyterian Health Foundation

\$1,000,000-\$4,999,999

E.L. and Thelma Gaylord Foundation
Estate of Wesley Robert Mote

\$500,000-\$999,999

Mr. and Mrs. Greg S. Allen
The Chickasaw Nation
Estate of Kathryn Jo Foley
The J.E. and L.E. Mabee Foundation, Inc.
Sarkeys Foundation

\$100,000-\$499,999

Mary K. Chapman Foundation
Choctaw Nation of Oklahoma
Communities Foundation of Oklahoma/Gene
Rainbolt's 90th Birthday Event Proceeds
Estate of Robert D. Curley
Estate of John Howard Gardner
Huslig Family Trust
Inasmuch Foundation
Beth and Dale Matherly
Mr. and Mrs. Jacob Matherly/Matherly
Mechanical Contractors, Inc.
Kim and David E. Rainbolt
Robert Glenn Rapp Foundation
Mrs. Letha F. Smith

\$50,000-\$99,999

Anonymous
Estate of Roy Barton Carl, M.D.
Wilma Davis-McElmurry Trust
Clyde R. Evans Charitable Trust
Estate of Leota Mahautta McGuire
The Puterbaugh Foundation
Putnam City Schools Cancer Fund
Mr. Bill Stoller/Express Employment
Professionals
United Way of Central Oklahoma
Estate of Seba Whitehead
Estate of Paul Mertes Young

\$25,000-\$49,999

The Anschutz Foundation
Frontiers of Science Foundation of Oklahoma,
Inc.
Virginia and John Groendyke
William D. Hawley, M.D.

Leslie and Cliff Hudson/Hudson Family Fund -
OCCF

Estate of Bobby Gene Johnson
Mr. Christian K. Keesee/The Kirkpatrick Family
Fund

Jessie Dearing Kinley Testamentary Trust
Richard K. and Ruth S. Lane Memorial Trust
Oklahoma Grand Chapter Order of the Eastern
Star

OMRF Fleming Scholarship - OCCF
Madalynne L. Peel Foundation
Susan C. and Steve M. Prescott
Lt. Col. (Retired) and Mrs. Lloyd J. Ruttman
Mr. Danny Zelisko/DZP, Inc.

\$10,000-\$24,999

Estate of Gerald F. Abel
American Fidelity Assurance Company/American
Fidelity Foundation/InvesTrust
Anonymous
Mr. Donnie R. Ball
Harry and Louise Brown Foundation
Rebecca H. and James C. Buchanan III
H.A. and Mary K. Chapman Charitable Trust
Ann and Benny Clayton/Ben and Ann Clayton
Fund
Ms. Clarice Virginia Cook
Devon Energy Corporation
Ann-Clore and Walt Duncan/Duncan Oil
Properties, Inc.
Nancy P. and Robert S. Ellis, Sr.
Christy and Jim Everest
Zandra B. and Berton Fleenor
Mrs. Josephine W. Freede
Mrs. Jayne R. Hackworth
The Hammons Fund - The Dallas Foundation
Mr. Harvey Hampton/Dortha R. Dever Legacy
Fund - OCCF
The Hardesty Family Foundation, Inc.
Mr. Tim C. Headington
Andria and Paul Heafy/Wilshire Charitable
Foundation
G. Ed Hudgins Family Fund - OCCF
Mrs. Lou Kerr/The Kerr Foundation, Inc.
Gay E. and Ed Kirby
Sara F. and Jay Kyte
Mrs. Colleen F. Lage
Mr. Albert W. Lang
Mr. and Mrs. Larry Nichols
Linda and Don Nickles/Nickles Charitable Fund
OMRF General Research - OCCF

Kirschner Trusts - OCCF
Mr. Gene Rainbolt/Rainbolt Family Foundation
Ms. Susan Ross and D. Randolph Brown, Jr., M.D.
Katie and Tony Say/Clearwater Enterprises
Scaramucci Foundation
Mr. John R. Shofner
Betty and Charles Orlean Smith
Mrs. Jo Ann Smith
Estate of S. Graham Smith
Stillwater Senior High School
DiAnna and Steve Waldschmidt
Conna D. and Paul S. Woolsey
Barbara D. and Stephen F. Young/Oklahoma
Electrical Supply Company

\$5,000-\$9,999

Mr. and Mrs. Winford Akins
Mo and Richard T. Anderson
Anonymous
AT&T - Oklahoma
BancFirst
Mr. Mark L. Beffort
Linda and Lance Benham
Best Companies, Inc.
Bethany Public Schools
Black Mesa Investors
Mr. and Mrs. Robert F. Browne/Robert and Karen
Browne Family Fund - OCCF
Kim E. and Steve Bruno/United Mechanical, Inc.
Mr. and Mrs. Len B. Cason
Lucia and Ken C. Copeland
The Crawley Family Foundation
Mr. Stanley R. Crites
Mrs. Katherine L. Dickey
The Dobson Family Foundation
Karen W. and Tom L. Edgar
Susan and Carl E. Edwards
Embassy Suites
First National Bank of Oklahoma
Cynthia and Hal French
Beverly and Mark W. Funke
Ann F. and Robert H. Gilliland, Jr.
Mr. David W. Gorham/David W. Gorham Gift
Fund - OCCF
Carl E. Gungoll Exploration, LLC
D.A. and D.B. Harmon Memorial Fund - OCCF
Mr. Russ Harrison/BH Group Holdings, LLC
Myra L. and Gene Henry
Heritage Trust Company/Argent Financial Group
Chick and Yvonne Hilgenberg Charitable Trust
Lezlie and David Hudiburg/Hudiburg Auto Group

Mr. and Mrs. Ronnie K. Irani/Ronnie and
Shahnaaz Irani Fund - OCCF
Ann and Bill Johnstone
Jane F. and John A. Kenney
Judge Terence C. Kern
Sandy Kinney and Mike Sugg
Kathryn N. Klotsch - The Baptist Foundation
Barbara N. and Edward A. Krei
Mr. Robert M. Lackey
Mr. Whitfield Lee
Lana L. and Dave R. Lopez
Dr. Bill P. Loughridge
Carol A. and Dr. Joseph L. Lynch
Mrs. Letha McCray
Gigi and Rod McEver
LaDonna and Herman Meinders
Linda K. and Ron C. Merritt
Ms. Jonna L. Miller
Mr. and Mrs. Jim M. Morris
Mr. and Mrs. P.B. Odom III
OU Medicine, Inc.
Gayle and Richard H. Parry/Tom Johnson
Investment Management
Dr. Dominic M. Pedulla
Glenn W. Peel Foundation
The Perry Family Foundation, Inc.
Mrs. Whitney Rainbolt/Medallion Development
Company, LLC
Mr. Robert L. Rogers
Mr. Steve J. Rulewicz
Elizabeth and William Schraad, Jr./Schraad
Enterprises
Carolyn and Paul I. Schulte
The Jack O. Scroggins Charitable Foundation
Simmons Bank
Mrs. Erma D. Spann
Charles and Peggy Stephenson Family
Foundation
Mr. Ross O. Swimmer
Mr. Paul Thomson
Mrs. Norma F. Townsdin
Estate of Gary W. Wallace
Donna K. and Allyn G. Warkentin
Miss Judy Gayle Waters/Waters Charitable
Foundation
Barbra B. and Ken A. Weikel
Mr. and Mrs. G. Rainey Williams, Jr.
Mr. Dick Wright
Ms. M. Carol Wright
The Anne and Henry Zarrow Foundation

\$1,000-\$4,999

Mrs. Dorothy Jo Abbott
Miss Mary Evelyn Adams
Mr. Michael G. Adams
Leigh Ann and Paul W. Albers

Janice and D.C. Anderson
Ms. Leslie Anderson
Mr. and Mrs. E.R. Andrew
The Honorable and Mrs. Bill Anoatubby
Anonymous
APS FireCo Oklahoma City, LLC
Arcadia Downhole Services, Inc./Mr. Russell Voss
Falon and Todd Arms
Shelly and Gary Arnold
Mr. and Mrs. Stephen J. Arntz
Ascent Resources Management Services, LLC
Lou J. and Marshall Ault
Jimmie Lynn and Billye Austin Foundation
Ms. Ann E. Bachelor
Mr. and Mrs. Jesse Robert Ball
Bank of Oklahoma
Barefoot Music, Inc.
Ms. Betsy L. Barnes
Mr. J. Edward Barth
Ms. Jearl Bartlett
Ann and Larry Bartlett
Mrs. Kay Bass
Mrs. Beverly J. Beal
Mr. and Mrs. Richard A. Beale
Dr. and Mrs. William Lee Beasley
Beau's Wine Bin and Spirit Shoppe
Michael J. Beckstead, Ph.D.
Mr. and Mrs. Vernon Belcher
Sharon J. Bell and Gregory A. Gray
Sheryl and Bruce T. Benbrook
Benham Design, LLC, a Haskell Company
Louise G. and Clay I. Bennett
Marilyn R. and Royce H. Bentley
Vickie and David L. Beyer
Carol and Richard Alexander Birchall
Dr. Paul J. Birckbichler
Ms. Caroline E. Blakey
Blue Cross and Blue Shield of Oklahoma
Suzanne and Bruce Bockus
Mr. Bart Boeckman
Mr. Brock Boeckman
Ms. Brooke L. Boeckman
Mr. Bryce A. Boeckman
Cheryl L. and Chris J. Boeckman
Sherry and L. Bruce Boehs
Mr. and Mrs. Tony Boghetich
Brooke and Kurt Bollenbach
Mr. David Bolt
Mrs. Zandra Boucher
Mr. Michael L. Bourland
Mr. and Mrs. John L. Bowen
Devota F. and Jim R. Bowers
Jana and Jon Bowers
Margaret P. and Del N. Boyles
Mr. Hugh Branscum
Barbara and Rick Braught

Mrs. Karen Braver
Ms. Doris R. Brehm
Megan and Vincent M. Brigham
Mr. Neil M. Briix
Jo D. and Gene Brown
Kathleen and Lt. Col. (Retired) Rayford K. Brown
Ms. Sandra Cole Brown
Regena A. and Brownie M. Browne
Mr. Mike D. Brunsman
Mrs. Marjorie L. Bryan
Ms. Regina A. Buckley
D. Ellen and Richard C. Burgess
Deane W. and John R. Burnett
Mr. G. Neil Cagle
Michelle M. and William Calvo
Dr. Pat A. Capra
Roy Barton Carl, M.D.
Mrs. Ann O. Carlson
CarMichael Foundation
Mrs. Norma Sue Carpenter
Mr. Gregory D. Carter
Casady High School Class of 1969
Mr. Jeffrey F. Caughron
Mr. and Mrs. Mike A. Cawley
Central National Bank of Poteau
Donna F. and Michael A. Cervantes
Stefanie and John Chace
Eliza Chakravarty, M.D.
Janice and Hiram H. Champlin
Mr. and Mrs. Harry E. Chancellor
Ms. Victoria Palmer Chase
Carolyn D. and Bill R. Chatham
Mrs. Jacqueline M. Cheatham
Pamela H. and Michael A. Chozen
Mrs. Janice Christol
Debbie L. and Mickey L. Clagg
Dr. Charles R. Clark/Clark Family Gifting Trust
B.C. Clark Jewelers
Mr. Sidney R. Clarke III
Mr. and Mrs. John J. Coates, Jr.
Mrs. Mary E. Coates
Martha and Rick M. Coe
Ms. Kathryn L. Coffman
Lisa and Michael A. Coffman
Ms. Teresa Coffman
J.L. and C.N. Coffman Foundation Trust
Susan and Don V. Cogman/Cogman Family Fund
Mr. Adam B. Cohen
Becky and J. Markham Collins
Michele A. and Larry S. Compton
Connelly Paving Company
ConocoPhillips
Mrs. Teresa L. Cooper
Ms. Sharon Copeland
Nichole and Steven Copeland
Mr. George Corkins

Gayle and Ted L. Cox
Mrs. Debbie J. Craine
Ms. Nancy R. Cravens
Carol and Bill H. Crawford
Ms. Jennifer M. Criley
Russell and Hazel Crooch Endowment Fund -
United Methodist Foundation
Crowe and Dunlevy/Crowe and Dunlevy
Foundation
Dr. Camisa Stewart and Mr. Lester R. Cummings
Mr. and Mrs. Dean A. Cunningham
Alice R. and Don W. Dahlgren
Mr. and Mrs. Louis M. Dakil
Mr. Bruce E. Dale
Patricia P. and Douglas Dale
Phyllis and Tommy L. Daughtrey
Mrs. Connie S. Davis
Drs. Susannah Rankin and Dean S. Dawson
Ms. Lisa F. Day
Ms. Rebecca A. Day
Rita J. and Thomas A. Dearmon
Mrs. Myra A. Decker
Ms. Amy Dedeke
Mrs. Gayle A. Dekker
Mr. and Mrs. Mark A. Dick
Paula V. and Lanny J. Dickmann, Jr.
Chieko S. and Jack E. Dieken
Cathy A. and Jed E. Dillingham
Mr. and Mrs. Dan L. Dillingham
Lisa and Chad Dillingham
Mr. David Dillon
Mr. W.J. Dillon III
Janice A. and Richard A. Dobbs
Mrs. Marilyn A. Doty
Susan P. and Ramsey W. Drake II
Drake Gungoll Foundation
Margaret G. and Nicholas V. Duncan
J.E. Dunn Construction Company
Bill and Barbara Durrett
Mr. Tommy R. Dyer, Jr.
The Honorable Claire V. Eagan and Mr. Anthony
J. Loretto, Jr.
Edmond Duplicate Bridge Club
Mr. and Mrs. Pete Eischen
Mr. and Mrs. Lloyd D. Eisenhour
Mr. and Mrs. I.W. Ellard
Ms. Louise S. Elliott
Betty C. and Larry J. Ens
Lura S. and Robert S. Fabian
Cyndi D. and Tom W. Fagan
Farmers and Merchants National Bank
Mr. and Mrs. Ken Ferguson
Mrs. Marilyn R. Filonow
Mr. and Mrs. Scott H. Filstrup
First United
Mr. John A. Fischer

Malinda Berry and Dick S. Fischer
Mr. and Mrs. Andrew Flesher/Flesher Family
Fund
Mr. Doug Floyd
Marlene G. and Robert A. Floyd
Mr. Timothy E. Foley
Mary Jo and Mark A. Fortuna
Foundation Management, Inc.
Jeanne and Ed Fowler
Frazer Bank
Mr. Willard M. Freeman
Deborah K. and Richard H. Friant
Mr. John Frick
Mrs. Lena J. Frost
Amy and Patrick M. Gaffney
Jane A. Jayroe and Gerald L. Gamble
Mrs. Nina P. Gaugler
Dr. Xin Geng
James S. Gerber, M.D.
Mr. and Mrs. Philip Gibson
Mr. and Mrs. Larry A. Gilbert
Mr. Peter D. Gill
Ms. Lisa Gipson
Lisa K. and Gregory F. Gisler
GJW Associates, LLC
Robin and Mark Gladstein/Robin's Charities -
Greater Houston Community Foundation
Nancy V. and Jerry N. Glasgow
Ms. Carol A. Glass
Mr. John Mark Goetz
Goldman Sachs MBD Legal
Mrs. Susan A. Gonzalez
Ms. Tina Goodson
Mrs. Sharon K. Gowdy
Danae and Evan Grace
Mr. and Mrs. Tom R. Gray III
Randi D. and Gerald P. Green
Mr. and Mrs. John Ray Green
Mr. and Mrs. Robert I. Greenberg
Mrs. Julia A. Greenlee
Courtney D. and Owen Greenwood
Shellie and Don Greiner/Don and Chellie Greiner
Fund
Drs. Courtney and Tim M. Griffin
Mr. John W. Griffin/Griffin Holdings, Inc.
Betty and Steve Guest
Mary Lou and Bill A. Hadwiger
Rozella and Jim Hadwiger
Alice C. and Dave A. Hager
Jacqueline O. and Roger V. Haglund
Mr. Ramez M. Hakim
William H. Hall, M.D.
Ernestine L. and Pat Hallaren
Mrs. Pauline G. Hamilton
Mrs. Kirk Hammons
Mr. Bret D. Hampton

Ms. Arthenia L. Haney
Ann and Burns Hargis
Mrs. Beverly A. Harkness
Ms. Ollis B. Harrison
Mrs. Shirley A. Harrison
Mrs. Maxine B. Hartman
Mr. Ron F. Hartman
Hartzog Conger and Cason, LLP
Erin and Tim Hassen
Ms. Judy J. Hatfield
Dawna and Marc Hatton
Mr. and Mrs. Rick L. Hauschild, Jr.
Nancy and John B. Hawkins
Shari D. and Larry J. Hawkins
Mrs. Bonnie B. Hefner
Heiman Family Foundation
Mrs. Virginia F. Hellwege
Mary and Frank X. Henke III
Kim and Brad Henry
Mrs. Lois C. Herndon
Bette Jo and Frank D. Hill
Ms. Jo Ann Hintergardt
Mr. Memphis S. Hixson
Ms. Joan L. Murray-Hogan
Mr. and Mrs. Randy Hogan/Hogan Property
Company, LLC
HoganTaylor, LLP
The Honorable and Mrs. Jerome A. Holmes
Karin and David Holsted
Mr. and Mrs. Steve B. Holton
Catherine W. and Jerry T. Hoopert
Chris and Todd Hopeman
Mrs. Donna Mae Hopper
Mrs. Virginia C. Horne
Nora A. and Kenneth R. House
Vicki E. and Carl S. Hutto
Hyde and Company CPAs, PC
Idabel National Bank
Cecil R. and Laura Ingram
Ms. Jolene R. Ingram
Interbank
Mr. James Wesley Jack
Mrs. Florene Jacobs
Judith A. James Wood, M.D., Ph.D., and Glen
Aden Wood
Dr. and Mrs. Brett Jameson
Loretta and Jerry L. Janzen
Deborah and Larry Jeffrey
Teresa K. and Gerald H. Jobe
Mr. Carlos E. Johnson
Mr. and Mrs. Charles B. Johnson
Kathy and Jim C. Johnson
Mrs. Marcia H. Johnson
Mr. Russel C. Johnson
Ms. Valerie Johnson
Lynette K. and Clay G. Jones

Susan A. and John C. Jones
Fred Jones Family Foundation
Ms. Juliet H. Jones-Moss
Susan K. and Greg Kannady
Keeler-Matthews Charitable Foundation, Inc.
Mrs. Eileen S. Kelle
Dr. and Mrs. Mike Kelly
Ms. Pauline G. Kempton
Rosemary E. Kerber, Ph.D.
Dr. and Mrs. Bob Kidd
Tracy A. and John J. Kidwell
Melanie and Paul W. Kincade
Debra and Gary Kinslow
Mr. Larry Kinslow
Karen M. and Ron D. Kirkpatrick
Kirkpatrick Bank
Pam and Jim Klepper
Ms. Becky F. Knight
Lariat Creek, LLC
Ms. Joanna L. Latting
Mr. and Mrs. Raymond C. Lauchner
Ms. Virginia L. Lawrenz
Mrs. Patsy R. Lawyer
Mrs. Mary Grace Lebeda
Mrs. Catherine Lebsack
Jenny K. and Chris N. Lee
Mr. Josh Leffler/Lefco Energy, LLC
Martha A. and Gary I. Leff
Mr. and Mrs. Rickie LeMonnier
Mrs. Sarah Lenz
Mr. Herbert M. Leonard, Jr.
Ms. Kim Leonard
Linda and Robert C. Leshner
Elaine and Harrison Levy
Zhimin Liang and Lijun Xia, M.D., Ph.D.
Mr. and Mrs. T.G. Lindsey
Mr. Dan Little
Ms. Paula Janell Loesch
Mrs. Lynn V. Lofton
Loretta M. and John Calvin Long
Karen L. and Donny J. Longest
Mr. and Mrs. Andy Longoria
Ms. Sandra G. Lookabaugh
Elizabeth and Dean Loshbaugh
Judy and Tom E. Love/Love Family Affiliated
Fund - OCCF
Ms. Daralyn Loveless
Ms. Barbara L. Low
Ms. Dian Ludwig
Mr. Randy J. Ludwig
Drs. Cristina and Florea Lupu
Mrs. Marylou Mahaffey
Vishal Maheshwari
Paul Mainard Family Trust
Mr. Warren D. Majors
Joan L. and Michael J. Maly

Amy and John Manfredo
Manhattan Construction Company
Ms. Naomi F. Martin
Ms. Susan L. Martin
Ms. Kym Freeman Mason/KM Freeman, LLC
Masonic Lodge #367 AF and AM
Ms. Charlotte M. Masters
Ms. Marcel A. Maupin
Mr. and Mrs. Richard L. Maxon
McAfee and Taft
Mary T. and Arthur E. McAnulty
Caroline and Billy F. McCarley
Helen M. and Joe C. McFadden
Mary O. and Mike A. McGraw
Ms. Vickie J. McIlvoy
Janis S. and Tony R. McKaig
Linda J. and Joe A. McKenzie
Liz and Tim McLaughlin/McLaughlin Fund - CFO
Kathy and Scott F. McLaughlin
Mr. and Mrs. Richard L. McLennan
Mr. Frank A. McPherson
Susan E. and Scott A. Meacham
Linda and Randy N. Mecklenburg
Debbie and Joel Meier
Mr. Frank W. Merrick, Sr.
Katie and Will Merrick
The Merrick Foundation
Betty L. and Bobby Merritt
Dr. and Mrs. Joseph F. Messenbaugh III
Metropolitan Health Care Self Insured Group/
Safety National
Mrs. Stephanie L. Metts
Cindy Meyer and Dale Hanchey
Midtown Renaissance
Ms. Judy A. Mikkelson
Mary and Walter C. Mikkelson II
Miles Associates Architects
Aimee E. and Kevin W. Miller
Mr. Burr Millsap
Mr. James L. Monk
Mrs. Emma Rose Moore
Kevin L. Moore, M.D.
Mrs. Sarah F. Moore
Suzy and Chip Morgan
Jill and David Morgan
Margaret H. and Larry E. Morris
Mr. J. Gary Mourton
Annette R. and Tom Mrazik
Mr. and Mrs. James A. Mueller
Lisa L. and Greg M. Mullen
Ms. Jon Evah Murray
Mrs. Margene Naberhaus
Mr. Manu S. Nair
Swapan K. Nath, Ph.D.
Cena E. and Mark S. Nault
NBC Oklahoma

Nancy A. and Kenneth A. Nelson
Ms. Sharon F. Neuwald
Alysa I. and Charles C. Newcomb
Lydia D. Nightingale, M.D.
Mrs. Mary D. Nigro/Nigro Charitable Fund
Dr. Linda Barton Nimmo
Tina L. and Kevin Nimz
Mr. Lloyd Noble II
Sandra N. and Dennis G. Noble
Mr. David Nordyke
Ms. Jane Ann Norris
OMRF Research Fund - OCCF
Mr. David H. O'Daniell
OGE Energy Corporation
Oklahoma Association of Mothers Clubs
Oklahoma State University Foundation
Marilyn A. and John S. Oldfield, Jr.
Mr. Rudy Oliver, Jr.
Judy and David Onken
Paulette K. and Don R. Owens
Mr. and Mrs. Leslie D. Page
Mr. and Mrs. Jay C. Parham
Mr. and Mrs. Steve Parkhurst
Janet S. and Larry Patterson
Mr. William G. Paul
Mr. and Mrs. Bond Payne
Mr. Merlyn N. Pearson
Peck Family Charitable Foundation, Inc.
Barbara J. and Bob W. Penick
Gailynn and John W. Phelps
Ms. Sue P. Phillips
Ms. Wendy Y. Pitt
Gerry R. and Dick Pittenger
Kendra S. and Scott M. Plafker
Dr. and Mrs. Barry L. Pollard
Mrs. Marcia J. Powell
Mr. and Mrs. Paul E. Quintle
Donna and Bill Ramsey/Ramsey Real Estate
Mrs. Patsy R. Ray
Susan and Steve Raybourn
Mr. George A. Razook, Jr.
Marisa and George J. Records, Jr.
Mr. George J. Records
Ms. Martha Ellen Records
Mr. Zane K. Rector
Ms. Andrea Reed
Catherine and Jonathan Renner
Penny and Dee A. Replogle, Jr.
Carol A. and Mike L. Rhodes
Avery and Corbyn Rhodes
Mr. Barry T. Rice
Mr. Gordon S. Richards, Jr.
Riggs, Abney, Neal, Turpen, Orbison and Lewis
Willa G. and Duane Ring
Mr. Richard D. Roberts/RBG, Inc.
Loydel and Freddy James Robertson

Caroline D. and Wilbert J. Robertson
Mr. and Mrs. Carl A. Robinson
Mr. Don L. Roby
Ms. Beverly Rodgers
Rogers and Bell
Lisa D. and Randy Romines
Mrs. Joyce A. Roodman
Mr. and Mrs. Patrick Turner Rooney
Ms. Deborah L. Rose
Sharon and Gary Roth
Mr. and Mrs. Ryan J. Rother
Lynne and Bob Rowley
RSM US, LLP
Mrs. June I. Rutherford
Ms. Elizabeth Ryan and Mr. Mike W. Muncy
Ms. Kathryn R. Ryan
Mrs. Dorothy F. Sales
Karen and Mike S. Samis/The Macklanburg-
Hulsey Foundation
Chelin H. and Gregg M. Satherlie
Dr. John H. Saxon
Ms. Edie A. Schneeberger
Ms. Mary S. Schneeberger
Dr. Clyde H. Schoolfield, Jr.
Mrs. Patricia A. Schuessler
Ms. Carol Jo Schultz
Ms. Carol E. Sechrist
Ms. Sheryl Colton and Mr. Robert Evan Shaff
Ms. Pamela Sharp
Ms. Judy Shaw
Rebecca A. and Kirby G. Shelton
Mrs. Surekha Sheorey
Mr. David B. Shepherd
Tenna M. and Greg S. Shepherd
Mrs. Marilyn K. Sheppard
Ms. Gay L. Shick
Carol A. and Kim W. Shoemake
Mr. Richard L. Sias
Ms. Michelle Silva
Ms. Janet Welsh Simmons
Barbara and Roger N. Simons
Vicki and Ernest Simpson
Mr. and Mrs. R.L. Simpson III
Ms. Sandra M. Simpson
Mr. and Mrs. Richard M. Singer
Dr. and Mrs. Joseph L. Skinner
Linda and Steve B. Slawson
Mrs. Etta Jean Smith
Mr. John F. Smith
Geraldine and Dr. Robert A. Smith
Smith and Pickel Construction, Inc.
Dr. and Mrs. Blake J. Sonobe
Southwestern Group of Companies
Kate P. and John S. Spaid
Mrs. Mary P. Ransom Spence
SRBBL, LLC

Sathish Srinivasan, Ph.D.
SSM Health
Mr. Jacob Stangl
Janet S. and Danny L. Stansbury
Bernice and Kenneth Steele
Steven Giles Clothing
Becky L. and David Stinson
The Stock Exchange Bank
Mrs. Phyllis Jarnagin Stough
Marjorie S. and Vernon H. Stowe
Jeleta and Coy Sullivan
John and Kip Suter
Mr. and Mrs. Mark S. Svoboda
Becky and Barry Switzer
Mr. Matthew Taylor
Lisa R. and Tim W. Teske
Ms. Lawanda Thetford
Mr. Alvin L. Thomas, Jr.
Jackie and Robert C. Tilghman
Ms. Linda Tivis
Janet S. and Sammy S. Todd
Laura K. and William J. Toellner
Beth J. and Rheal A. Towner
Jackie F. and Dennis Trepagnier
Maureen and Steve E. Trotter
The Trust Company of Oklahoma
Julie and Jeremy Tubb
Judy and Ron S. Turner
Susan and Michael C. Turpen
Bonnie J. and Mickey M. Vanderwork/Mickey
Vanderwork Farm
Ms. Margaret A. Vater
Ms. Martha Vaughan
Amber and Brandt Vawter
Veterans of Foreign Wars Department of
Oklahoma, Inc.
Penny and Russell Voss
Peggy and Jackie G. Waldo
Marsha and John N. Waldo
Mr. and Mrs. Lee Walther
Traci B. and Gregory F. Walton
Nancy and Chi-Sun Wang
Mr. and Mrs. Randal Wanzer
Mr. Tom L. Ward
Mrs. Margie Ware
Mr. Mark Warner
Mr. James J. Wasson
Dr. Gregory L. Watkins
Maril J. Weber
Ms. Margaret A. Weddle
Mr. and Mrs. Greg G. Wedel
Meredith and Bobby Wegener
Carmalieta and Dan Wells
Charity A. and S. Aaron Wells
Leslie A. Wells and Scott Davidson
Rebecca A. and Steve E. Wells

Weokie Credit Union Foundation
Ms. Mary Lynn West
Mrs. Judy D. Whipple
Mr. and Mrs. Robert F. White
Mr. Royce H. Wieden
Renate W. and Chuck E. Wiggin
Nona E. and Jerry L. Wilhm
Ms. Judy Williams
The Williams Companies, Inc.
Williams, Box, Forshee & Bullard, PC
Mr. Jimmy H. Williamson
Mr. and Mrs. Daniel R. Willits
Gara and Russ W. Wilsie
Dr. Peter A. Winn
Jan K. and Jim C. Wittrock
Ms. Toni N. Wizenberg
Wolzinger Family Foundation
Ms. Elaine B. Wood
Ms. Erlene S. Wood
Mr. James Wood
Mr. and Mrs. W. Paul Woody
Ms. Esther M. Wymer
Dr. William B. Wynn
Sarah E. and Paul E. Yauk
Mrs. Nancy P. Yoch
Jeanette I. and Kent M. Young
Ms. Linda R. Young
Fern and Robert Zajic
Ms. Ginger S. Zimmerman
Dr. David E. Zuech
Mrs. Betty J. ZumMallen

~~500-999~~

Becky and Randy D. Adams
Carolyn A. and Richard M. Adkins
Dr. Cami D. Agan
Caroline C. and Tyler Allen
Anonymous
Paul D. Austin Family Foundation
Megan and Joel Baggett
Ms. Lynn M. Baldwin
Mrs. Linda Barton
Mrs. H. Jean Bayles
Rebecca S. and Lowry Blakeburn II
Mr. and Mrs. Jack P.F. Bowles
Barbara and Fred W. (Pete) Brown
Debbie and Monte Brown
Mary S. and Gerald W. Brown
Pat H. and David J. Brown
Mr. Jay A. Burns
Mr. William M. Cameron
Ginny and Peter Carl
Mr. and Mrs. C. Michael Carolina
Mr. Brandon S. Carpenter
Mrs. Judith P. Carr/Judith Carr Fund - OCCF
Mr. and Mrs. Lynn Carson

Ruth and Phil G. Carson
Ms. Fredonna Carol Carthen
Mrs. Barbara Cavett
Ms. Celin Chacko
Phyllis and Gerald Church
Mr. Mike G. Clayton
Marilyn and Jim Conner/Todd Family Charitable
Foundation
Mr. Richard D. Craig
Cross Family Benefit
Jayne and Mark Crumpley
Mr. and Mrs. John Daugherty, Jr.
Tricia and Mike W. Deason
Brenda K. and Jerry DeLozier
Mr. and Mrs. Clarence C. Drumeller
Mr. and Mrs. Jim Eaton
El Reno High School Class of 1953
Mr. Richard Elliott
Mrs. Nancy Jo Ellis
J.H. Ellwood & Associates, Inc.
Elm Flat Christian Church
Evans and Davis, PLLC
Mr. and Mrs. Mark E. Farrar
Mr. Larry Fenity
The First Bank of Okarche
Ms. Janet W. Foster
Estella M. and Patrick V. Franken
Joyce W. and Tom R. Frazier
Dorothea French Fund - United Methodist
Foundation
Ms. Peggy Geib
Mr. Carl Gibson
Margaret C. and James N. Gibson
Mr. and Mrs. Olin Gilbert
Ms. Courtney S. Glazer
Sue and Michael Goodnight
Nancy L. and Barry Grove
Mrs. Martha C. Grubb
Guthery Family Investments
Ms. Julia Carrington Hall/Carrington Hall Fund
- OCCF
Mr. John E. Hart
Ms. Susan Henderson
Marisha and Gerry L. Hendrick
Mr. and Mrs. Donnie Holloway
Jan C. and Don E. Hubbard
Mrs. Lynn A. Hughes
Dr. and Mrs. Shane Hull
Mr. and Mrs. Gregory J. Husen
Mr. Robert N. Jackson
Mr. Ronald G. Jacob
Drs. Cathy L. and John H. Jameson
Bonnie and Robert Jefferis
Mr. and Mrs. Donald E. Jeffers
Mr. and Mrs. William R. Johnson
Mr. Russell W. Jones

Ms. Laura M. King
Anna Claire and Howard Kuchta
Mr. Steven K. Lance
Mrs. Kimberly A. Lauer
Ms. Dorothy A. Lawson
Erna and Lowell E. Leach
Mrs. Donna D. Logan
Mrs. Marleta London
Ms. Betty R. Love
Karen L. and Rob P. Luke
Mrs. Mindy Mahaney
Mr. Craig A. Mahl
Mr. and Mrs. Robert C. Margo
Miss Beverly A. Martin
Mr. and Mrs. Mel L. Martin
Ms. Paula S. Matlock
Mr. and Mrs. Jack De McCarty
Mr. Robert E. McClain
Mrs. Mollie McCurdy
Ms. K. Kim McHugh
Stephanie and James Mode
Ms. Bonnie Monarch
Kay S. and James E. Moore
Ms. Elaine M. Nighswonger
Ms. Della Ruth Nuzum
Mr. Jim D. Oliver
OMRF Teen Leaders In Philanthropy Class
of 2018
Joanne A. and Ken D. Parrott
Mrs. June H. Parry
Billy and John Mark Paschal
Mr. and Mrs. Roy G. Paston
SuzAnne K. and Rob F. Patterson
Pawnee County Feed
Ms. Nancy H. Pennell
Mrs. Sandra J. Peyton
Mr. Daniel W. Phelps
Lisa K. and John P. Pickens
Mrs. Jean E. Pilcher
Mr. and Mrs. Don W. Pitman
Marcia L. and Chris N. Pixler
Ms. Laura L. Pompa
Wanda O. and John R. Potts
Powers Family Property, LLC
Mrs. Mona Z. Preuss
Mr. Jim Quillen
Dr. and Mrs. Steve A. Ramsey
Kathryn M. and Phillip E. Rattan
Mr. Brian J. Rawls
Mr. and Mrs. Joe M. Rector IV
Jana and Lee Reynolds
Mrs. Margaret C. Reynolds
Mrs. Sally T. Riley
Mrs. Stace Robbins
Mr. Craig Roddy
Mrs. E. Joan Rollins

Mr. and Mrs. Don Rother
Mrs. Letha Jones Schantz
Ms. Gail E. Schmidt
Mr. and Mrs. Francis J. Schmitz
Mr. Dale Schoeling
Mr. and Mrs. Fred P. Schonwald, Jr./Pat and Fred
Schonwald, Jr. Gift Fund - OCCF
Mrs. Christina A. Schwarz
Jane R. and Milton P. Seagraves
Drs. Afshan and Arif Shakir
Ms. Sandy Shaw
Nancy D. and Jim M. Simmons
Julie Y. and Myron D. Simons
Dorothy B. and Gerald T. Skinner
Mr. R. Emery Smiser
Patti and Mark E. Southard
Mr. Neil Spaeth
Mr. Jay H. Stafford
Ms. Leigh Standingbear
Mary E. and Anthony F. Stangl
Mr. and Mrs. Jon Stockton
Mr. and Mrs. Ross M. Stuntz
Miss Joy J. Sullivan
Mr. and Mrs. Joe Talkington
Janet L. and Charles L. Talley
Mrs. Pebble F. Terrell
Betty L. and Arthur H. Thompson
Mr. and Mrs. Michael F. Thompson
Mrs. Cynthia A. Tomlin
Joyce F. and Lynn Treece
Tami and Brad Vaughan
Mitzi and Philip Walker
Mrs. Judy F. Walters
The Tom L. Ward Family Foundation
Shelli K. and Craig S. Wasson
Vena Mae West Family Trust
Ms. Wanda J. White
Margaret B. and John L. Williford
Mr. W.R. Wilson
Mrs. Anne W. Workman
Ms. Donna J. Wyskup
Mr. James G. Young/Kathleen Lister Fund - OCCF
Mr. Ed R. Zschiesche

UNDER \$500

Abbott Laboratories
Carol and Ed Abel
Abell HCE Club
Ms. Teresa J. Aberle
Elaine and Clayton F. Abernathy
Mr. and Mrs. John W. Abernathy
Karen and John T. Abney
Ms. Cecilia E. Abrams
Ms. Ann Ackerman
Carla A. and Barton Adair
Alice and Charlie Adams
Mrs. Fern Adams
Kathy and Gary Adams
Mr. and Mrs. Joe B. Adams
Albert Lee and Nancy Adams
Joy L. and Clint L. Adler
African Christian Fellowship Tulsa
Mr. Michael X. Agan
Mr. Robert G. Aguilar
Mrs. Patti H. Ahrberg
AJW-147
Brenda K. and Don Akins
Betsy A. and Stan E. Albury
Mrs. Anna Mae Alexander
Mechelle and Danny Alexander
Mrs. Isabel H. Alexander
Alfalfa Electric Cooperative Inc.
Mr. Robert L. Allee
Mrs. Barbara Ann Allen
Mr. Buddy R. Allen
Mr. and Mrs. Freddie K. Allen
Mr. Joe B. Allen
Susan and Joe B. Allen III
Evelyn F. and John R. Allen
Kim and David Allen
Mr. Leland Allen
Mrs. Margaret B. Allen
Ms. Martha Allen
Ms. Susan G. Allen
Mrs. Tommye J. Allen
Patricia K. and Gary C. Allerheiligen
Ms. Patricia Ann Shirley Allford
Ms. Nancy Almaraz
Alpha Mother's Club
Lisa J. and Tony Alwert
AmazonSmile
Ms. Pat Ambler
Mrs. Ellaine R. Amend
American Welding Supply Inc.
Mr. L. Lyeal Amos
Mr. and Mrs. Jack F. Amyx
Amy B. and Marty Andersen
Anne and Tom Anderson
Carol D. and Bill J. Anderson
Jackie and Gary E. Anderson
Mr. and Mrs. Harlan L. Anderson
Susan E. Bearden and Joe K. Anderson
Mrs. Juliene Anderson
Mr. and Mrs. Ellis Anderson
Ms. Mary Lee Anderson

Melinda and Shane Anderson
Debbie and Steve Anderson
Mr. Winston Anderson
Miss Una S. Angeli
Ms. Naomi L. Anson
Ms. Annette Farley Anthony
Paula B. and Bobby D. Anthony, MD
Nancy J. and Cary D. Anthony
Lynda L. and Jimmie K. Archey
Mr. Doyle W. Argo
Sherri and Tom Arms
Mrs. Beth Arnhart
Mr. and Mrs. Eugene F. (Gene) Arnold
Mr. Ross Arnold
Mrs. Lola Jean Ashford
Mrs. Martha L. Ashworth
Nguyen T. and Carl E. Aslaksen
Dr. Dean A. Atkinson
Mr. and Mrs. Larry D. Auld
Dr. and Mrs. Jack B. Austerman
Mrs. Betty F. Austin
Ms. Alice Azzun
Ms. Gladys Azzun
Christy and Bruce Baade
Ms. Laretta M. Back
Velma and Bill H. Bacon
Mr. and Mrs. Cary Baetz
Peggy A. and Bill Bailey
Deanna and Dick F. Bailey
Ms. Lori Bailey
Mrs. Shirley M. Bailey
Dick Bailey Motors Inc.
Mr. Terry D. Bainbridge
Janet L. and Donald G. Baker
Mrs. Janice Kay Baker
Kathy L. and Steve Baker
Mr. Kenneth W. Baker
Paula and Kenneth R. Baker
Mr. and Mrs. Richard E. Baker
Mr. and Mrs. Steve Baker
Teresa A. and William O. Baker
Carolyn D. and Arthur L. Baldwin
Susan and Gene Baldwin
Pat B. and Keith Baldwin
Mona F. Baldwin Endowment
Ms. Jolene Bales
Ms. Susan K. Bales
Ms. Betsy Ball
Mrs. Beverly K. Ball
Ms. Linn Ball
Sally E. and Dave Ballew
Ms. Marilyn Balyeat
BancCentral National Association
The Bank, N. A.
Bank 7
The Bank of Kremlin
The Bank of Kremlin
Cindy and Clint Banks
Kelsey and Mitchel Barker
Mr. and Mrs. Quinton E. Barker
Mr. and Mrs. Bob M. Barnard

Mrs. Gayle Barnes
Delores and Roger D. Barnes
Mr. and Mrs. Howard Barnett
Jeanene and Duwayne Barnett
Ms. Jamie Barr
Mr. and Mrs. Jerald L. Barr
Mr. Aaron Barrett
Ms. Judi S. Barrett
Mr. and Mrs. R. G. Barrett
Jamie and Tim A. Barrick
Ms. Rosemary Barron
Ms. Cleotis Barton
Mrs. Pearl Florene Barton
Kaye F. and Mike J. Base
Jean Ann and Larry Baskett
Lynn and Bill D. Bateman
Ms. Mary H. Bates
Mr. Elmore Bathurst
Mrs. Betty L. Batt
Gracie A. and Tom R. Batt
Ms. Bonnie B. Battles
Carol D. and Haydon Battles
Janet L. and Jerry Battles
Toni and Kirk Battles
Dr. Albert Batushansky
Ms. Alcie Baughman
Mr. Jeff Baumann
Mrs. Judy A. Bawcum
Mr. Nancy Baxendale
Dana L. and Danny S. Baze
Ms. Jane Beach
Miss Anita Beadle
Mrs. Sherry Beagley
Tina A. and Elby J. Beal
Ms. Jimmye Ruth Beames
Ms. Anita Beard
Mr. and Mrs. Edgar D. Bearden
Mrs. Karen Beare
Mr. Gary D. Beatie
Mrs. Ruth L. Beatie
Mr. Wyatt Beauprez
Ms. Freida M. Beck
Ms. Gloria Beck
Ms. Joyce Beck
Peggy and Bob Beckham
Mr. and Mrs. Gerald A. Beecher
Mr. and Mrs. David P. Beechuk
Ms. Priscilla L. Been
Mr. Keith Beeson
Beggs Telephone Company Inc.
Betty and Dr. Byron W. Behring
Misty W. and Ryan Beiswanger
Mr. Randy V. Belford
Dr. Jamie L. Belknap
Dr. Carol Ann Bell
Ruth A. and Jack J. Beller
Mrs. Donna Belli
Caroll and Clint A. Belmear
Mrs. Phyllis A. Belt
Mr. and Mrs. Glendon Benda
Jackie and Jerry Bendorf

The Benevity Community Impact Fund
Paula D. and Stuart H. Bengé
Mr. and Mrs. W. E. Benkendorf
Ms. Janet D. Bennett
Bonnie and Phillip E. Bennett
Bennett Veterinary Clinic
Claudia A. and John Berges, Jr.
Mitzi M. and Deric A. Berousek
Betsy H. and Nick Berry
Lou E. and Dewey G. Berry
Mrs. Paula S. Berry
Ms. Sue Berry
Thomas N. Berry and Company
Deb A. and Chuck Bertrand
Mr. and Mrs. Larry Dale Beshirs
Mr. Timothy G. Best
Ms. Joann D. Bethel
Ms. Wilma L. Bezdicék
Patty K. and H. E. Bible
Mr. and Mrs. Mike A. Bickford
Mr. Lloyd W. Biddick, Jr.
Mr. and Mrs. David M. Biddinger
Lucinda I. and Michael Biddinger
Barbara S. and Dick L. Bierig
Ms. Andrea D. Bighead
Janet and Paul Biller
Billie's Hair Salon
Ms. Jeanmarie M. Billington
Ms. Kathleen M. Bilodeau
Mrs. Betty J. Bingham
Jana D. Bingman, MD
Bingo Club
Ms. Brandy Binkley
Ms. Lynda M. Birch
Mrs. LaVere Bishop
Mary and Wally Bishop
Elizabeth and Ronald W. Bittle
Becky J. and Carl L. Black
Mrs. Doris M. Blackburn
Mrs. Freda Blackburn
Mr. and Mrs. C. Norman Blacklee
Mr. and Mrs. Tom D. Blackstone
Mr. and Mrs. William M. Blaik
Patricia A. and Floyd G. Blair
Mrs. Joan Blair
Mr. Curtis D. Blanc
Ms. Carol Bland
Mr. and Mrs. G. T. Blankenship
Mrs. Kaye Blaylock
Mr. and Mrs. Bert Bledsoe
Gloria A. and Pat W. Blevins
Vicki and Charles Blewett
Mr. and Mrs. Troy D. Bliss
Mr. and Mrs. Dean Bloss
Jeffrey A. and Lori Kosberg Blumenthal
Mrs. Evelyn V. Boake
Barbara R. and Dr. Karl K. Boatman
Mr. Alan C. Bodine
Dianne Hippard and Bill Boeckman
Connie and Glen Boeckman
Mrs. Ruthie A. Boeckman

Phyllis A. and Henry P. Boevers
Mr. and Mrs. Norman C. Boggs
Mr. Robert Boggs
Ann and Jeff A. Bohanan
Clarence and Leah Bohls
Gina and Brent Bolay
Mrs. Dorothy J. Bolenbaugh
Joyce and Barry Bollenbach
Patti and Tony Bollinger
Mr. Dan J. Bomhoff
Mr. and Mrs. Leon Bomhoff
Vel and Daryl Bond
Ramolee and Ted Bonds
Mrs. Helen H. Bondurant
Brenda and Fred Bonham
Ms. Linda S. Boone
Mrs. Diane M. Booze
Ginger J. and Donald A. Boren
Ms. Peggy L. Borneman
Kay and Don Bornemann
Cherry L. and Jim A. Bost
Mrs. Evelyn Boucher
Sandra S. and Allen Boules
Carrie and Frank Bourlon
Shirley A. and Daniel D. Bow
Reta J. and Murl Bowen
Mr. and Mrs. Johnnie Bowers
Bowling Seniors
Mrs. Mary A. Bowman
Rietje and Chris Boyce
Ms. Novice J. Boyd
Carrie J. and Greg A. Boyer
Jane Ann and J. D. Boyer
Ms. Molly Boyne
Mr. and Mrs. John Bozeman
BP Foundation Inc
Mr. and Mrs. George Bracken
Mrs. Kletta Braden
Rev. Dr. Charles E. Bradley
Mrs. Janice Bradley
Mrs. Naomi Bradley
Jill J. and Guy W. Bradshaw
Debby J. and Travis T. Bradt
Bonita and Steve R. Brakefield
Ms. Susan Brakhage
The Honorable and Mrs. Cliff B. Branan III
Cherri J. and Charles W. Brandley
Ms. Betty Jean Brannan
Mr. and Mrs. William C. Brasher
Patty L. and Bob Bratton
Ms. Betsy K. Braver
The Breast and Genetics Center
Polly and Stan Bredy
Mr. and Mrs. Leonard H. Brehm
Mrs. Marjorie E. Breidenbach
Merrie and Phil Brenner
S. J. Brenner, LTD
Mr. Sam J. Brenner
Lisa D. and Scott C. Brewer
Mr. Gene Brian
Bridge Clubs

Linda L. and Harold Bridges
Dr. and Mrs. Lloyd Delano Briggs
Cheryl and Steve Briggs
Ms. Jean Brill
Cindy L. and Max Brinker
Mrs. Kitty W. Brinkman
Ms. Janna L. Brinkoetter
Mr. Joe H. Britton
Mrs. Evelyn Delilah Brizzolara
Mr. Harold A. Brizzolara
Mr. Jack Brock
Dr. and Mrs. James H. Brock
Mr. Terry J. Brock
Mr. David Brodsky
Carolyn and Bill E. Brooks
Mr. Hardy O. Brooks III
Mrs. June Brooks
Mrs. Stella R. Brooks
Mr. Lynn Brower
Linda S. and C. B. Brown
Marilyn and Freddie Brown
Diane and Gary Brown
Mr. and Mrs. Brad Brown
Mr. and Mrs. Loy Brown
Merle Ann and Bill R. Brown
Karen L. and Michael W. Brown
Ms. Nelda B. Brown
Ms. Princess Brown
Ms. Sharon A. Cook Brown
Ann and Terry L. Brown
Jan C. and Bob R. Bruce
Mrs. Jerry L. Bruce
Mr. Joe K. Bruce
A. W. Brueggemann Company Inc.
Sherri W. and Don A. Brumley
Mrs. Winona P. Bruner
Mr. Bill J. Bruton
Mrs. Dorothy J. Bruton
Mrs. Elizabeth Bruton
Mr. Dave R. Bryan
Judith Warkentin and Jack L. Bryan
Mrs. Patty Bryan
Judy and Gary L. Bryant
Brandi and Michael Brynie
Lori and Justin Buchanan
Mr. and Mrs. Ronnie P. Buchanan
Mr. and Mrs. Bobby G. Bunce
Kris J. and Bryan L. Bundy
Ms. Carolyn Bural
Joni W. and Howard Burch
Ms. Tracey Burdick
Barbara and David Burge
Ms. Sharalyn Sue Burge
MSG and Mrs. Carl Burger
Mr. and Mrs. Roy Burk
Ms. Eileen L. Burke
Mrs. Verona E. Burke
Ms. Dawn Burkes
Mr. and Mrs. Howard E. Burkhead
Darla J. and David F. Burks
Carolyn and Fred Burks

Betty R. and Jay R. Burns
Mrs. Geraldine Burns-Maycumber
Rev. David Burris
Mrs. Frances I. Burris
Angie and Charlie Burruss
Mr. Jimmy Darrel Burt
Nell and Darryl Burton
Mr. and Mrs. Randall Burton
Sharon K. and Bill Burton
Ms. Billie Burwell
Mrs. Jane M. Butcher
Ms. Brenda S. Butts
Mr. Eddie J. Butts
Mr. John P. Buzbee
Karen S. and Doug Buzzard
Mrs. Pamela P. Bynum
Mr. Charles J. Byrd
Mrs. Rheba E. Byrd
Ms. Ruth Byrum
C&R Liquor
Anita J. and Marion A. Cabler
Mrs. Shirley Cagg
Mrs. Dorothy Cagle
Mika J. and Jeff Cahoj
Mr. and Mrs. Jeral Cain
Kim A. and John A. Cain
Mrs. Anna C. Cales
Ms. Nancy Ann Calhoun
Mary Ann and Mike K. Callahan
Mr. and Mrs. Keith E. Calvert
Mrs. Carolyn Campbell
Mr. and Mrs. Charles Campbell
Mr. and Mrs. Charles L. Campbell
Mary Etta and Dean R. Campbell
Dr. Nancy A. Campbell
Canadian Valley Technology Center
Mrs. Roberta Cannon
Darcy and Gilmer J. Capps
Ms. Lori K. Capshaw
Loni F. and Charles Capshew
Mr. and Mrs. Phil L. Cardwell
Mr. Steve Care
Betty J. and Jerry E. Carl
Ms. Margaret Carlile
Ms. Bettye H. Carlton
Frances and Don Carlton
Mr. and Mrs. Leo Carman
Ms. Rebecca S. Carnell
Ms. Marcella A. Carpenter
Mr. and Mrs. William W. Carr
Ms. Cathy Carreiro
Mr. and Mrs. Leon Carrick
Mr. James Carris
Mr. Patrick W. Carroll
Mr. and Mrs. Robert G. Carroll
Ms. Barbara A. Carter
Mrs. Barbara R. Carubelli
Dr. Raoul Carubelli
Terri and Brent Carver
Tanya and Leonard Case
Mr. Charles H. Cash

Miss Linda L. Cash
Mr. and Mrs. Dale A. Cassel
Patty and Larry Cassella
Cassidy Grain Company
Pat L. and Roger J. Cassiere
Sherry and Thomas B. Cassody
Mrs. Deloris J. Wehling Castor
Mr. Mike R. Castor
Mr. and Mrs. Stan W. Caufield
Jenifer B. and Marco Cefalo
Central District Past Presidents Square Dancers
Central Oklahoma Telephone Company
Judy M. and Don Chadwick
Ms. Joan P. Chain
Mr. and Mrs. Doyle Chambers
Linda and James A. Chambers
Ms. Jane Chandler
Sheila K. and Gerry C. Chaney
Ms. Alyce J. Chappell
Mr. and Mrs. C. L. Charmasson
Priscilla and Stephen Chastain
Mrs. Patricia G. Chasteen
Dana K. and Pat L. Cheap
Mrs. Lettie Cheeseman
Mrs. Beverley E. Chess
Ms. Holly H. Childs
Teresa S. and Bruce Chill
Linda and Garth Ching
Chisholm Trail Corral of Westerners International
Chisholm Trail Limousin
Ms. Darla Chitsey
Ann and Dr. Mike L. Chowins
Mrs. Mary L. Christensen
Mary A. and Ralph A. Christofferson
Lily Ann and Bill Christopher
Katherine F. and Buddy R. Churchill
Mr. Brian Cink
City of Vernon
CJ Farm
Mr. Robert N. Claborn
Ms. Donna J. Clack
Katie M. and Charlie Claggett
Bob and Jane Clark
Mr. and Mrs. Bruce Clark
Mr. Chip Clark
Patricia A. and Dan A. Clark
Mr. and Mrs. Ben L. Clark
Carolyn M. and Jim C. Clark
Ms. Joleta Clark
Ms. Kathryn R. Clark
Beverly A. and Nate E. Clark
Peggy J. and Rufus Clark, Jr.
Mr. and Mrs. Steve Clark
Class of 1954
Class of 1956
Ms. Revelle B. Clausing
Ms. Vickie J. Kersey and Mr. Bill Clay
Mrs. Mary Alice Claybaugh
Clayco Warehouse and Supply Inc.
Gayle and Billy Cleary
Charlene and A. B. Clement, Jr.

Ms. Connie Jo Clement
Steven E. Clemente, PhD
Madeline L. and Stan Clements
Ms. Marsha Clift
Mr. and Mrs. Clay D. Clinesmith
Mrs. Lorene Clouser
Mrs. Carolyn S. Clover
Ethel and L. B. Coe
Mrs. Helen M. Coffey
Mr. Jack L. Coffey
Mr. and Mrs. John Coffman
Ms. Sue A. Cogdell
Mr. Michael Cohen
Sharon and Murray Cohen
Catherine and Mark T. Coke
Ms. Kathy Cole
Mrs. Jeanette S. Coleman
Mr. and Mrs. Jim L. Coleman
Miss Vicki Coleman
Linda Pat and Jim S. Colgan
Dena and Eric Coll
Mrs. Dee Colley
Mr. and Mrs. Joe B. Collins
Ms. Jane Collins
Ms. Kimberly Collins
Monica and Mark Collins
Kathy and Ron Collins
Mr. and Mrs. Pat Colton
Lindy and Gary D. Combrink
Sandy and Bob L. Compton
Mr. and Mrs. William D. Compton
Mr. Scott Comstock
Mr. Charles Conley
Doris O. and Dick L. Conley
Mrs. Bettie J. Conn
Dr. and Mrs. Don D. Connally
Kathy N. and Michael N. Conrad
Mrs. Barbara Constien
Mr. and Mrs. Jerry C. Cook
Mr. and Mrs. J. C. Cooley
Mr. and Mrs. Gerald Cooper
Mr. and Mrs. Bob Copeland
Mr. and Mrs. Melvin H. Copeland
Mrs. Inez R. Copelin
Mr. and Mrs. J. W. Coplín
Elaine T. and W. Rex Corman
Mrs. Marie T. Corbyn
Lisa H. and Michael C. Corlee
Mrs. Doris L. Cornell
Mrs. Mary E. Cornett
Deborah and Paul D. Corr
Mary Margaret and Bob J. Corriston
Millie and Jim Cortassa
Mrs. Katherine Cottom
Sandy K. and Art W. Cotton
Jean and Don Cotton
Ms. Donnelle Cottrill
Mrs. Perina Couch
Linda J. and Jim Coughlan
Ms. Amy Countiss
Carole A. and Jere L. Courter

Mrs. Bonnie D. Courtney
Mr. and Mrs. David Courtney
Mr. and Mrs. R. D. Courtney
Ann and Tom Covalt
Tia and Ken Coventon
Mr. and Mrs. Dale Covington
Nancy and Earl W. Cowan
Ms. Susan C. Cowden
Tracye J. and Carl Cox
Gail and Don Cox
Ms. Gayle M. Cox
Mr. and Mrs. William C. Cox
Stanley and Elizabeth Cox
Eleanor S. and William F. Cox
Mrs. June Coyle
CPAOKC, PLLC
Dr. Cecile M. Crabtree
Ms. Gloria Crabtree
Crabtree Pharmacy
Ms. Lois M. Craft
Sharon K. and Dennis L. Craig
Aletha J. and Eldon J. Craig
T. C. Craighead and Company
Mrs. Janet L. Crank
Mrs. Mineva Crank
Mrs. Amanda G. Crawford
Louise and Bob E. Crawford
Margie and Tom Creager
Ms. Carolyn P. Crepps
Ms. Elizabeth Crews
Janice and Gary Crissup
Mr. and Mrs. Jack R. Crissup
Mr. and Mrs. Tom E. Criswell
Sarah and William E. Cromwell
Virginia L. and Vernon E. Cromwell
Mrs. Dorothy G. Crone
Mrs. Bernice A. Cross
Ms. Sherrie M. Cross
Mrs. G. Crosser
Ms. Elizabeth W. Crow
Ms. Barbara Crowley
Judith and Bob M. Crowley
Anne and Bruce Crum
The Crumm Family
Mrs. Jacque Crusinbery
Ms. Gladys F. Crutchfield
Mr. Richard Cudd
Mr. and Mrs. Jerry C. Cude
Ms. Barbara Cudney
Ms. Joy L. Cudney
Elizabeth P. and Robert D. Culp
Mr. Timothy Culp
Mrs. Jo Ellen Culver
Dolores M. and Charley L. Cunningham
Mr. and Mrs. Haile Cunningham
Jan and John W. Curran
Mrs. Pat M. Currence
Mrs. Lisa G. Currie
Ms. Arla J. Curry
Mrs. Virginia B. Curtis
Mr. Wayne Curtis

Mrs. Carolyn Cury
Carole L. and W. D. Cutsinger
Judy and Everett R. Cutter
Mr. and Mrs. Larry Cypert
Ms. Malinda Cyphers
Terri and David Dahlgren
Mark and Dana Dalton
Ms. Kiyana Dan
Mrs. Carolyn Darby
Jo and Ed J. Darling
Ms. Venus D. Dartez
Ramona and Don Dauphin
Mr. and Mrs. Warren L. Davenport
Joanne S. and Gil Davidson, Jr.
Mr. Lee Davidson
Dolores and Marion Davidson
Mrs. Norma J. Davidson and Mr. Bruce Roberts
Mrs. Paula Davidson
Virginia C. and Bruce E. Davis
Mr. and Mrs. Charles T. Davis
Fay B. and Claude D. Davis
Mr. Dave M. Davis
Ms. Denice R. Davis
Mr. and Mrs. James F. Davis
Mr. Kevin Davis
Dr. Mary E. Davis
Mr. Raymond E. Davis
Sandra and Ted Davis
Ms. Virginia Sue Davis
Billye F. and William D. Davis
Myra E. and Ron Davison
Ms. Eileen Day
Mrs. Joyce C. Day
Mrs. Karen A. Dean
Jacque M. and Rick M. Dean
Mr. and Mrs. E. L. DeBois
Mr. and Mrs. Tim E. DeClerck
Judy L. and Cal K. Deem
Ms. Margie C. Dees
Mrs. Ruth E. DeHaas
Cheryl and Bill DeJager
Ashley and Blake Delamarter
Mrs. Lagatha Delaney
Mrs. Nina Delorme
Ms. Liz DeLucia
Mr. and Mrs. David M. Demmer
Dr. and Mrs. Gary B. Dempsey
Ms. Michelle L. Dempsey
Mary and Omar Dennis
Patty A. and Roy L. Dennis
Dennis Plumbing Company
Jo Ann and Bob L. Denny
Department of Corrections
Mr. John R. Depe
Ruth M. and James A. DeSilver
Janette and Jack W. Deskin
Mr. Jeff DeSpain
Linda K. and Tom H. DeSpain
Mrs. Joanne W. Detamore
Peggy and Tom A. Devinish
Sherry and Dirk Dewald

The Honorable and Mrs. Dale DeWitt
Gerri A. and Gene DeWitt
Ms. Antonia Diaz
Mr. and Mrs. David W. Dick
Kathy and Jerry W. Dick
Peggy M. and Kenneth Dickerson
Sharon and Mike Dickey
Jane and Robert L. Diel
Ms. Jackie M. Dierksen
Mr. Jeffrey M. Dierksen
Ms. Lynn Ann Dietrich
Sharon and Wendall Dilday
Mr. Dan Dill
Teresa and Rick Dill
Ms. Ruby E. Dillard
Mr. and Mrs. Tracy Dilliner
Annie E. and Peter Dillingham
Ms. Ann K. Dillon
Ms. Dona L. Dillsaver
Ms. Karen L. Dillsaver
Ms. Karen Dittman
Ms. Syble K. Ditzler
Ms. Evelyn W. Divine
The Honorable and Mrs. Bryan C. Dixon
Mrs. Carla A. Dixon
Mary Alice and Jim Dixon
Mrs. Maxine Dixon
Dr. Raymond Dixon
Ms. Lou Ann Doak
Mr. and Mrs. James K. Dobbs III
Ms. MerrieSue Dohert
Ms. Rebecca Dodd
Mr. John J. Dobby
Frances A. and Dewel E. (Skip) Dolan
Marilyn and Michael Donohew
Ms. Doris Donwerth
Mr. Scott Donwerth
Ms. Peggy Dooley
Mrs. Juliene Dorsey
Paul and Mildred Doss
Mr. and Mrs. Rick Dougherty
Jane A. and Steve A. Douglas, Jr.
Sheila J. and Steve Douglas
Mrs. Ines M. Dowdy
Dr. and Mrs. John C. Doyle
COL and Mrs. Orvis R. Doyle
Dr. and Mrs. Gene Drake
Denise and Doug Dreiling
Whitney Driver, MD
Mr. Richard L. Druse
Jean and Clyde Duckett
Helen L. and Jim Duckett
Mr. Mike Duffey
Peggy and Don H. Dugan
Mr. and Mrs. Jack H. Duncan
Pat J. and Joe Duncan
Mrs. Mary E. Duncan
Duncan High School Class of 1955
Kaye and Richard E. Dunham
Dr. and Mrs. Norman L. Dunitz
Mr. and Mrs. Gary J. Dunlap

Mrs. Linda K. Dunlap
Ms. Alicia Dunn
Mr. and Mrs. Larry Dunn
Mrs. Luceen J. Dunn
Ms. Peggy Dunn
Mrs. Janice Dupree
Ms. Kathy A. Durland
Linda and James A. Duty
Mr. and Mrs. Steven L. Dyche
Marguerite and Max Dye
Mr. and Mrs. Sam Dykeman
Mrs. Gay L. Eakes
Mr. and Mrs. Paul Early
Kathy and Don Easter
Mrs. Phoebe L. Eaton
Mr. and Mrs. Rick D. Echols
Mr. David R. Eckart
Beverly and Dean Eckels
Verleta R. and Duane Eckels
Mr. Youssef Eddazi
Doris and Phil Edgmon
Lisa and Bentley Edmonds
Mr. Ed Edwards
Ms. Mikal Edwards
Ms. Violet D. Eggers
Joan and Steve Ehlers
Mrs. Mary Eilrich
Mr. and Mrs. Jim E. Ekstrom
Roberta A. and John Lee Elder
Ms. Jayne Elias and Mr. Roger Hemphill
Mr. John R. Elk III
Ms. Milli Ellefson
Mr. and Mrs. Joe Elliott
Sherry and Bob Ellis
Mrs. Carla C. Ellis
Judy and Cliff Ellis
Mrs. Marla Ellis
Mr. Richard Franklin Ellis
Mrs. Sue Ellis
Emmanuel Baptist Church Sonshine Class
Karla and John C. Emmen
Diane and Mark F. Emrick
Drs. Marcia and Larry D. Endersby
Engelbach Roberts and Company, PLLC
Mr. and Mrs. Ryan Stephen Engleman
Ms. Renata Engler
Enid Coin Club
Entire Design, LLC
Mr. and Mrs. Melvin D. Ernest
Mr. John Esche
Mrs. Barbara L. Eskridge
Suzanne and John M. Essary
Ms. Mary Jane Estes
Mr. and Mrs. Wm. A. Etheredge
Mr. and Mrs. Charles L. Evans
Beth W. and Ed Evans
Ms. Ida M. Evans
Mrs. Jymme F. (Cookie) Evans
Mr. Leon Evans
Mr. Ronald W. Everaard
Sheila and Gary Everett

Cheila and Ed Evey
Judy and Phil Ewbank
Ms. Sandra J. Ewing
Mr. and Mrs. M. L. Ezell
Dr. and Mrs. Timothy Fagan
Mr. and Mrs. Curtis R. Fair
Ms. Arlene Fall
Ms. Gail Farley
Mr. and Mrs. Kenneth R. Farley
Mrs. Ann Farmer
Mr. and Mrs. Robert W. Farmer
Mr. and Mrs. Coy R. Farmer
Karen and Doug Farrar
Marjorie L. and Richard O. Faucett
Fay Hudson Family
Ms. Julie Feagins
Ms. Judy N. Fears
Mary Margaret and Bruce Felber
Tracee Craig and John A. Ferencich
Mr. and Mrs. David C. Ferguson
Bev G. and Jim W. Ferguson
Sally M. and Don F. Ferrell
Linda M. and Gary L. Ferrell
Fidelity Charitable Birch and Catherine Mullins
Fund
Fidelity Charitable Gift4Giving Program
Donna L. and Jerold Field
Finkenbinder Farm
Mr. and Mrs. Don R. Finley
Mrs. Norma Finley
Ms. Evelyn Finney
First National Bank and Trust
The First National Bank of Pawnee
First Presbyterian Church Men's Breakfast Club
Cynthia A. and Kenneth L. Fischaber
Mr. and Mrs. Leland Fisher
Fisher and Company
Mrs. Leslie Wileman Fitch
Mr. Mark K. Fitch
Patricia and Theo Fite
Sonya and J. P. Fitzgerald
Mrs. SoRelle Fitzgerald
LeAwna R. and Steven P. Fitzgerald
Mrs. Alice Fitzpatrick
Elaine and Dennis Flaming
Mr. and Mrs. Len H. Flaming
Ms. Colleen J. Fleming
Mr. and Mrs. Earl Fleming
Dolly C. and Dr. David A. Flesher
Ms. Mary Clyde Flesher
Linda and Don Fletcher
Mrs. Carolyn R. Flood
Mr. and Mrs. William C. Flynn
Mrs. Betty Folks
Mr. Dale Wayne Folks
Mr. and Mrs. Delbert W. Foltz
Foltz Family Trust
Ms. Hughla F. Foreman
Mrs. Joy L. Forney
Mrs. Maurine Forrester
Joyce L. and Gerald W. Forsyth

Patricia L. and Joe M. Fortmeyer
Debra L. and Phillip E. Foss
Mrs. Betty A. Foster
Leola and Bill Foster
Ms. Colleen Foster
Kathrine and Don C. Foster
Mr. and Mrs. Joe B. Foster
Foster OHCE Club
Anita and Roger Fowler
Mr. Ben C. Fowler, Jr.
Mr. and Mrs. Jackie W. Fowler
Mrs. Ruby Jo Fox
Jeri and Wayne Fox
Mrs. Donna K. Franklin
Mr. Terry Gene Franklin
Ms. Elaine L. Fransen
Mrs. Joan Frates
Nancy S. and Merlin Freed
Phyllis and Clay Freeny
Margie and Van French
The French Kids
Friends of the Library Tahlequah
The Friendship Circle of Fairmont
Elaine and Mike Frizzell
Mr. Richard Frohnerath
Cindy and Scott Froneberger
Sherri and Bruce Fuksa
Mrs. Carrol J. Fuksa
Mr. Wayne Fullbright
Mrs. Jean Fullgrave
Shirley and Stan Funkhouser
Sue and John R. Gabe
John and Marge Gaberino
Clemy and Ernest Gabriel
Paula J. and Nelson E. Gage
Leigh Ann and Stanley R. Gahring
Mrs. Joyce Gaige
Mrs. Vivian K. Gales
Phyllis J. and Steve F. Gainor
Ms. Janice Leigh Gales
Kathryn F. and Pat Gallagher
Judy E. and Tom H. Gallaher, Sr.
Mr. Les E. Gambee
Ms. Elaine Gambill
Ms. Connie H. Gamel
Laura J. and Mark D. Gandy
Mr. and Mrs. Barry D. Gangwer
Joyce A. and Ron L. Gann
Dr. and Mrs. J. Keith Gannaway
The Gannett Foundation
Ms. Siqi Gao
Drs. Lauren and Paul Garabelli
Mr. Dennis P. Garde
Kara and John L. Gardner
Garfield County Treasurer's Office
Mr. and Mrs. V. R. Garnos
Ms. Jenny C. Garrett
Mrs. Susan I. Garrett
Mrs. Mary Kay Garrison
Ms. Tammie Garrison
Ms. Willie R. Garvin

Ms. Sheron Gates
Betty L. and Frank C. Gatewood
Eny S. and Jack P. Gatewood
Jeannie E. and John R. Gauldin
Dr. Archana and Mr. Alok Gautam
Jamie L. and Joe Gavula
Mrs. Linda J. Gay
Ms. Carolyn Gentle
Kelly and Ragon Gentry
Prue H. and Jeff Gershman
Judy and Paul S. Giaudrone, Jr.
Mrs. Charlotte W. Gibbens
Mrs. Debbie Gibbs
Marjean and A. T. Gibson
Saramay and Don E. Gibson
Mrs. Emmadelle Gibson
Mr. George T. Gibson
Ron and Sharon Gibson
Mrs. Vivian L. Gibson
Ms. Carla M. Gilbert
Ms. Kristy Gilbert
Ms. Elizabeth K. Giles
Katherine, Cannon, Becca, Elizabeth and Maddie
Mr. and Mrs. Orval Gilleland
Ms. Jackie K. Gilley
Carol and Bob Gillham
Cindy W. and Charlie L. Gilmore
Ms. Joan Gilmore
Patricia S. and Allen L. Gilson
Ms. Jennie M. Giltner
Robin J. and Darrell E. Gingerich
Give InLieu Foundation
Ms. Sarah A. Glasco
Joy and Larry Glass
Mr. Kenneth Glazier
Ms. Kathryn Glenn
Mr. Lawrence Glennie
Ms. Karen Gloodt
Mrs. Janice R. Glos
Freda F. and Don J. Godsoe
Mrs. Wynema C. Godsy
Valinda and John Goeppinger
Glenna and Dale J. Goetzinger
Mr. Joil M. Goff
Going Strong Senior Citizens
Ms. Mary Beth Goldberger
Bea and Larry Goldman
Mr. and Mrs. Thomas O. Goldsworthy
Mrs. Laura M. Good
Darlene and Jerry Goodale
Ms. Janice Goode
Mrs. Zelda Goodnight
Linda A. and Malcolm C. Goodrich
Mr. Grant Gorczyca
Ms. Margaret Ann Gordon
Ms. Betty L. Goss
Betty A. and Bill V. Goss
Mrs. Gaye C. Goss
Glendene and Wayne Goucher
Ms. Alexandra Grace
Ms. Alexandra M. Grace

Grady County Alfalfa Association
Mrs. Barbara L. Graham
Karen A. and Jay W. Graham
Becky S. and Mike Graham
Mr. Steven A. Graham
Mr. and Mrs. Stan W. Gralla
Mrs. Eddetta Grant
Ms. Sharon Gray
Alyce A. and Terry Gray
Wallie D. and Vic Graybill
Great Plains Appraisals
Lynni and Gene Greb
Yvonne and Jeff Greb
Monica R. and Ryan J. Greb
Mr. and Mrs. Austin Green
Ms. Bonnie Green
Mr. and Mrs. Donald R. Green
Mr. and Mrs. Geary Green
Mrs. Kathryn Greene
Joyce M. and Robert L. Greenhaw
Sharon F. and James A. Gregg
Kay L. and Norman L. Grey
Mr. and Mrs. Robert Gribble
Mr. and Mrs. David Griebel
Barbara and Dalton Griffin
Mr. and Mrs. Jack G. Griffin
Mr. Jeff D. Griffin
Mrs. June Griffin
Ms. Patricia Griffin
Mr. John C. Griffith
Mrs. Judy D. Griffith
Mr. Art Grigsby
Mr. and Mrs. Edd K. Grigsby
Mr. and Mrs. Stanley H. Grigsby
Mrs. Ann Grilliot
Ms. Jane S. Grimshaw
Mr. and Mrs. Jack E. Grisham
Ms. Janet Grissom
Mr. and Mrs. Eldon Gritz
Mr. and Mrs. Tim F. Gross
Mr. and Mrs. Ben Grove
Stacy and Allen Grubb
Diann and Vernon Grubb
Dr. William R. Grubb
Vicky and Robert A. Gudge
Mrs. Kelly K. Sotor Gunn
Linda C. and Darrell Gunsaulis
Ms. Karen L. Gunter
Mr. Bruce Gwinn
Miss Gail Hackett
Mr. and Mrs. Ronald R. Hadwiger
Ms. Jackie I. Haines
Ms. Melanie Haines
Ms. Wilma Hajek
Mr. and Mrs. James E. Halbrook
Sandy and Bernie Hale
Anita and Bill Hale
Linda and Greg Hall
Ms. Marilyn F. Hall
Mrs. Patricia D. Hall
Christie and Skip Hall

Halliburton Giving Choices
Mr. Bruce J. Hamburger
Georgia and Charlie C. Hamer
Mr. and Mrs. Larry L. Hames
Debra S. and Randy Hamil
Margie and Butch Hamilton
Mrs. Nancy J. Hamilton
Ms. Toxie Hamilton
Mr. Kenneth G. Hamm
Ms. Lynn Hamm
Mrs. Ruth Ann Hammond
Mrs. Sharlene Hammons
Mrs. Reba Hanan
Bonnie P. and Keith Hand
Ms. Fredith S. Hanifan
Ms. Margaret A. Hanifan
Mr. and Mrs. Dwight Hankins
Connie and Marvin Hankins
Mr. and Mrs. G. W. Hannah
Valerie J. and Jay Hannah
Mrs. Sandra Hanner
Ms. Donna J. Hansen
Mrs. Marilyn D. Hanska
Ms. Zela M. Hanson
Ms. Frances V. Harbert
Miss Imogene Harbin
Donna S. and Jim E. Hardin
Ms. Marian E. Hardin
Mr. and Mrs. J. Patrick Hare
Ms. Barbara L. Hargis
Joyce L. and Elson P. Hargrove
Ms. Irene Harguess
Patty A. and Pat Harkin, Jr.
Kellie P. and Fred C. Harlan
Mrs. Jane B. Harlow
Jacklyn and John W. Harman
Ms. Judith L. Harman
Terri B. and David Harp
Mr. and Mrs. William F. Harrah
Mr. and Mrs. Arlyn C. Harris
Mr. and Mrs. Dale D. Harris
Ms. E. Gayle Harris
Mr. and Mrs. Frank Harris, Jr.
Mr. and Mrs. Jeff Harris
Mrs. June B. Harris
Mrs. Linda W. Harris
Mr. Braden Harrison
Mr. and Mrs. B. R. Harrison
Sandra K. and Larry Harrison
Ms. Emily Kay Harsha
Mr. Conrad Hart
Jean and David E. Hart
Mr. Kristopher Hart
Mr. Carl Hartwig
Dorinda and Jack Harvey
Ms. Lisa G. Harvey
Mr. and Mrs. Glenn Hasty
Sherrie and Jack Haub
Mary W. and Robert L. Haight
April L. Haulman and Ed Cunliff
Mr. and Mrs. J. S. Haus

Donna J. and Harry Havins
Mr. and Mrs. James F. Hawkins, Jr.
Mary E. and Jerry L. Hawkins
Mrs. Juanita Hawkins
The Hawks Football Team
Hawthorne Club of Shawnee
Mrs. Joyce A. Haxton
Mr. and Mrs. Curtis Hayes
Mrs. Helen L. Hayes
Mr. and Mrs. Jerald W. Hayes
Mr. and Mrs. Jerry D. Hayes
Mr. Jeffrey A. Hays
Sondra and Robert Hays
Dee and Tim Healy
Elaine and Jimmie G. Heard
Mr. and Mrs. Jon Heavener
Heavener High School Class of 1965
Mrs. Dahlia A. Hedges
Amber and Ricky J. Heflin
Mrs. Anna S. Hefner
Ms. Constance Jane Heinen
Mr. and Mrs. Ted Heldermon
Mr. Bruce L. Heller
Ms. Sandra Heller
Mr. and Mrs. Gary D. Helt
Ms. Amy Henderson
Ms. Ellise Henderson
Sue and Jim Henderson
Julie and Leslie Henderson
Kay and Max Henderson
Mr. and Mrs. Terry A. Henderson
Ms. Elizabeth Hendrix
Ms. Iva P. Henke
Marcia K. and Don Henne
Hennessey Child Study Club
Hennessey Mothers Club
Recia and Gary Hennigh
Mr. Marvin Henricks
Mr. Greg T. Henry
Ms. Jackie Henry
Ms. Rita A. Henry
Ms. Maxine Henslee
Mrs. Elizabeth Hensley
Mr. and Mrs. Hubert Hensley
Ms. Joyce Hensley
Mr. Robert E. Hensley
Ms. Sue Henthorn
Mr. Joseph W. Herbert, Jr.
Miss Angela D. Hermanski
Charlene and Jim Hermanski
Mary E. and Charles B. Herrin
Kim and Bill J. Herron
Ms. Tara Hesson
Linda L. and Gene Hester
Tracey and Roy Hester
Ms. Shelly Hickman
Mr. William H. Hickman
Jimmie W. Hicks
Ms. Kate Hicks
Ms. Mary Ellen Highfill
Mr. and Mrs. John M. Highley, Jr.

Mrs. Farol L. Hightower
Joyce E. and Edward E. Hildebrand
Sonja J. and Leon Hill
Ms. Marian P. Hill
Linda and Mark Hill
Mrs. Mary Sue Hill
Connie and Mike Hill
Kim and Mike Hill
Sherry A. and Steve Hill
Ms. Cheryl Hinckley
Mr. and Mrs. Lyle K. Hinds
Mr. and Mrs. Leslie M. Hines
Linda M. and Dean P. Hinton
Dr. and Mrs. David C. Hitch
Hazel L. and Bill R. Hitt
Mrs. Nila Rose Hobbs
Mr. Mark Hodges
Ms. Robin Hodges
Ms. Christina Hoferitza
Kelli and Bob Hoffman
Randy (Miranda) and Larry R. Hogan
Mr. and Mrs. Vernon E. Hohmann
Nancy and Kyle Hohmann
Mrs. Dinah Holbrook
Mrs. Betty Holcomb
Mr. Jason Holcomb
Mrs. Joy K. Holcomb
Annabelle and Lee Holcombe
Mr. and Mrs. Steven L. Holcombe
Glenda and Dewey Holdeman
Judy L. and Kenneth L. Holden
Robbie and Danny Holder
Judy and Jerry Holderread
Ms. Lu Holding
Mrs. Karen S. Holland
Ms. Pam B. Holland
Ms. Doris Holle
Jean and Bobby L. Holloway
Mr. and Mrs. Philip L. Holloway
Frances and Jon G. Holman
Ms. Linda Holman
Mrs. Lois M. Holmboe
Judy and Burl Holmes
Ms. Suzanne Holmgren
Mr. and Mrs. Gary B. Homsey
Honey Creek Home Owners Association Inc.
Mr. Scott W. Hooker
Machelle and Cody Hooper
Debbie and Mark Hoose
Alma F. and Jim Hopkins
Mr. and Mrs. Robert S. Hopkins
Nina and Bruce D. Horn
Mrs. Lois M. Horn
Ms. Phyllis Horn
Mr. Curtis L. Horrall
Charlotte and David Horton
Mr. and Mrs. Fred S. Horton
Mrs. Bertha L. Hostetler
Mendy L. and Brady D. Hostetler
Mr. and Mrs. Joe C. Houk
Ms. Karen D. Fry Housley

Ms. S. Hovasse
Anne M. and Campbell P. Howard
Mr. and Mrs. Donald E. Howard
Mr. and Mrs. Gene Howard
Linda and Ken Howard
Ms. Phyllis A. Howard
Ms. Carla Howell
Ms. Glora Dawn Howell
Mr. Tuffy Howell
Mr. George Howry
Mr. and Mrs. Rick Hudak
Mrs. Andrea G. Hudgens
Ms. Teresa Hudgens
Janice M. and Charles A. Hudson
Mary Ann and Roger J. Huey
Darla E. and Dale C. Huffman
Mr. and Mrs. Don C. Hughes
Mrs. Michele M. Hughes
Ann and Mitch Hull
Mrs. Julia F. (Pete) Hullinger
Mr. and Mrs. Homer H. Hulme, Jr.
Nancy S. and George L. Human
Mrs. Mary Hummer
Pam and Kim A. Humphrey
Mr. Todd J. Humphrey
Mrs. Carolyn P. Humphreys
Kenneth M. Humphries, PhD
Emily and James Hunnicutt
Ms. Cathy Hunt
Deidre and Michael Hunt
Mrs. Shirley S. Hunter
Jane P. and Jerry Hurst
Jan E. and Mike W. Hurt
Mr. and Mrs. Merle D. Husted
Diana L. and Chris Hutchinson
Ms. Ann C. Hyde
Ms. Virginia L. Imig
Independent Insurance Agents of Oklahoma
Mrs. Carol Ingraham
Joyce and Jerry E. Ingram
Pam and Raymond Inman
Mrs. Marolyn B. Irby
Mrs. Mary L. Isaac
Ms. Earlene Ivy
Mrs. Marilyn A. Jablonski
Mrs. Jean C. Jack
Jack's Outdoor Power Equipment
Deanna and Gene O. Jackson
Ruth S. and Jim J. Jackson
Ms. Velda Jackson
Jackson, Fox and Richardson, PC
Mr. and Mrs. Mike Jacobi
Ms. Anita L. James
Sheryl K. and Donald L. James
Mr. Jason James
Ms. Karen A. James
Judy C. and Robert S. James
Becky L. and Stephen T. James
Karen O. and John Janovy, Jr.
Dianne and Jim M. Jantzen
Bobbie J. and Jim Janway

Jan and Carl Jarboe
Steve and Odell Jarman
Ms. Sofia R. Jawaid
Mrs. Elma G. Jellison
Mr. and Mrs. Larry W. Jenkins
Susie J. and Gary C. Jester
John Deere and Company
Mrs. Jeanie Johns
Ms. Alice E. Johnson and Ms. Shirley C. Wunder
Barbara and Jeff Johnson
Ms. Belleva S. Johnson
Gennie A. and Bob M. Johnson
Sandra R. and Charles D. Johnson
Darlene and Corky Johnson
Ms. Deborah J. Johnson
Rev. and Mrs. Donald B. Johnson
Mr. Ernest C. Johnson
Jackie B. and Faron L. Johnson
Dr. Glen D. Johnson, Jr.
Mr. and Mrs. James M. Johnson
Mrs. Karen S. Johnson
Mr. and Mrs. Rick Johnson
Laquita and Charles L. Johnson II
Mr. and Mrs. Mike H. Johnson
Ms. Nelletta F. Johnson
Sandy K. and Ron D. Johnson
Mrs. Sharon K. Johnson
Mr. and Mrs. Timothy E. Johnson
Mrs. Wilma Johnson
Wilma and Coyt E. Johnston
Ms. Joleta L. Johnston
Mr. Roy D. Johnston, Jr.
Mrs. Margaret C. Jolley
Mr. and Mrs. Johnny David Jones
Vanessa and Brad Jones
Mrs. Eloise C. Jones
Mr. Gail P. Jones
Alceon and Gary A. Jones
Reda E. and Gary D. Jones
Ms. Jana L. Jones
Jo Ellen and Stanley Barnett
Ms. Jo Jones
Debbie and John Jones
Mr. and Mrs. Robert H. Jones
Martha and Rufus Jones
Ms. Sue Jones
Mr. and Mrs. John T. Jordan
Ms. Pam Jordan
Mrs. Tammy Jordan
Judith M. and James R. Jorden
Debbie K. and Mike R. Judd
Ms. Linda Judkins
Mr. and Mrs. Kenneth Jumper
Mr. and Mrs. Scott M. Kadechuk
Mr. and Mrs. Mike Kahn
Mrs. Donna R. Kalbfleisch
Mrs. Barbara Kamp
Mr. Luke B. Kannady
Hilary and Donald B. Karchmer
Ms. Sandra J. Karczewski
Mr. Gregory Karnes

Dr. Tommy K. Karns
Kay and Mike Karns
Mr. Jerry E. Kashwer
Pauline and Roger D. Kassik
Bertha A. and William F. Kassinger
Elizabeth A. and Mike Kastl
Helen S. and Henry M. Katz
Mr. Dennis M. Kaufman
Mrs. Lois Kathleen Kaufman
LaVonne and Jim Kauk
Ms. Jean Kay
Ms. Janna S. Kearns
Mary and Brent Keck
Mr. and Mrs. Donald L. Keel
Brenda and Richard M. Kehrer
Mrs. Betty Keiffer
Mr. and Mrs. Dean Keiffer
Karin M. and Dr. Garland K. Keithly
Carol and Ron Keller
Linda and Dale Kellett
Mrs. Mildred Kellison
Mrs. Shirley Kendall
Ms. Gina Kendrick
Dorothy J. and Edward R. Kennedy
Mr. John Kennedy II
Mr. and Mrs. Leland R. Kennedy
Mr. Tom Kennedy
Cheryl and Dan Kent
Mrs. Margaret J. Kenyon
Ms. Nadine Ketcher
Mr. David C. Key
Mrs. Elsie J. Keys
Jacquelyn and August M. Khilling
Mr. Clifford G. Kilian
Martha A. and Michael W. Killam
Michelle and Hugh Kimball
Mrs. Pat L. Kimball
Ms. Martha T. Kimbrough
Michele E. and Quinton Kinder
Karen and Grady King
Ms. Patricia F. King
Mrs. Wanda F. King
Miss Zil R. King
Maggie M. and Jerry L. Kingcade
Mr. and Mrs. David M. Kingery
Ms. Ruth A. Kingsley
Mr. and Mrs. David Kinney
Mrs. Diana Kinzey
Denise and Kris Kinzie
Peggy R. and Johnny C. Kirby
Mr. and Mrs. Temple Kirby
Kirby's Wrecker and Service
Ms. Lee Kirk
Jolene and Tommy Kirkes
Ms. Leslie B. Kise
Mrs. Susan C. Kivel
Kiwanis Club of Alva
Kiwanis Club of Shawnee
Mrs. Dottie K. Kizziar
Ms. Alice Klein
Mr. and Mrs. William B. Kleinhoff

Mrs. Marlene C. Klepise
Mrs. Barbara Kletke
Mr. and Mrs. Harry P. Kliewer
Mr. and Mrs. Darrell Kline
Ms. Sue Klingaman
Mr. and Mrs. Jack Klinger
Ms. Jo Ann Knecht
Mr. and Mrs. Steve W. Knight
Mrs. Lena M. Knopfel
Mrs. Jere L. Knox
Amber and Michael Knox
Sharon K. and Leon D. Koehn
Sheila A. and Bernard E. Koetting
Beverly J. and Gary L. Kofoed
Janelle and Phil R. Kopp
Debra and Michael H. Koppitz
Susan E. Kovats, PhD and Jose Alberola-Ila, MD
Mr. and Mrs. Craig D. Kovin
Susan K. and Greg A. Krall
Mrs. Evelyn Kramp
Mrs. Karen J. Krausse
Mr. Larry L. Krausse
Mr. and Mrs. Michael Kreiger
Kevin and Katherine Kreizenbeck
Mrs. Linda M. Kremeier
Robin R. and Brad W. Krieger
Mr. Kyle Krieger
Mrs. Martha J. Krivanek
Mr. and Mrs. Robert J. Kruchoski
Miss Jackie Krutsinger
Ms. Angela Kryslar
Ms. Nicole Kuhns
Mr. and Mrs. Charles J. Kuntz
Ms. Lori Kuntz
Bonnie L. and Bill L. Kurtz, Jr.
Ms. Margaret S. Kymes
Mr. and Mrs. Kent Lackey
Dr. George H. Ladd
Jane L. and Leo Ladefian
Mrs. Cinda W. Lafferty
Ms. Pamela Lafleur
Paula and Brian Lahann
Edith and Michael S. Laird
Lakewood Christian School
Susan and Bill H. Lamb
Jackie Lamb
Sally and Mark Lamb
Mr. Hicks A. Lambring
Mr. and Mrs. Bud Lamke
Mr. George H. Lampton
Mr. and Mrs. Ron Lancaster
Mrs. Nova R. Landrith
Ms. J. Renee Lane
Jennifer and John Lang
Mrs. Jovita Lang
Cindy and Tim Lang
Mr. and Mrs. Dan H. Langford, Jr.
Judy and Richard Langston
Mrs. Betty I. Larabee
Bonita and Lynn Laske
Mr. and Mrs. Mike T. Lassiter

Ms. Judy Laubach
Jennifer L. and Lee Laubach
Hanne and Leon Laugginger
Linda S. and Edward L. Laverty
Ms. Ernestine Lawson
Mr. and Mrs. Melvin R. Lawson
Mr. and Mrs. Leon Lax
Ms. Marilyn G. Layne
Lazy Susan's
Hung T. Le
Dixie A. and Al J. Ledbetter
Karen and John M. Ledbetter
Ms. Dolores M. LeDoux
Ms. Bettina Ledterman
Ms. Amanda Lee
Shirley J. and Charles E. Lee
Ms. Mary Lee
Jack and Peggy Lee
Monte R. Lee and Company
Mrs. Lillian L. Leeds
Mrs. Lisa Lees
Mrs. Nadine J. LeForce
Ms. Denise Lehman
Betty L. and Don E. Lehman
Peggy A. and Ken P. Lehman
Mr. and Mrs. Mike H. Leland
Carol S. and Lavern A. Lenaburg
Ms. Laurnell E. Lenz
Mrs. Loleta Mae Leslie
Mr. Max Leslie
Ms. Tommie L. Levi
Ms. LaCrecia A. Lewis
Ms. M. Katherine Lewis
The Lewis Family
Jian Li, PhD
Ms. Diane M. Liebl
Judy E. and Guy H. Liebmann
LifeStyles Stores Inc.
Jackie S. and Lane E. Ligon
Patty and Chris J. Lillard
Judy G. and Roy L. Lindsey
Dr. Susan Wyatt and The Honorable Jim R. Linehan
Mrs. Lola F. Lingo
Mr. and Mrs. John Aaron Linn
Beverly and Warren L. Little
Ms. Sue Litton
Carla J. and Tim Livesay
Margaret and Tommy D. Lloyd
MaryAnne and Shawn Lockstone
Karen S. and Loy Lockwood
Ms. Pauli D. Loeffler
Mrs. Susan J. Loeliger
Virginia and Ted Loesch
Mr. and Mrs. Samuel D. Loftin
Mrs. Arlene Logan
Mr. and Mrs. Howard Logan
Kim and Terry Logan
Dr. Terry Lohmann
Ms. Karen Lomax
Donna K. and Buddy Long
Sue and Campbell Long

Shari L. and Jerry R. Long
Jane E. and Jim M. Long
Renee and Lonnie D. Long
Barbara and Sam Long
Ms. Della K. Longhofer
Sherry and John Lookingbill
Mr. and Mrs. Jerry C. Lorenz
Mrs. Nelta Lounsbury
Ms. Jean Loup
Shelley W. and Paul Lovan
Kaye and John F. Love
Pam K. and Joe C. Lovell
Ms. Kristine H. Lovely
Mr. Michael Loverude
Kay and Tom Lovett
Ms. Phyllis Lowe
Ms. Willa Mae Lowe
Mr. and Mrs. Butch Lowrimore
Mr. and Mrs. G. W. Lowry, Jr.
Mr. and Mrs. Justin C. Lowry
Mr. and Mrs. Sam E. Loy III
Loyal Women's Fellowship
Joyce G. and Fred R. Lucas
Marla and Jerry Lucas
Mr. Laurence D. Lucas
Sue and Buck Luetscher
LuGreg Trucking, LLC
Barbara L. and Gary L. Lumpkin
Mr. Kenneth R. Lumry
Cheryl and Steve Lumry
Ms. Mary V. Lunn
Mr. and Mrs. Billy Don Luper
Mr. and Mrs. Dannie L. Luter
Mr. and Mrs. Ryan L. Luter
Lutheran Women's Missionary League
Mrs. Ruth D. Lyles
Ms. Joy V. Lynch
Mrs. Rachel E. Lynch
Mrs. Billie J. Lynn
M and M Cattle Company
Mr. John W. MacGregor II
Mr. Eddie A. Mack
Sharon K. and Jim D. Mack
Mrs. Jeanne Mackey
Peggy and Lee Mackey
Michele and Mike L. Mackey
Barbara J. and Bill F. MacSwain
Mrs.Carolynn Maffeo
Sharyne and Lyndel Mahaffey
Mickie and Kevin H. Mahoney
Mrs. Kati Maines
Nancy L. and Bill Majors
Rosalie A. and Bill S. Majors
Ms. Amanda Makin
Mr. George D. Malone
Kathy and Richard Malone
Mrs. Frances W. Maloney
Alice S. and Harold D. Maloy
Mrs. Shirley Mankin
Ms. Carol G. Mann
Ms. Helen Mann

Ms. Marla J. Mann
Mr. and Mrs. Don L. Manning
Mrs. Dorothy Louise Manning
Linda and Stan D. Mannschreck
Connie L. and John T. Maple
Mr. Tom A. Marberry
Ms. Billie W. Marcoux
Mande and Clint Marcum
Mrs. Peggy A. Mariano
Karla and Jim W. Markle
Jim Markle Auto Repair
Linda J. and Danny Marler
Ms. Jimmie F. Marrs
Ms. Karee Mars
Mr. Hazen Earl Marshall
Mr. Reggie Marshall
Mr. Alan Marthinsen
Reeta and Billy J. Martin
Dr. Christy Martin
Mr. Jim K. Martin
Ms. Judith Martin
Ms. Marge Martin
Ms. Pam S. Martin and Mr. John M. Carter
Mr. and Mrs. Paul D. Martin
Terry and Rita Martin
Diane and Steve L. Martin
Martin Siding and Windows Inc.
Mary K. and Fred W. Marvel
Mr. and Mrs. Robert G. Mascho
Ms. DeLores F. Mason
Ms. Melanie Mason
Masonic Lodge #40 AF and AM
Mrs. Linda L. Massad
Mr. and Mrs. Gary Massey
Jeannette and Steve Massey
Mr. Conrad D. Masters
Ms. Leta Mastroni
Katie A. and Jamie J. Mata
Mrs. Charlotte Ann Mattson
The Maxwell Families
Mr. Brett May
Ms. Martha May
Ms. Marsha Mayer
Amy and Kenny Mayes
Mayfair Church of Christ
Mrs. Mary L. Mayfield
Ms. Wanda L. Mayfield
Marjorie L. and Don D. McAllister
Mrs. Evelena McAnally
Susan and Rex McAnally
Mr. and Mrs. Mike McAskill
Mrs. Judy A. McBay
Joyce and Carlos McBride
Vereta and Max McBride
Mr. and Mrs. James R. McBurnett
Ms. Kathryn McCaig
Mrs. Alicia McCall
McCalla Brown Patel, LLP
Mr. Justin McCallon
Barbara J. and Jim B. McCampbell
Ms. Toni J. McCarthick

Mrs. Melba H. McCaughey
McClain County Farm Bureau
Mr. Russel McClintock
Jean and Dean McCollough
Ms. Shirley McConnell
McCormack and Associates Inc.
Ms. Martha D. McCuddy
Mrs. Cordelia McCullough
Donna M. and Eldon W. McCumber
Bea and David E. McCune
Mr. Tom McCurdy
Ruth Ann and Harold E. McDaniel
Mr. and Mrs. Michael McDaniel
Mr. and Mrs. Bill D. McDaniel
Ms. Christine McDermott
Mrs. Lois M. McDonald
Tammie and Richard C. McDonald
Kelly and Brady McDonough
Ms. Gerry B. McElroy
Ms. Marilyn Ann McEnroe
Ms. Hazel E. McEwen
Mr. Lary McFall
Mr. and Mrs. Jerry B. McGavock
Ms. Judy H. McGee
Mrs. Mary Ann McGee
Nancy and Mike McGowan
Janet S. and Benny E. McGowen
Brenda and Mick McGowen
Dia D. and Steven L. McGowen
Mr. and Mrs. Duane McGuire
Mrs. Clarice D. McIvain
Mr. Clark McKeever
Mr. M. Scott McKenna
Mr. Scott M. McKenna
Anne S. and Jere W. McKenny
Gayle M. and Jerry McKinley
Mrs. Laura N. McKinsey
Betty J. and Wallan McKnight
Mr. Roger McKowan
Ms. Karen McLain
Shane McLauri Law Office
Ms. Loree McMahan
Ms. Mary L. McMahan
Mr. James McMahan
Ms. H. B. McMillan
Lisa M. and Kim R. McMullin
Mrs. Ruth McMullin
Mr. and Mrs. Allen W. McMurphy
Betty and Verlin McMurphy
Ms. Sandy K. McNabb
Mr. and Mrs. Bobby McNair
Mr. James McNamara
Ms. Suzanne McNatt
Miss Dawn Machele McNeil
Mrs. Betty McNutt
Mrs. Suzanne M. McOsker
Mrs. Phyllis M. McTiernan
Bobby and Gene McVey
Mrs. Marie E. McWilliams
Mrs. Melba F. Mead
Ms. Phyllis A. Means

Stephanie V. and David L. Meara
Dr. and Mrs. Michel S. Medawar, Jr.
Mrs. Mary Anne Medlock
Ms. Belva Meench
Mrs. Traci Meese
Margie and Butch Meibergen
Joy and Dr. Mike Meier
Ms. Mona Meier
Janice L. and Rob P. Melton
Memory Lane Cruisers of Seminole
Judy and John W. Meritt
Mrs. Dorothy M. Merrick
Sherry and Joe Merrick
Mr. and Mrs. Monte F. Merritt
Mr. Vincent Mesis, Jr.
Kathleen A. and Joe M. Messenbaugh
Mr. and Mrs. Charles E. Meyer
Mrs. Nancy Meyer
Mrs. Betty R. Michael
Ms. Gloria Michael
Ms. Lynda K. Mihalchik
Donna N. and Larry L. Miles
Mr. and Mrs. Billy V. Miller
Vickie and Cliff J. Miller
Ms. Freddie Miller
Ms. Jean A. Miller
Joy Dawn and Mike Miller
Ms. Joyce Miller
Mr. and Mrs. Keith L. Miller
Mr. Ken Miller
Paula K. and Larry G. Miller
Ms. Sharon Miller
Clifford J. Miller Agency, LLC
Mr. and Mrs. V. David Miller/Miller Family
Foundation
Mr. John C. Mills
Ms. Helen L. Millsop
Mineral Owners Association Grady County
Mr. and Mrs. Tom R. Minihan
Mr. and Mrs. H. B. Minney
Mrs. Phyllis A. Mirkes
Brian and Kayla Mitchell
Diavonte Mitchell
Mrs. Donita L. Mitchell
Ms. Mary T. Mitchell
Mrs. Pam Mitchell
Mitchell DeClerck, PLLC
Linda J. and Eulis R. Mobley
Mr. John M. Mock
Moco Electrical Supply Inc
MOCO Plumbing Supply
Modern Moms Mothers Club
Ann and Stan R. Moffat
Moffitt, Parker and Company Inc.
Laura and Jeff Mohr
Ms. Carol T. Monger
Carol and Calvin Monsma
Mrs. Carolyn Montgomery
Ms. Jennifer Montiel
Ms. Anne Moore
Nan W. and Carl L. Moore

Mr. and Mrs. Don Moore
Mrs. Drenda K. Moore
Emma L. and Eddie Moore
Mrs. Fern Moore
Janet and Joe Moore
Mr. and Mrs. Larry W. Moore
Mary E. and Don K. Moore
Mrs. Esther L. Moorhead
Moose and Stewart CPA's, PC
Deb F. and Ronnie B. Morey
Gene and Betty Morgan
Sandi and Jim Morgan
Ms. Kimberly Morgan
Marcia and Mack Morgan
Mr. and Mrs. Vernon L. Morgan
Morgan Stanley
Ms. Denise Moritz
Mrs. Harriet C. Morland
Jaymie and David W. Morley
Karynn B. and Danny C. Morris
Ms. Judy H. Morris
Mr. and Mrs. Dean Morrison
Charlene and Gaylord L. Morrison
Joy K. and Vince P. Morrison
Carol and Rob E. Moses
Mr. and Mrs. Raymond Moss
Kay and Dennis Mote
Mothers Entwined
Ms. Virginia L. Mouzakis
Kris A. and Kenneth S. Moyer
Mrs. Faye Mueggenborg
Bonnye G. and Keith F. Mueggenborg
Mr. and Mrs. Mike Muirhead
Diane and Pat Mulligan
Catherine and Birch Mullins
Cada and Paul Mullan
Carolyn G. and Jim R. Munger
Rita and Stanley Munson
Helen L. and Dr. Gordon Murley
Ms. Melrose Murphree
Mr. and Mrs. Arber Murray
Carolyn and Darryl Murray
Mrs. Elverna J. Murray
Ms. Pat A. Murray and Mr. Sonny Webb
Shirley M. and Charles F. Murrow
My Tribute Gift Foundation Inc.
Cheryl W. and Robert W. Myers
Mr. Jonathan E. Myers
Ms. Marilyn A. Myers
Mr. and Mrs. Nelson Myers
Carol G. and Bob N. Naifeh, Jr.
Nancy and Paul L. Nall
Ms. Sharon Nall
Mrs. Ruth L. Nash
Mr. Bill R. Nation
Ms. Carolyn Nation
Marylin and Charles Nease
Ms. Cheryl Neel
Mr. and Mrs. Ken R. Neeland
Patty and David G. Neely
Mr. and Mrs. Don L. Neill

Mr. and Mrs. Willard Gene Nelms
Ms. Cara Nelson
Charlotte and John M. Nelson
Shandy and Kelly Nemecek
Mr. and Mrs. Perry L. Nemecek
Ms. Theresa Nemmers
Mr. Scranton G. Nesbitt
Mr. and Mrs. Herman B. Nesser
Network for Good
Mr. and Mrs. Donald B. Nevard
Dr. Lila V. Nevrekar
Ms. Jan New
Mrs. Kathy Newcombe
Mrs. Patricia Newhouse
Betty and Larry Newman
Mr. Martin L. Newman
MAJ GEN (Retd.) Stanley F. H. Newman
Caroll L. and Jimmy Newton
Ms. Kaye Newton
Teena J. and Robert T. Newton
Mr. Long Nguyen
Dr. and Mrs. W. A. Nicewander
Jo Ann and Bud Nicholas
Barbara A. and George A. Nichols
Kathy E. and Pete Nichols
Mr. and Mrs. Charles Nicholson
Mrs. Gayla Nicholson
Ms. Kathleen Nickel
Ms. Mary A. Nickell
Mrs. Mavis Nickels
Dr. Timothy Nicklas
Vivian J. and Gary D. Nida
Ms. Jackie Niehus
Sandra A. and Peter K. Nigh
Jane Ann and Bob L. Niles
Mrs. Betty L. Nix
Peggy J. and Larry J. Nixon
Mr. Dennis G. Noble
Dr. and Mrs. Donald J. Noble
Mrs. Marissa D. Noland
Mrs. Lynda L. Nolen
Ms. Janelle Nordman
Katy and John Norman
Mrs. Martha R. Nornberg
Marjory and Terry Norris
Karen and William H. North
North Central Iris Society
Northfork Electric Cooperative, Inc.
Northrop Grumman Employees Charity
Organization
Mrs. Pat L. Norton
Francine and Gene Novosad
Nancy E. and Sam E. Novosad
Mrs. Lorena Null
Mr. and Mrs. D. J. Nuzum
Mr. and Mrs. Don L. Nuzum
Mrs. Betty Obermiller
Leah and Terry Oblander
Gloria A. and Richard G. O'Brien
Mrs. Jan R. O'Bryan
OCCF Bickford Family Gift Fund

OCCF Pat and Fred Schonwald, Jr.
OCCF Together We Give - BOK OKC Fund
OCCF Tom A. Thomas, Jr. Fund
OCCF Wm. E. & M. H. Davis Family Fund
Mr. and Mrs. Bill E. Ocker
Mr. and Mrs. James D. Odell
Sharon and Ron J. Oehl
Ms. Sue Anna O'Hara
OK 0237 TOPS Chapter Midwest City
The Okeene Child Study Club
Okeene Milling Company
Okeene Senior Citizen Center
Okeyha Mothers Club
Oklahoma Bank and Trust Company
Oklahoma Heart Hospital, LLC
Oklahoma Retired Citizens Travel Club
Oklahoma Society for Psychoanalytic Studies
Oklahoma State Bureau of Investigation
Employees
Ms. Joline Oldenburg
Mr. and Mrs. Evan Oliveaux
Mr. and Mrs. Charlie Bob Oliver
Reba K. and Jov S. Olkinetzky
Debra and Charlie Olsen
Dr. and Mrs. Dwight A. Olson
Ms. Janice S. Olson
Mrs. Marcellene J. O'Malley
Laura J. and Richard M. O'Neil
ONEOK Inc.
Ongoers
Don and Marquita Orf
Mr. and Mrs. Mike L. Orf
Tam J. and Dennis H. O'Rourke
Ms. Florine O'Rourke
Jamie O'Rourke
Iris and Randy O'Rourke
Pam and Alan Orloff
Mr. and Mrs. David L. Orwig
Ms. Staci Osborn
OU Tulsa Child and Adolescent Psychiatry Faculty
Mr. and Mrs. Mike Overby
Nancy and Danny Overland
Ms. Audelle L. Owen
Terri and Jeff Owen
Mr. and Mrs. Kel Owens
P and K Equipment Inc.
Ms. Donna Lee Paddyaker
Carol J. and Lee W. Paden
Deanna and Jim Page, Jr.
Susan and Tom E. Page, Jr.
Christi J. and Wade Pagett
Mr. and Mrs. Jack Painter
Janis Griggs and Donald L. Palik
Ms. Marilyn A. Pape
Ms. Bonnie R. Parham
Ms. Connie Park
LaWanda S. and Steven C. Park
Allison C. and Spencer Parker
Carol and Gary D. Parker
Mrs. Helen G. Parker
Juanita M. and Ralph O. Parker

Ms. Lois M. Parker
Ms. Melinda Parker
Nancy L. and Norman A. Parker
Mr. and Mrs. Odell F. Parker
Ms. Shelley A. Parker
Ms. Lisa A. Parkman
Linda S. and Robert D. Parks
Mrs. Loretta J. Parks
Mrs. Wilma F. Parr
Chris and Don Parrish
Ms. Sharon E. Partridge
Mr. Lenny Passwater, Jr.
Ms. Patricia Patric
Mrs. Rebecca J. Patten
Marcia and Dr. Gary L. Patzkowsky
Ms. Bea Paul
Mr. Ben Paul
Cherryl and John L. Paxton
Mr. C. D. Payne
Janice and Eddie A. Payne
Ms. Merlene Payne
Norma L. and Richard N. Payne
Mrs. Valerie J. Payne
Ms. Connie Peak
Mr. and Mrs. Tommy J. Pearcy
Mrs. Sonya Kay Pearson
Mrs. Rita F. Peck
Mary Anne and Robert L. Pedersen
Mrs. Priscilla Peer
Mrs. Lillian M. Peltier
Debbie A. and Alvin Pemberton
Mrs. Sandra Pendergraft
Dr. and Mrs. Richard L. Pentecost
Mr. and Mrs. Adonis R. Peoples
Mr. Arnold Peoples
Ms. Lois M. Pepple
Ms. Suzy H. Peraino
Nadine Perdue Family
Mr. and Mrs. William J. Perry
Mr. Thomas Peter
Mr. and Mrs. Fred S. Peters
Beth and Glen L. Peterson
Mrs. Ladell Peterson
Mrs. Wilma M. Peterson
Cindy A. and John A. Petree
Mr. and Mrs. Mike S. Petree
Mr. and Mrs. Bobby J. Petricek
Mr. and Mrs. Lindel E. Pettigrew
Mr. and Mrs. Cliff Pettijohn
Ms. Tamara Petty
Vicki and Bruce E. Pfeiff
Annette and Jim Pfeiffer
Lois and Harvey Phelps
Roberta J. and Sam P. Phelps
Mr. and Mrs. William C. Phillips
Mr. and Mrs. Boyd D. Phillips
Ms. Jean S. Phillips
Ms. Mary Phillips
Jackie L. and Robby S. Phillips
Mr. and Mrs. Pat Phinney
Mr. and Mrs. Larry Pickard

Mr. and Mrs. Jack Pickett
Ms. Marie E. Pierce
Priscilla A. and Ronald J. Pierce
Miss Donna Pierson
Ms. Susan K. Pierson
Ms. Sue F. Pike
Sandra and Mike Pinkerton
Pinric, LLC
Pioneer Telephone Cooperative Inc.
Mrs. Joyce Pippis
Goldie and Harold Pirkel
Barbara J. and Joe B. Pirkle
Ginger R. and Tony K. Pitman
Beth and Randy Plant
Mr. Andrew Plumpton
Ms. Cheryl A. Poe
Diane L. and Ed Polk
Mr. and Mrs. William H. Poore
Diane E. and Charles E. Porta
Ms. Sophia A. Porter
Mrs. Anna Powell
Ms. Betty Powell
Diane and John Powell
Donna G. and Johnny M. Powell
Mrs. Kathryn K. Powell
Ms. Nancy W. Powell
Mrs. Ella Powers
Mr. Eugene Calvin (Gene) Powers
Mrs. Rojean A. Powers
Mrs. Skeeter Powers
Velda and J. C. Pralle
Sharen A. and Merwyn L. Pray
Dr. Sylvanna T. Prechtl
Mr. and Mrs. Gregory Preddy
The Edward Presser Family
Judy and Roger Prewett
Donna K. and Greg K. Price
Julie Price and Ed Kennedy
Ms. Kathy Price
Barbara A. and Lyndle W. Price
Carlotta M. and Mel W. Priddy III
Joyce and Ray E. Priess
Mrs. Joyce M. Primo
Suzanne R. and Bob H. Pritchett
Ms. Julie Pritchett
Ms. Tina L. Pruitt
Wanda L. and Calvin L. Pryor
Mr. Tony G. Puckett
Kay A. and Max E. Pufpaff
Mrs. Patricia J. Pulliam
Faye L. and Jimmie L. Purvine
Mr. and Mrs. J. E. Pybas
Marie and Leroy Quance
Mrs. Colleen Quigley
QuikService Steel Company of Oklahoma City
Mrs. Jo Quillin
Vicki and Gary Quinby
Mrs. Bonnie Rader
Ms. Helen A. Radohl
Mr. Harlan Walter Ragoss
Mrs. Linda L. Ragoss

Mrs. Imogene Ragsdale
Mrs. Mary J. Rains
Mr. and Mrs. Dan Ramsey
Dorothy M. and John R. Ramsey
Miss Vicki Ramsey
Mr. Laurance C. Randall
Loye F. and Frank Randol
Mr. and Mrs. Lee C. Raney
Julie L. and Stan L. Rankin
Linda and Randall Ratliff
Clare M. and Travis E. Rattan, Jr.
Ms. Arline Rauch
Kim and Mike Rawls
Frances E. and David A. Ray
Ms. Karen Ray
Ms. Sharon L. Razor
Mr. Kyle Readnour
Mr. and Mrs. John J. Rearden
Mrs. Judith Reaves
Red Hats Cherry Tarts
Redbud Women's Club
Ann M. and Tom L. Reding
Ms. Nancy Annas Redinger
Mr. Bob A. Reece
Ms. Jo Etta Reed
Mr. and Mrs. George B. Reed
Mr. and Mrs. John Reedy
Ms. Janis Reeser
Dr. and Mrs. H. E. Reeves
Mrs. Lena M. Regan
Barbara and John A. Regier
The Registry of Oklahoma City
Peggy and Lynden Reid
Amanda K. and Mike Reimer
Ms. Dana Reindl
Mrs. Mary Jane Reinhardt
Retired Educators Association
Susan and Ted A. Reusser
Ms. Kat Reynolds
Ms. Lana Reynolds
Carol G. and Shel M. Reznik
Mr. and Mrs. Billy B. Rice
Dr. Sue A. Rice
Mrs. Susan A. Rice
Mrs. Susie K. Rice
Mr. Timothy C. Rice
Ms. Karlene Rich
Ms. Tamara Richards
Mrs. Gail A. Richardson
Mr. and Mrs. J. B. Richardson
Mr. and Mrs. Justin T. Richardson
Mr. and Mrs. Marty Richardson
Ms. Marinell Richison
Pam and Lonnie R. Rickey
Kathryn and Elbert H. Riddle
Ms. Glenda L. Riddle
Teresa and Harold Ridgeway
Ms. Kathryn Riemenschneider
Karen and Alan Riffel
Mrs. Carolyn F. Riffel
Mr. Randy Riffel

Mrs. Lois L. Riggan
Mrs. Kari Riggs
Helen and John Riley
Mr. and Mrs. Eddie Riley
Sharon and Kenneth Ringer
Ms. Sydney G. Ringer
Mr. and Mrs. Gordon J. Ritter
Mr. and Mrs. Jack D. Ritter
Mrs. Kay J. Ritter
LaDonna and Norville Ritter
Mr. and Mrs. John W. Ritz
Dana K. and Dan G. Roark
Mr. and Mrs. David R. Robberson
Marcie E. and Jarried E. Roberson
Mr. and Mrs. Joseph H. Roberson, Sr.
Ms. Arlene Roberts
Kathlyn J. and David S. Roberts
Ms. Katherine S. Roberts
Ms. Lois L. Roberts
Bana and Wilson Roberts
Betty L. and Jim Robertson
Joseph Dean Robertson, DDS
Mrs. Liz A. Robertson
Lowell James Robertson, MD
Mr. and Mrs. James B. Robertson
George Robertson Family
Kathy I. and Allen D. Robinson
Ms. Jeriann Robinson
Mr. and Mrs. Robby Robinson
Denece and Ronald L. Robinson
Kathy and John Robison
Ms. Suzi Kyte Robnett
Mr. and Mrs. James C. Robson
Mrs. Nilda C. Rodriguez
Shirley and Bill Roenbaugh
Mrs. Gloria A. Rogers
Mrs. Karen S. Rogers
Mr. and Mrs. Lynn C. Rogers
Mr. Phillip Rogers
Ms. Kristen Rogstad
Mrs. Doris Romine
Dr. and Mrs. John W. Ronck
Mrs. Caroline Roof
Carmen M. and Buford W. Rooks
Lue Ann and David D. Root
Leigh Z. and Tom D. Rorschach
Mrs. Audrey E. Rose
Rosedale Gardens Homeowners Association
Mr. Corey Ross
Sharon and Dale Ross
Mrs. Janet S. Ross
Mr. and Mrs. Jesse S. Ross
Ann and John Ross
Ms. Rhonda Ross
Mr. and Mrs. Robert J. Ross
Mr. and Mrs. Dean Ross
Jesse Ross Concrete
Helen and Joseph B. Rossney, Jr.
Mrs. Linda Savage Rosson
Donna J. and Bruce Rotan
Vicki and Frank Rother

Mr. and Mrs. Bryan Rother
Robin L. and Timothy J. Rother
Diana and Jim Routon III
Ms. Peggy L. Rowley
Mr. and Mrs. Joe Rubio
Ms. Bonnie C. Ruble
Lori K. and Richard A. Ruhl
Ms. Janis Ruppert
Janet and Arthur J. Rus
Kristin A. and Pat H. Russell
Mr. Mitchell K. Russell
Miss Sonna J. Russell
Nancy and Scott Rutherford
Mrs. Lynetta Rutledge
Ms. Kathryn E. Ryan
Salesforce
Joan and Harvey P. Salger
Mr. Bill L. Salwaechter
Ms. Meg Salyer
Mr. Ryan Samples
Ms. Dona Samuelson
Ms. Rebecca J. Sanderlin
Mr. and Mrs. Jaydee Sanders
Mr. Lonnie D. Sanders
Rep. Michael A. Sanders
Shirley A. and Roy G. Sanders
Tricia A. and Todd A. Sanders
Mrs. Wanda P. Sanders
Mr. Wilfred Sanditen
Judy W. and Billy W. Sandlin
Drs. Courtney G. and Chris L. Sansam
Jayna and Clem Santine
Mr. and Mrs. Karl Sanve
Mrs. Sally L. Sappington
Ms. Judith Sattelmeier
Mrs. Betty Satterfield
Ms. Carol A. Saucedo
Pat D. and Ron L. Saunders
Mrs. Carolyn Savage
Ms. Jo Gayle Sawyers
Cindy M. and Norman A. Sayers
Mr. and Mrs. Michael A. Scears
Ms. Nouna A. Schacher
Bonnie and Neil Schader
Ms. Beverly C. Schafer
Toni M. and Orville Schapansky
Mr. Dennis R. Scheffe
Mrs. Patricia J. Scheffe
Mr. Peter Scheible
Mr. Kelly Schenk
Kim and David Scherich
Mr. and Mrs. Steven D. Schill
Mr. and Mrs. Kenneth C. Schley
Jeanne L. and Bob T. Schlotte
Mrs. Joane Schmidt
Mr. Mike Schmitt
Jana L. and Mark Schnebel
A. Ruth and John P. Schnelle
Ms. Carolyn S. Schoeb
Ms. Kathleen R. Schoelen
Kristen and Ryan Schoeling

Mrs. Betty Schoenhals
Ms. Kay Schoeppel
Mr. David Schrader and Mr. Paul M. White
Belinda G. and Bob D. Schrick
Marilyn B. and Brett A. Schriever
Julia K. and Kelly A. Schrock
Mr. and Mrs. Bruce R. Schroder
Mr. Delvin Schutes
Mr. and Mrs. Bill Schwartz
Mr. Mark Schwartz
Ms. Catherine G. Schwarz
Ms. Elizabeth Schwarz
Ms. Jolene Schwind
Ms. Meghan Sciortino
Mrs. Berlyne Scott
Mr. Bob L. Scott
Gloria F. and Clifton H. Scott
Shelly and David Scott
Mr. Donald H. Scott
Dr. and Mrs. William A. Scott
Sue C. and Herb L. Seay
Security National Bank
Barbara and Tom Seedorf
Nancy N. and James L. Seely
Ms. Kristi Self
Mrs. Jeannine Shafer
Ellen S. and Robert L. Shafer
Brenda and Kelly Shaffer
Bonnie L. and Rick L. Shaklee
Mrs. Patricia Shank
Shirley and Ben Shanker
Mrs. Sandra Shapard
Mrs. Clarice J. Share
Mrs. Dorothy D. Sharp
Shirley M. and Eugene G. Sharp
Mr. and Mrs. Don R. Shaw
Margaret and Larry E. Shaw
Patti A. and Joey N. Shaw
Mrs. Ruth Shaw
Shawnee AARP Chapter 2654
Dawn H. and Bobby J. Shebester
Mrs. Albert Ann Sheddric
Mrs. Janice A. Shell
Ms. Sue W. Shellabarger
Mr. and Mrs. John A. Shelley
Laurie and Steve E. Shelley
Jacklyn and George F. Shenold
Loretta and Art Shepard
Eleanor and Sam S. Shepherd
Mr. and Mrs. John G. Shero
Mr. and Mrs. Don W. Sherrill
Mrs. Emily N. Sherrill
Ms. Janet Sherrill
Mrs. Billie Ruth Shields
Ms. Donna L. Shinn
Ms. Barbara A. Shoemaker
Ms. Judith A. Shook
Mrs. Marilyn G. Shook
Ms. Soeurette Shook
William H. and Evelyn H. Shopp Trust
Kristye K. and Mark Shores

Short Grass Country, LLC
Barbie L. and Terry L. Sibit
Ms. Brenda K. Sidwell
Ms. Madelyn Sierra
Mrs. Joyce Silver
Susan and Marc Silver
Miss Shirley Ray Simes
Rado and Darlene Simic
Mrs. Donna J. Simic
Mrs. Kay Simmons
Cindy S. and Bruce Simon
Mrs. Barbara A. Simpson
Caryl and Joe Simpson
Ms. Tina Simpson
Barbara and Glen Sinclair
James A. and Judy Sissney
Mr. and Mrs. Dennis M. Skaggs
Mr. and Mrs. Bob Skaggs
Mr. and Mrs. Albert Skalovsky
Mary E. and Larry D. Skidmore
Sandra S. and Richard D. Skinner
Terri and Robert Skinner
Tiffany and Daren Slater
Paula F. and Paul E. Slaton
Ms. Lacy Slatton
Ms. Diane Slayton
Mrs. Clevetta Sue Sloan
Harriet M. and Ronnie Sloan
Julie and Terry W. Sloan
Sherian and Edmond A. Slyman
Mrs. Clara F. Smart
Claude and Meredith Smartt
Mrs. Alma J. Smith
Mrs. Betty M. Smith
Beverly J. and Larry G. Smith
Gayle S. and Billy Smith
Kelly A. and Brian K. Smith
Mrs. Carolyn A. Smith
Mrs. Charlene C. Smith
Donna and Charles Smith
Mr. Charles D. Smith
Ms. Cynthia A. Smith
Lottie and J. M. Smith
Linda F. and James E. Smith
Sharon L. and Jerry W. Smith
Mrs. Jill R. Smith
Pat M. and Jody Smith
Ms. Joyce Smith
Ms. Judith A. Smith
Judy F. and James J. Smith
Ms. Linda Smith
Mr. Lloyd A. Smith
Mrs. Madeline A. Smith
Mrs. Mary R. Smith
Mrs. Michelle Smith
Dr. and Mrs. Richard B. Smith
Marilyn L. and Richard A. Smith
Mrs. Sally A. Smith
Ms. Sherri Smith
Elizabeth A. and Dr. Troy L. Smith
The Troy N. Smith, Sr. Family

Smith Plumbing and Repair, LLC
Mrs. Shirley E. Smoot
Ms. Carol J. Snider
Mrs. Mary Sue Snider
Ms. Paula J. Snodgrass
Mr. and Mrs. Leslie P. Snyder
Mrs. Stacy Snyder
Mary and Ed Solis
Mr. Daniel Somers
Mr. and Mrs. Mike Somers
Sonic Industries Services Inc.
Sooners Corner Restaurant
Mrs. Paula Soper
Karen and Daniel Sorensen
Sherry and Mark Sorrels
Mrs. Lanita M. Southall
Mr. Jack C. Southard
Mrs. June Southard
Southwest Bank of Weatherford
Southwestern Oklahoma State University Nursing
School
Donita and Paul Southwick
Southwood Baptist Church Sonshine Class
Mr. and Mrs. Richard L. Sowle
Mrs. Shirley L. Spaeth
Mr. and Mrs. Johnnie M. Spears
Mr. and Mrs. Chris V. Speligene
Barbara and Dennis L. Spencer
Mrs. Dorothy L. Spencer
Ms. Ginger Spencer
Mr. John S. Spencer
Bob and Ann Sperry
Mr. Kent W. Spille
Belynda J. and Weldon G. Spitzer
Louise J. and Tom A. Springer
Ms. M. Susan Springfield
Ella and Doug Sprung
St. Andrews Homeowners Association
St. Louis Well Servicing Company, LLC
St. Michael's Church
Ms. Sallie Jo Stafford
Mr. Ed J. Stahl, Jr.
Mr. and Mrs. Steve Stahlman
Mr. and Mrs. Ronald E. Stakem
Ms. Cindy Staley
Mr. Jesse C. Staley
Sherri S. and Randy R. Stansel
Mrs. Elaine Stark
Mr. and Mrs. Charles M. Starks
Ms. LaRue D. Starr
State Exchange Bank
State Farm Insurance Companies
Ms. Laura Steckbeck
Paula and Jack Steele
Cheryl and Mike Steffen
Shawna and Bill Stehr
Mr. Michael W. Steiner
Vickie and Phil Steinert
Ms. Fannie Stelting
Lois J. and Ralph Stephens

Mrs. Zelma Stephens
Sterling High School Class of 1956
Trula and Mike B. Stevens
Lu and Butch Stevenson
Mr. Patrick Aaron Steward
Mrs. Annette Stewart
Mr. and Mrs. Ronnie D. Stewart
Mr. and Mrs. Robert E. Stewart
Ms. Darlene Stidham
Mr. and Mrs. Rick Stinchcomb
Ms. Karla Stockton
Mrs. Phyllis Stockton
Linda U. and Bruce D. Stoesser
Ms. Farryl Stokes
Sue and Ron E. Stokley
Ms. Susan D. Hall and Mr. Mike Stollhaus
Susan and Chester Stone
Mr. Donald J. Stone
Mr. Glenn Stone
Eve D. and Jay Stone, Jr.
Dana and John Stone
Andrea D. and Jon B. Stone
Martha and Colby Stone
Mr. and Mrs. Melvin L. Stone
Laura and William Stonebraker
Mrs. Mary Stoner
Mr. Roger A. Stong
Mr. and Mrs. Paul Storm
Marion J. and Craig Story
Mr. and Mrs. David Story
Ms. Ann Stout
Dr. and Mrs. Donald R. Stout
Mr. Leon Stout
Mr. Loyd Stout
Janis and Tommy Stowe
Cindy G. and Mike Stowers
Sharon K. and Terry E. Strader
Sharon K. and D. Chris Strait
Mrs. Rachel K. Streck
Ms. Audrey J. Streetman
Kristi and Wayne Stricklin
Kathleen and Charlie D. Strohmeier
Alice and R. L. Stroud
Stroud National Bank
Mr. and Mrs. Jim M. Sturdivant
Sturgeon's Tractor and Truck Sales
Mrs. Millie M. Sullens
Janie K. and J. Pat Sullivan
Mrs. L. Joy Sullivan
Ms. Sherry Sullivan
Mr. Jeff Summerford
Ms. Peggy J. Swafford
Debra Parchman and Jim Swaim
Ms. Karen C. Swan
Mrs. Evelyn L. Swanda
Mrs. LaWana Swart
Mr. and Mrs. Charles J. Swartz
Teresa Jo and Gary Sweet
Ms. Susie Tabor
Barbara J. and Willard D. Taborsky
Leotta and George Talley

Mr. and Mrs. Pat Talley
Lou Jean and Doyle Tampleton
Mr. and Mrs. Barton L. Tate
Ms. Catherine K. Tatum
Mr. and Mrs. Alvin Tatum
Mrs. Claudine Taylor
Ms. Dolores P. Taylor
Ila K. and Don Taylor
Mrs. Elizabeth R. Taylor
Mr. and Mrs. Geary Taylor
Miss Jannette Taylor
Mr. and Mrs. Jim Taylor
Mrs. Joan Taylor
Mrs. Kelli Taylor
Margaret R. Dawkins and Kenneth David Taylor
Mrs. Linda Taylor
Marcia and Rod Taylor
Ms. Stacey Taylor
Justice and Mrs. Steven W. Taylor
Naea M. and Les E. Teachman
Tecumseh Housing Authority Resident Council
Association
Aditya Teekayagari
Ann and Dan L. Teeters
Mrs. Donna A. Tefft
Telcom Insurance Services Corporation
Ms. Glenda Temple
Alanna and Hugh Terrel
Mrs. Dana L. Terrell
Carla J. and Don G. Terrell
Ms. Tracy Terrell
Mr. J. Thomas Terry
Karilyn and Jack Tevebaugh
Dr. and Mrs. Jon Tevebaugh
Leslie A. and Treynor Tevebaugh
Mr. Andrew Tevington
Texanna Lady Crafters Inc.
Dorothy and Udho Thadani
Mr. and Mrs. Ross W. Thanscheidt
Mr. and Mrs. Mike Thedford
Jana and Kevin Thiesing
Mr. and Mrs. Terry Thiessen
Mrs. Vi Thomas
Ms. Bonnie J. Thomason
Mrs. Judy D. Thomason
Ms. Karen K. Thomason
Mr. and Mrs. Charles Thompson
Lila and Curtis Thompson
Ginger and David Thompson
Mr. and Mrs. Doyle A. Thompson
Kay and Gary J. Thompson
Ms. Helen H. Thompson
Mr. and Mrs. M. E. Thompson, Jr.
Mrs. Margaret M. Thompson
Mr. and Mrs. Mark R. Thompson
Miss Melissa S. Thompson
Barbara H. and Ralph G. Thompson
Mrs. Shelby F. Thompson
Linda and Steve A. Thompson
Mr. Tommy Thompson
Mr. and Mrs. Bill W. Thompson

The Thompson Girls
Judith A. and Ronald L. Thornburg
Mrs. Marilyn Thorp
Betsy and Robert S. Thorpe
Tiger Trucks Inc.
Ms. Diane Timmersman
Mrs. Jo Tiner
Dr. Robert Leo Tiner
Tinker Federal Credit Union
Ms. Leslie G. Tippett
Gayle and Floyd Tipton
Claudia M. and David E. Todd
Donna S. and Bill R. Toellner
Ms. Cathy Tolen
Anne D. and Wayland Tolle
Ms. Rena S. Tollison
Mr. and Mrs. Martin R. Tomson
Sherry L. and Lonny H. Towell
Mr. Curtis K. Towery
Mr. and Mrs. Ron E. Townsden
Mrs. Renate I. Trapkowski
Travelers Midwest Construction
Mr. Floyd J. Travis
Mrs. Laquetta A. Travis
Connie and Mike Travis
Ms. Mollie G. Treadway
Yvonna L. and James R. Treas
Ms. Peggy Ann Tredway
Denise and Mike Tribbey
Tribbey Alumni Association
Triple J Family Farms, LLC
Janine and Ralph Triplett, Jr.
Mrs. Ann T. Trost
Mr. Louis F. Trost
Kay D. and Jeff C. Troutt
Mr. and Mrs. Bill D. Truman
Hulda M. and Thomas E. Trumbla
Mariellen Jones and Gar. L. Trumble
Ms. Linda C. Tucker
Tuesday Bridge Group
Dennis and Debra Tull
Ms. Angelina D. Tumberlinson
Lynne and Paul Turcott
Ms. Gloria J. Turley
Carmelita and Alvin O. Turner
Miss Betty Turner
Debby K. and Steve P. Turner
Charla A. and Tim Turner
Ms. Kimberly D. Turney
Linda P. and Eric T. Tutwiler
Mr. and Mrs. Thomas Tutwiler
Barbara L. and Ralph W. Tyler, Jr.
Mr. D. Paul Tyson
The U. S. Charitable Gift Trust
U. S. Grant High School Alumni Class of 1956
UBS Employee Giving Program
Mr. and Mrs. Tom Uhlenhake
Ms. Ruth A. Underwood
UniBridge Systems, Inc.
United Way of the Bay Area
Marsha and M. Dean Unruh

Ms. Angelia G. Upchurch
Mr. and Mrs. James A. Urice
Mr. and Mrs. Bill A. Utterback
Mrs. Adeline O. Vaill
Ms. Karlinda S. Valadez
Valley Christian Church
Ms. Margaret L. Vallion
Valve Tech Laboratory Employees
Mr. E. K. Van Eman, Jr.
Mr. and Mrs. Reece M. Van Horn
Mr. and Mrs. Guy D. Vanderslice
Mickey Vanderwork Farm
Mr. Lawrence VanDusen
Mr. Mark A. Vasquez
Ms. Nellie F. Vaught
Sharon L. and John L. Veach
Mr. and Mrs. Samuel J. Veazey
Mrs. Heather Vick
Mrs. Ruth J. Vierra
Nancy K. and John D. Villines
Mary and Mark Virden
Mr. Victor B. Virts
Vision Bank
Mrs. Ruby S. Vocke
Mr. and Mrs. Bob E. Vogle
Mr. Kevin Von Tungeln
Mr. Louis Von Tungeln
Mrs. Beverly Jane Voth
Frieda M. and J. C. Voyles
Jaurita and Jack Voyles
Brenda P. and Matt W. Waack
Mrs. Carolyn J. Wade
Cindy and Joe M. Wade
Kay and Lamar Wade
Jeanie and Larry Wade
Mr. and Mrs. M. R. Wager
Shirley and David Wagner
Donna and John Gene Wakefield
Mrs. Dorothy J. Waldron
Ms. Bonnie J. Waldrop
Ms. Bess E. Walker
Jackie and Don Walker
Mr. Ed Walker
Ms. Iva Nell Walker
Ms. Johnna R. Walker
Beverly H. and Larry A. Walker
Ms. Marilyn K. Walker
Jan and Randy Walker
Virginia and Ray Walker
Agnes and Robert M. Walker
Nancy and Robert Walker
Mrs. Vynetta Walker
Mrs. Yvonne Walker
Jeanette R. and Don Walkup
Mr. and Mrs. Barry Wallace
Mr. and Mrs. Gene Wallace
Ms. Marjorie A. Wallace
Mrs. Ruth Wallace
Mr. and Mrs. James A. Walling
Mrs. Betty L. Walls
Carolyn R. and Max G. Walter

Mrs. Carlita Walters
Mr. Jimmy D. Walters
Mr. Michael Walters
Mr. and Mrs. Evert A. Walton
Ms. Alice Waltrip
Mr. and Mrs. Richard B. Walworth
Mr. Lai Wang
Janet and Max Wanger
Sharon K. and Gary Ward
Jeanette and Jim C. Ward
Ms. Jimmie Lou Ward
Ms. Marion R. Ward
Ms. Marion S. Ward
Nelda and Mick Ward
Mr. Lee Warden
Mrs. Mary K. Warden
Pam and Nathan Warden
Ms. Ann L. Wariner
Jami D. and Kent Warkentin
Joy A. and Bill J. Warner
Jan L. and Clarence E. Warner
Sue and Wayne L. Warren
Kelly L. and Joe S. Warrick
Washington Elementary School
Mr. and Mrs. Jim Waters
Ms. Carol Watkins
Mrs. Lynda C. Watkins
Janna Z. and Max D. Watkins
Mrs. June J. Watts
Miss Patricia Wayman
Ms. Melanie Wayne
Ms. Kim R. Wearmouth
Mr. and Mrs. Wesley Weast
Ms. Carol Weaver
Mr. and Mrs. Doug Weaver
Darla K. and John W. Webb
Mr. Joseph Webb
Mr. and Mrs. Billy J. Webb
Mrs. Nancie C. Webb
Mr. and Mrs. Richard M. Webber
Mrs. Floris B. Weber
Wednesday Morning Bible Class
Ann L. and E. C. Wegener
Julia and Rex Weigand
Mrs. Judy A. Weinkauff
Sally K. and Stephen P. Weise
Ms. Mary E. Weiser
Sonja S. and Jim Weisgerber
Ms. Regina Kay Wellman
Margaret H. and Bill Wells
Nancy L. and Dennis K. Wells
Mr. and Mrs. Ron O. Wells
Mrs. Johnnie R. Welty
Karan and George Wensowitch
LaVonda and Don L. Wentworth
Ms. Pam Werner
Gail and Ted M. Wernick
Grace L. and Darrell L. Wessels
Mr. and Mrs. Bryan A. West
Ms. Shirley A. West
West Ark Church of Christ

Peggy O. and Harold W. Westfahl
Janice and Larry Whaling
Le A. and Jack Wheat
Mrs. Cheryl A. Wheelbarger
Pansy and Darby Wheeler
Mrs. Jeanne Wheeler
Mr. Harold L. Whipple
Jo An and Dean Whisler
Ms. Olivia Whitaker
Ms. Rosemary Whitaker
Jan S. and Charles R. White
Mrs. Dolores K. White
Mrs. Linda K. White
Mrs. Priscilla White
Buford White Lumber Company, LLC
Mr. Kirk Whitman
Barbara and Richard L. Whittaker
Kelli and Alan Whittington
Mr. and Mrs. Darrel C. Whitton
Whitworth Sunday School Class
Patricia and Jerry L. Widney
Mrs. Shirley L. Wiedemann
Barbara A. and Wayne L. Wiersig
Wiggins Auctioneers, LLC
Ms. Lucile Wilcoxon
Mr. and Mrs. Ort B. Wilcoxon
Mrs. Marlene L. Wilczek
Kim A. and Ronnie Wilczek
Debbie and Tim Wild
Kendall Wildman
Diane Davis and Jack Wiley
Ms. Marjorie A. Wilhelm
Nadine R. and Frank Wilkerson
Susan and Sonny Wilkinson
Mrs. Aerial L. (Ave) Williams
Mr. and Mrs. Bill A. Williams
Suellen and Bruce Williams
Gisela and Carl E. Williams
Ms. Debbie Williams
Mr. and Mrs. Gary C. Williams
Ruth M. and Gary M. Williams
Ms. Janice S. Williams
Alberta S. and John L. Williams
Theleta and Larry Williams
Ms. Laurita F. Williams
Alma L. and Len Z. Williams
Ms. Lonnie F. Williams
Mrs. Mary Beth Williams
Mr. and Mrs. Robert P. Williams
Ms. Sandra S. Williams
Julie G. and Scott Williams
Kathy J. and Steve L. Williams
Mrs. LaRue Williamson
Gwen and Bruce Willingham
Mrs. Mary L. Willingham
Mrs. Connie L. Wilson
Mr. and Mrs. Greg Wilson
Lucille R. and Keith L. Wilson
Ms. Mary A. Wilson
Ms. Norma J. Wilson
Mrs. Pauline L. Wilson

Ms. Shirley A. Wilson
Mrs. Wenonah Wilson
Ruth Wilson Hurley Manor Volunteers
Wilson, Cain and Acquaviva
Mrs. Carla J. Wimberly
The Honorable James Winchester and
Representative Susan Winchester
Mr. and Mrs. Jake Winter, Jr.
Mrs. Ruth D. Winter
Mrs. Sue Winterringer
Mrs. Rhonda Winters
Linda J. and Mike O. Witt
Mary Jane and Bill Wittrock
Ms. Karma Wolf
Russ and Suzy Wolfe
Ms. Maerita R. Wolverton
Mrs. Ellie Womack
Wonderful Giving
Alice and Bob G. Wood
Mrs. Charlotte A. Wood
Mrs. Cindy Wood
Mr. and Mrs. DeWayne C. Wood
Mrs. Dottie Wood
Ms. Eleanor J. Wood
Mr. Gary Charles Wood
Mr. Jimmy D. Wood
Mrs. Paris Wood
Ms. Virginia Wood
Mrs. Terri J. Woodbury
Mr. Donald L. Woods
Mrs. Maxine L. Woods
Terry and Kelvin Woods
Woods County Abstract Corporation
Mary Ann and David A. Woodward
Nan R. and Mike Woody
Jodie L. and Brad Wooten
Mr. and Mrs. Bruce L. Worley
Ms. Wendi Esposito Worthington
Mr. and Mrs. A. W. Wright II
Mr. and Mrs. Clifford Wright
Sallie and John A. Wright
Kelley and Michael P. Wright
Mr. Mike Wright
Mrs. Sandra C. Wright
Ms. Sue Wright
Miss Betty P. Wunder
Mr. and Mrs. Wayne Wunderlich
Mr. John Wustenberg
Mr. and Mrs. Dean Wyatt
Mr. and Mrs. Richard Wyatt
Mr. and Mrs. Mitchell Wyatt
Ms. Suanne M. Wymer
Wymer Brownlee Wealth Strategies
Mrs. Karen Wynn
Ms. Darlene Wynne
Lynn and Travis Yadon
Lila M. and James L. Yahola
Debra and Joe Yalch
Sharon J. and Bill A. Yeager
The Yossarians
Ms. Cindy Yost

Donna and Harvey D. Yost II
Ms. Carol J. Young
Mr. and Mrs. Robert A. Young
Ms. Charlene D. Young
Jimmie N. and Joe W. Young
Ruth Ann and Joe A. Young
Laura and Lee W. Young
Ms. Leslie Young
Lorinda and Greg Young
Mrs. Mary C. Young
Dee A. and Ronald D. Young
Mr. Stanley K. Young
Ms. Vicki Young
Ms. Mary L. Younkins
Ms. Sherry Yount
Ms. Kaye Zachary
Mr. and Mrs. Don T. Zachritz
F W Zaloudek and Sons
Mr. August F. Ziegler
Ms. Jan L. Zimmerman
Ms. Kimberly Zimmerman
Ms. Sylvia M. Zimmerman
Ms. Jo Anne Zingo
Kim and Gaylon Zissa
Mindy D. and Dale A. Zook
Ramona R. and Dr. Sattar M. Zubaidi
Jane and Jack E. Zumwalt
Mr. and Mrs. Loran Zweacker
Mrs. Marsha S. Zwiebel

BOARD OF DIRECTORS

Leigh Ann Albers
Oklahoma City, OK

The Hon. Bill Anoatubby
Ada, OK

Sharon Bell
Tulsa, OK

Bruce Benbrook
Woodward, OK

Lance Benham
Estes Park, CO

Elizabeth Blankenship*
Oklahoma City, OK

Jil Boghetich
Oklahoma City, OK

Barbara Braught
Duncan, OK

Randy Brown, M.D.
Oklahoma City, OK

Ellen Burgess
Tulsa, OK

C. Michael Carolina
Edmond, OK

Len Cason (Chair)
Oklahoma City, OK

Michael Cawley
Ardmore, OK

Hiram Champlin
Dallas, TX

J. Markham Collins, Ph.D.
Tulsa, OK

Ramsey Drake
Oklahoma City, OK

J. Walter Duncan IV
Edmond, OK

William Durrett*
Oklahoma City, OK

The Hon. Claire Eagan
Tulsa, OK

Carl Edwards
Oklahoma City, OK

Christy Everest
Oklahoma City, OK

Tricia L. Everest
Oklahoma City, OK

Ann Felton
Oklahoma City, OK

C. Kendric Ferguson
Altus, OK

Malinda Berry Fischer*
Stillwater, OK

Mark Funke
Edmond, OK

Gerald Gamble
Oklahoma City, OK

John Griffin
Tulsa, OK

Virginia Groendyke
Enid, OK

Jacqueline Haglund
Tulsa, OK

Brooks "Boots" Hall
Oklahoma City, OK

V. Burns Hargis
Stillwater, OK

Judy J. Hatfield
Oklahoma City, OK

William Hawley, M.D.
Oklahoma City, OK

Kim Henry
Edmond, OK

Randy Hogan
Oklahoma City, OK

The Hon. Jerome Holmes
Oklahoma City, OK

Cliff Hudson
Oklahoma City, OK

Ronnie K. Irani
Oklahoma City, OK

Brett Jameson, M.D.
Stillwater, OK

Wm. O. Johnstone
Oklahoma City, OK

J. Michael Kelly, M.D.
Oklahoma City, OK

The Hon. Terence Kern
Tulsa, OK

Lou Kerr
Oklahoma City, OK

Harrison Levy, Jr.
Oklahoma City, OK

Dan V. Little
Madill, OK

William Loughridge, M.D.
Tulsa, OK

Mindy Mahaney
Bristow, OK

Jack McCarty
Newkirk, OK

Frank McPherson*
Oklahoma City, OK

James Morris II
Oklahoma City, OK

J. Larry Nichols
Oklahoma City, OK

Richard Parry
Oklahoma City, OK

Rebecca Patten
Norman, OK

Bond Payne
Oklahoma City, OK

Don Pitman*
Tulsa, OK

Barry Pollard, M.D.
Enid, OK

David Rainbolt
Oklahoma City, OK

H.E. Rainbolt*
Oklahoma City, OK

Dee Replogle, Jr.
Oklahoma City, OK

Pat Rooney
Oklahoma City, OK

Robert Ross
Oklahoma City, OK

Michael Samis
Oklahoma City, OK

John Saxon III, M.D.
Muskogee, OK

Paul Schulte
Kingfisher, OK

Phyllis Stough
Oklahoma City, OK

Ross Swimmer
Tulsa, OK

Becky Switzer
Norman, OK

The Hon. Steven Taylor
McAlester, OK

Betsy Thorpe
Edmond, OK

Greg Walton, M.D.
Edmond, OK

Rainey Williams, Jr.
Oklahoma City, OK

Sarah E. Yauk
Buffalo, OK

***LIFE DIRECTOR**

NATIONAL ADVISORY COUNCIL

Greg Allen
Charlottesville, VA

William M. "Bill" Cameron
Oklahoma City, OK

Don V. Cogman
Scottsdale, AZ

Fred J. Hall (Vice Chair)
Oklahoma City, OK

Blake Hogan
Houston, TX

Cathy Keating
Oklahoma City, OK

Christian Keesee
New York City, NY

Whitt Lee
Salt Lake City, UT

Larry Nichols, Chair
Oklahoma City, OK

Don Nickles
McLean, VA

Chris Perkins
Austin, TX

Ronald A. Rosenfeld
Arlington, VA

John F. "Sandy" Smith
Atlanta, GA

William H. Stoller
Tualatin, OR

Richard D. Story
New York City, NY

Arthur Swanson
Oklahoma City, OK

Jay Wohlgemuth, M.D.
San Juan Capistrano, CA

Joe Wright
New York City, NY

AMBASSADORS

Paul Cason
Oklahoma City, OK

Elizabeth Farabee
Oklahoma City, OK

Matt Farris
Tulsa, OK

Davis Hudiburg
Edmond, OK

Caroline Cameron Ikard
Oklahoma City, OK

Josh Leffler
Duncan, OK

Travis Mason
Oklahoma City, OK

Rit Mathis
Oklahoma City, OK

Jack McClendon
Oklahoma City, OK

Mollie Bennett McCurdy
Oklahoma City, OK

Whitney Rainbolt
Oklahoma City, OK

Eitan Reshef
New York, NY

Patrick D. Rooney
Tulsa, OK

Julie Shelley
Oklahoma City, OK

Tyler Ward
Oklahoma City



825 N.E. 15TH STREET
OKLAHOMA CITY, OK 73104



Non-Profit Org
U.S. Postage
PAID
Permit No 639
Oklahoma City, OK