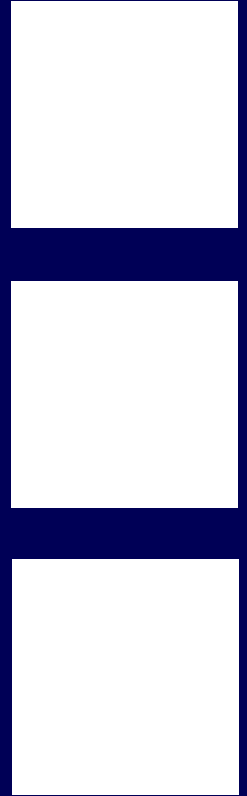


A N N U A L R E P O R T



OKLAHOMA MEDICAL
RESEARCH FOUNDATION

2005
the year
in giving

The Oklahoma Medical Research Foundation began as the dream of a group of Oklahoma physicians.

These were practitioners, people who spent their lives battling sickness and disease on the front lines. But as they fought day after day to repel the same scourges—tuberculosis, heart disease, cancer—they came to understand that it was not enough simply to

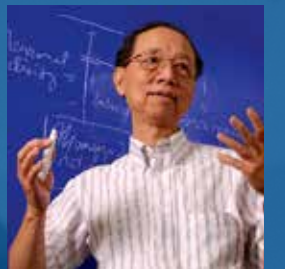


treat the sick. To make real headway against disease, they realized, medicine had to do more. It had to pinpoint the causes of illness and discover new ways to treat and prevent deadly diseases.

So in 1946, those visionaries founded an institute where scientists could devote their entire careers to rooting out the causes of human disease:

the Oklahoma Medical Research Foundation.

Six decades later, those physicians would barely recognize their creation. With over 600 staff members, including some of the world's foremost immunologists and cardiovascular biologists, OMRF has become one of the nation's leading independent medical research institutes. Along the way, our scientists have done more than explore the mysteries of human disease—they have helped develop medications that fight deadly illnesses. They have saved lives.



A Cure Is Out There

Four seasons. 365 days. 525,600 minutes.

The ways to measure a year are as numerous as the seconds in that year. Yet no two methods tell quite the same story.

For the Oklahoma Medical Research Foundation, there is no single way to gauge the success of a year. The work our scientists do is mind-bogglingly complex, and the “success” or “failure” of a particular course of research is not readily apparent. Take, for example, the research of Dr. Charles Esmon.

In the 1980s, Dr. Esmon made a series of discoveries about how blood coagulates. At first, only a select group of experts in the field of cardiovascular biology recognized the significance of his work. But over time, its importance became clearer and clearer to an ever-widening audience: biomedical scientists in other fields, pharmaceutical companies, physicians and, finally, patients. Today, those discoveries have been transformed into a pair of life-saving drugs.

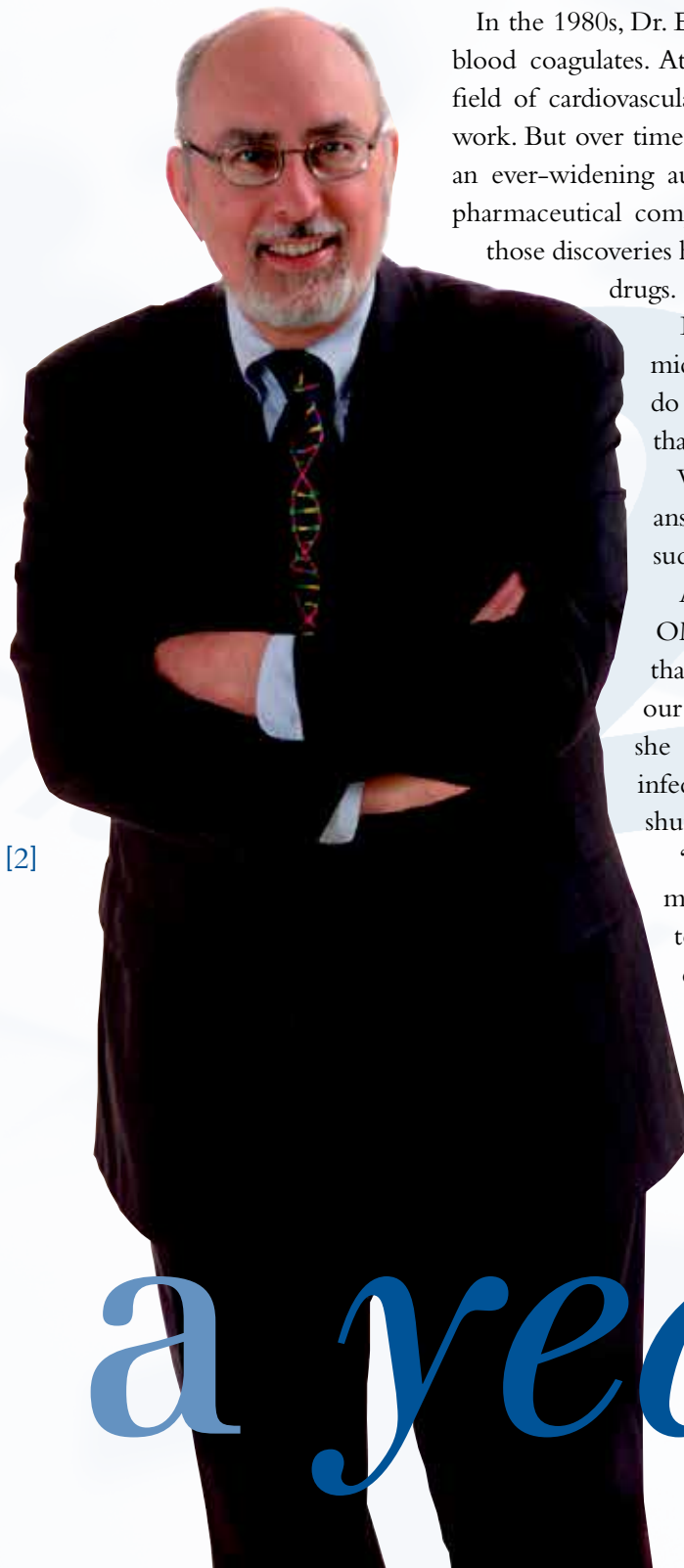
But when did those discoveries move from the middle of the pack to the winner’s circle? And how do you reduce such milestones to a simple figure that can be entered on OMRF’s balance sheet?

Well, for Jeanne Morgan, at least one of those answers is simple: Dr. Esmon’s work became a success the moment it saved her life.

Although she worked across the street from OMRF for many years, it wasn’t until 2005 that we were lucky enough to meet Jeanne. At our annual honors and awards banquet in April, she told about how sepsis—an often-fatal blood infection—had taken her to the brink of death, shutting down her heart, liver, kidneys and lungs.

“A do-not-resuscitate order was attached to my bed, and everyone was just waiting for me to die,” she said. “Then the infectious disease doctor ordered Xigris for me.” The drug,

**[How do you
measure the success
of OMRF in 2005?]**



which has its roots in the work of Dr. Esmon and his OMRF colleague Dr. Fletcher Taylor, is the only FDA-approved treatment for severe sepsis, which kills more than 200,000 Americans each year. “The doctor knew Xigris was my only hope, and it saved my life. I’m here today because of Dr. Esmon and Dr. Taylor.” There were few dry eyes in the house.

It was moments like this that made 2005 a year to remember. But it was just the tip of the iceberg.

In 2005, a revolutionary stroke drug based on the work of OMRF’s Dr. Robert Floyd progressed in worldwide clinical trials. Drs. Paul Kincade and Rosana Pelayo made a major breakthrough when they discovered two new types of cells in the immune system, while Dr. Gary Gorbsky identified a potential key player in the development of cancer. Led by Drs. Linda Thompson and Judith James, OMRF also secured a major contract to study why the flu vaccine fails to protect certain people with compromised immune systems. Still, when I think back on 2005, I always return to the people who made our work possible. Last year, we received more than 10,000 individual gifts. That may be the truest measure of our success.

On the pages that follow, you’ll meet some of the donors who opened their hearts to OMRF in 2005. You’ll

learn who they are and why they give to OMRF. In the process, you’ll see that our donors come in all shapes and sizes, all age groups and tax brackets.

You’ll also read about our new *Imagine* Campaign. This \$100 million fundraising effort will be crucial to our continued growth and success. But we cannot reach our goals without your help.

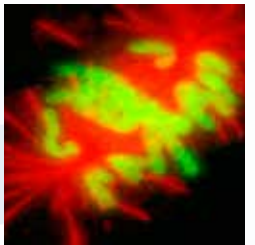
To all who have already joined OMRF’s philanthropic team, I offer my heartfelt thanks. I hope you will continue to partner with us in the search for treatments and cures. And for those who have not yet supported OMRF, please consider a donation.

For every gift you make to OMRF, you’ll earn a tax credit worth that amount (up to a total credit of \$1,000 for individual taxpayers or \$2,000 for taxpayers filing a joint return). Learn more at www.OMRF.org/taxcredit.

With your generosity, OMRF will continue to open gateways to discovery. To fight disease. To touch lives. To succeed, by any measure.

Imagine all that we can do together.

President



[2]

[3]

a year in the life

January

April

July

October



The OMRF Tax Credit Takes Effect

Thanks to a new law, donors now receive a 50 percent state tax credit on their gifts to OMRF (up to a total credit of \$1,000 for individuals and \$2,000 for taxpayers filing jointly).

February Kicking off the *Imagine* Era

OMRF launches its *Imagine* Campaign, a seven-year, \$100 million fundraising effort that will pave the way for a new era of growth and discovery at the foundation.



OMRF Stroke Drug Shows Promise

Cerovive, a revolutionary stroke medication based on the work of OMRF's Dr. Robert Floyd, makes progress in worldwide clinical testing.



An Elegant Tradition Begins

Oklahoma First Lady Kim Henry, along with former First Ladies Cathy Keating, Rhonda Walters, Donna Nigh and Ann Bartlett, host the Inaugural First Ladies Gala to benefit OMRF. The watershed event draws over 400 guests and raises \$300,000 for OMRF's graduate student education programs.



50th Class of Fleming Scholars Arrives

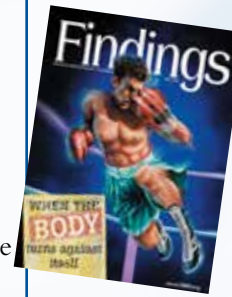
OMRF welcomes 13 of the state's most talented high school and college science students, who spend eight weeks working one-on-one with OMRF researchers.

OMRF Scientists Win Major Flu Contract

Led by Drs. Linda Thompson and Judith James, OMRF secures a five-year contract with the National Institutes of Health to study why certain people fail to make proper immune responses to the influenza vaccine.

Gorbsky Discovers Potential Key Player in Cancer

OMRF's Dr. Gary Gorbsky publishes a groundbreaking paper identifying a cellular process that could prove crucial to the onset and treatment of cancer.



Findings Takes Home the Blue Ribbon

OMRF's magazine wins the Silver Quill award as the best magazine in the International Association of Business Communicators' 16-state Southwest region.

Harley Honored for His Research

The National Institutes of Health presents its M.E.R.I.T. (Method to Extend Research In Time) Award to Dr. John Harley, recognizing the physician-scientist's quarter century of groundbreaking lupus research at OMRF.



July Another Four-Star Year

OMRF receives the highest possible rating from Charity Navigator, the world's largest charity evaluator. OMRF has earned four stars from Charity Navigator every year since the service began rating charities in 2001.



2005: a year to remember

Three decades ago, cancer struck hard in the Putnam City Schools: In a single year, five teachers and an administrator from this northwest Oklahoma City district were all diagnosed with the disease. Lois Thomas, then a journalism teacher at Putnam City High School, decided she

of the funds would go to research. That's why every penny we've ever collected has gone to OMRF."

And there have been quite a few pennies. The effort now encompasses everything from fairs and bake sales to powder puff football games and beach volleyball marathons. The proceeds from these events have purchased a vast array of lab equipment at OMRF, including high-powered microscopes, centrifuges and incubators. They even established an endowed chair—the Putnam City Schools Distinguished Endowed Chair in Cancer Research.

2005 marked the 30th anniversary of this one-of-a-kind philanthropic partnership, which has raised a remarkable \$2.4 million to support cancer research at OMRF, including \$125,000 last year.

"It thrills me to see the dedication that these young people display year after year," says Thomas. "My dream is that kids across America will catch this vision."

needed to take action. "I remembered as a kid when President Franklin Roosevelt asked us to collect nickels and dimes for polio," says Thomas, now 87 and retired from teaching. "When polio was conquered, I felt I was part of the solution. So I thought, let's do the same thing with cancer."

Led by Thomas, an army of Putnam City students was soon waging war on cancer, one cup of coins at a time. When word of the campaign spread, Thomas was deluged with calls from charities hoping to benefit from the district's efforts. But, she says, one organization stood out from the crowd. "The Oklahoma Medical Research Foundation pledged that all



[6]

[7]

A tradition of fighting cancer

["My dream is that kids across America will catch this vision."]

Lois Thomas (right) at the Putnam City North High School Cancer Carnival with P.C. North student Jamia Rowland



For some businesses, it's all about the bottom line. But for Oklahoma's largest natural gas distributor, success is about much more than dollars and cents.

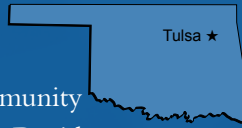
"At ONEOK, we try to give back to the people we serve through our Community Investment Program," says David Kyle, chairman, president and chief executive officer of the Tulsa-based company. Through carefully selected grants to nonprofits, the program aims to enhance the quality of life in the communities where it operates and where its employees live and work. "We see these contributions as more than gifts to charity—these are investments that will pay human dividends for untold years to come."

to vitamin E—can protect the aging brain against Alzheimer's disease.

"We were extremely impressed with Dr. Hensley and the unique approach he is taking in the battle against Alzheimer's," says Ginny Creveling, executive director of the ONEOK Foundation. "This is a disease that already affects almost five million Americans, and that number is only going to grow. So this grant fits our 'impact giving' philosophy perfectly—it's a contribution that will make a significant difference in helping the greatest number of people."

Kyle hopes that ONEOK's grant will help Dr. Hensley make headway against the deadly brain disease. But he also sees another important benefit that could flow from the grant. "We hope that our contribution will serve to encourage other corporate donors, particularly those in the Tulsa area, to support OMRF. Because a contribution to OMRF is a contribution to the health of Oklahomans and people everywhere."

In 2005, ONEOK made one of those investments in OMRF, awarding a \$50,000 grant to fund the work of Dr. Kenneth Hensley. Dr. Hensley will use the grant to study whether tocopherols—substances closely related



[8]

Investing in a

[9]

healthier future

"We see these contributions as more than gifts to charity—these are investments that will pay human dividends."

Ginny Creveling, Executive Director of the ONEOK Foundation, with David Kyle, President and CEO of ONEOK



It's impossible to miss the signs up and down Sixth Street. Since Dick Bailey opened the doors to his new-car showroom in 1950, Okmulgee residents have looked to him and his son Mike to fill their automotive needs.

Dick Bailey Motors stands as a fixture in this community of 13,000, and the Baileys know virtually everyone in town. The folks who drive vehicles off the lot are more than customers—they're friends.



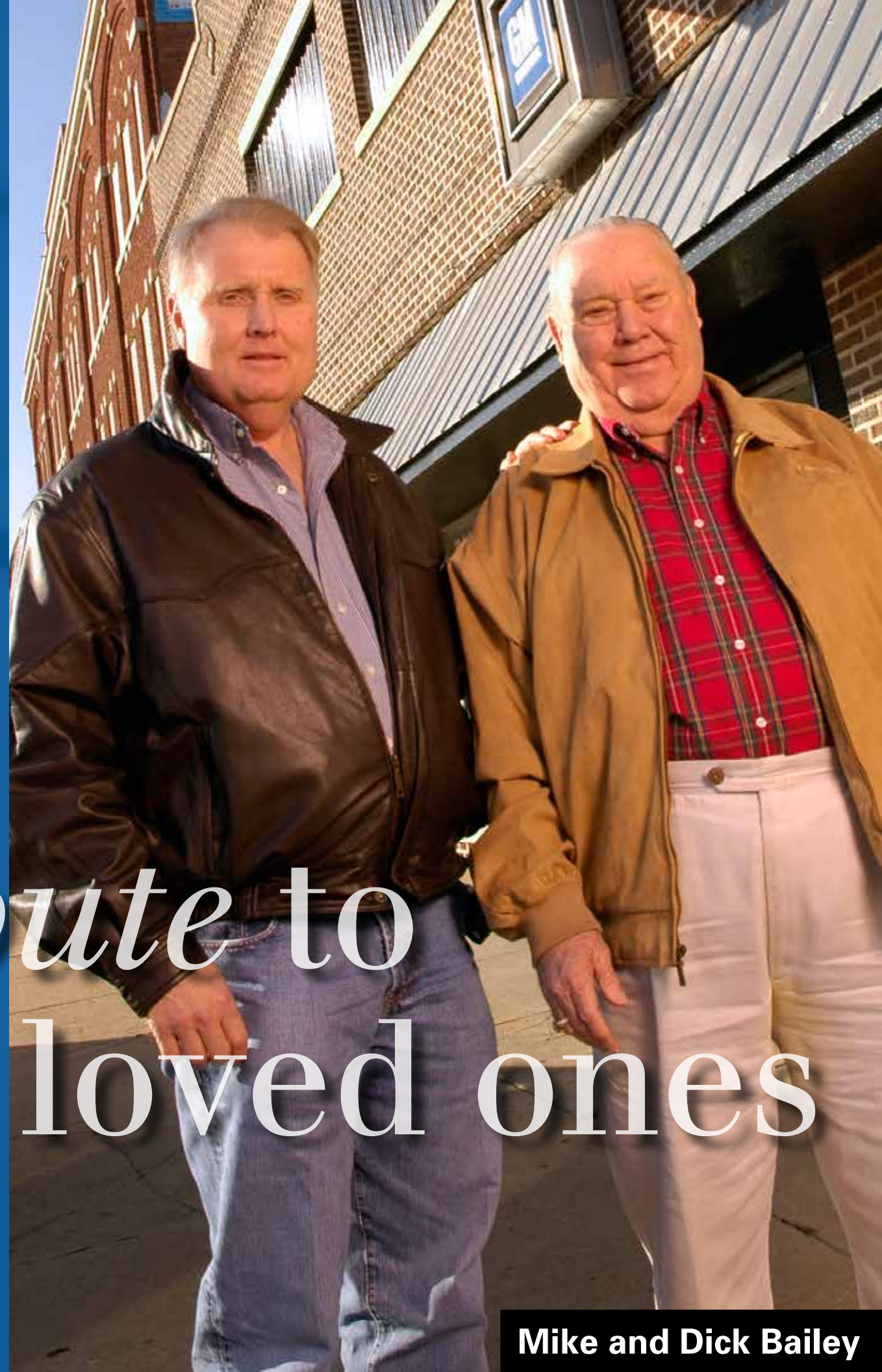
So it's no surprise that when customers lose a family member, the Baileys reach out to them. For two decades, they have sent gifts to OMRF in memory of those loved ones—donations that will translate into health restored and lives saved.

Dick and Mike Bailey know these gifts matter, both to remember lost loved ones and to support research. "We believe in OMRF," says Mike. "OMRF puts a lot of good back into our community and our state, even our world."

This giving tradition grew from seeds planted by Okmulgee CPA S. Graham Smith, a long-time member of OMRF's board of directors. As Bailey Motors' accountant, Smith mentored the younger Bailey to share his success by supporting meaningful causes, things that would help people. Smith suggested that the Baileys make memorial gifts to OMRF, and both father and son knew it was the right thing to do.

By Mike Bailey's estimation, they make at least two memorial gifts each week. With a customer base that includes thousands of people in Oklahoma and several surrounding states, those tributes touch families not only in this state, but also throughout the Midwest.

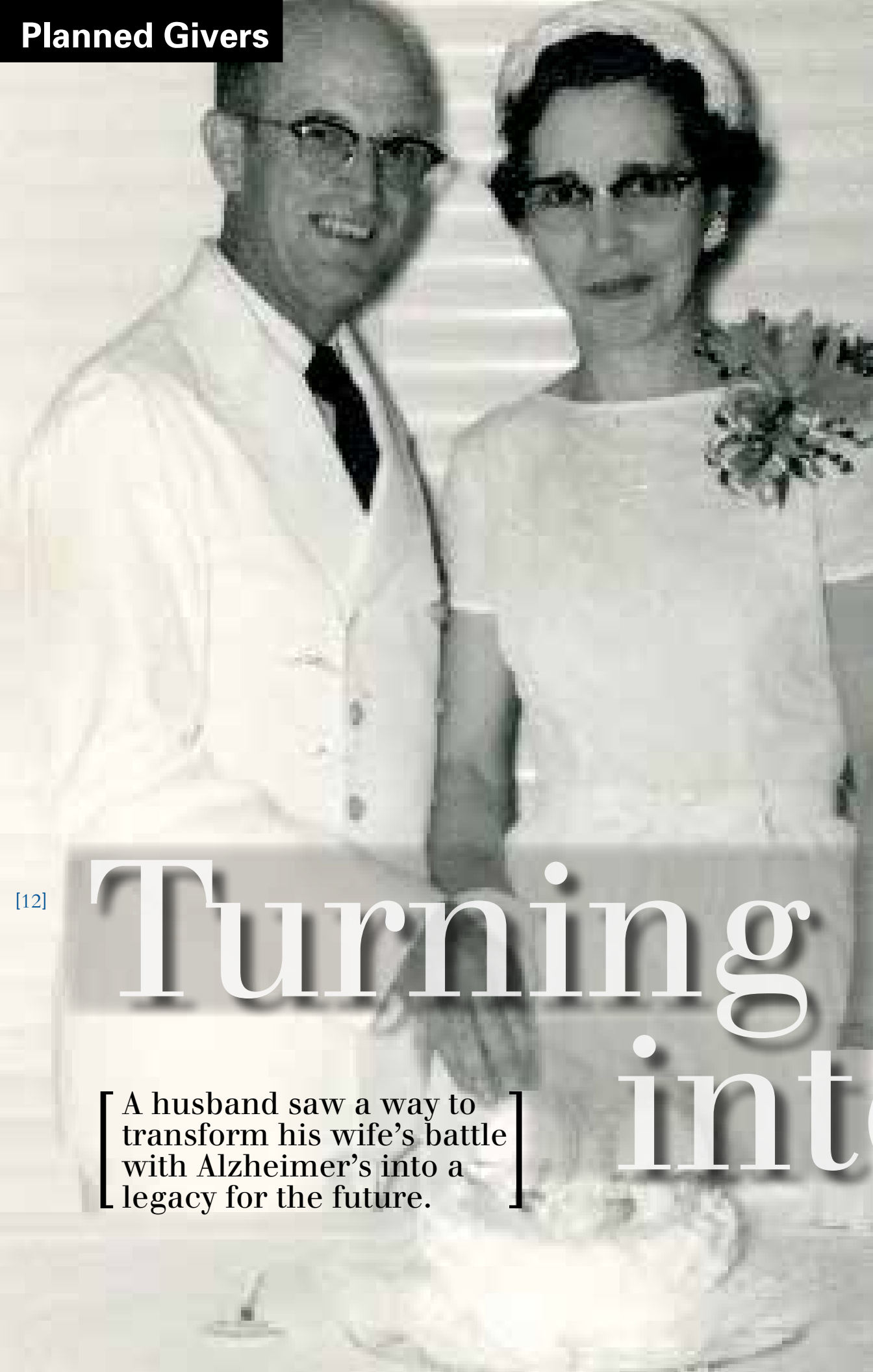
The Baileys have suffered losses of their own, so they fully understand the value that memorial gifts hold. "Flowers are nice, but in two or three days, they're gone," says Mike. "When we give to research, it really means something."



[10] Paying *tribute* to lost loved ones

["Flowers are nice, but when we give to research, it really means something."]

Mike and Dick Bailey



Ten dollars here. Fifty dollars there. Since the mid-1980s, Byron and Kathy Strawn had supported the Oklahoma Medical Research Foundation. Their gifts came regularly, and over the years they added up to \$330.

Still, those modest donations offered little clue as to the generosity the Norman couple would show to OMRF upon their deaths.

Unbeknownst to OMRF, the Norman couple—who had no children—made OMRF the sole beneficiary of their estate. That gift, which OMRF received in 2005, totaled \$700,000. At the Strawns’ request, OMRF will use the donation to fund Alzheimer’s disease research.

The Strawns decided to make the gift soon after Mrs. Strawn was diagnosed with Alzheimer’s in 2001. “They didn’t have any children, and they thought it was the right thing to do with their savings,” says Jim Hoover, the Strawns’ nephew and the executor of their estate. “Ultimately, they hoped their gift would help find a cure for Alzheimer’s.”

Mrs. Strawn grew up in Purcell, the youngest of 13 children in a farming family. Mr. Strawn, a Missouri native, was a naval aviation photographer who survived the Pearl Harbor bombing. The couple met in the late 1950s, when Mr. Strawn was stationed in Norman.

They were wed in 1959 and shared a love for gardening and travel. Though neither attended college, both were avid University of Oklahoma fans. They lived directly across the street from OU’s Sam Noble Museum of Natural History, and Mr. Strawn took a particular interest in “supervising” the museum’s construction on a daily basis from 1996 until completion in 2000.

“When the job was finished, the builders presented him with an honorary hard hat for his ‘contributions’ to the project,” recalls Mr. Hoover, smiling.

At OMRF, the Strawns will live on through the medical advances made possible by their donation. Led by Dr. Jordan Tang, OMRF researchers have identified the enzyme believed to cause Alzheimer’s disease and have created a chemical inhibitor that stops the enzyme’s action. Tang’s team hopes to begin testing an experimental Alzheimer’s drug in humans in the near future. And thanks to the generosity and foresight of the Strawns and others like them, that hope should soon become a reality.



[12]

Turning *hope* into reality

[A husband saw a way to transform his wife’s battle with Alzheimer’s into a legacy for the future.]

[13]

“Dear. Dr. Capra,” the letter began. “I’m Aubrey Lake, and I am in the 3rd grade.” The print was large, the letters carefully shaped. “We learned about Martin Luther King Jr. We wrote a story telling our dreams. One of my dreams was for there to be a cure for diseases. That is why I did this for the foundation.”

What Aubrey did was to show generosity and kindness beyond her 9 years. With her letter, she enclosed a check to the Oklahoma Medical Research Foundation. “I did a garage sale to raise this money for OMRF,” her letter continued. “My friend Caitlin helped... We raised \$63.90 out of the whole entire thing. I plan to do a bigger thing next time since I did so well. Your friend, Aubrey Lake.” In the bottom, right-hand corner of the page, there was a P.S. “Please write back.”

And Dr. Capra did write back. “I am personally writing to thank you for the wonderful gift you and your friend

Caitlin sent to OMRF. I am much impressed that a young lady of your age organized a garage sale to raise funds to help cure disease.” The president of OMRF closed his note by inviting Aubrey and her friend Caitlin to visit him at OMRF.

When Aubrey (right) and Caitlin Villallon came to OMRF this summer, they met Dr. Capra and toured laboratories. They were quiet, shy even. They listened carefully as Dr. Capra told them about the work that OMRF is doing in an effort to make Aubrey’s dream come true.

Before the visit was over, the girls talked—but only with prompting—about their garage sale, where they’d parted with their own toys to help others. The biggest seller of the day was Aubrey and Caitlin’s prized collection of Barbies. Will they miss the dolls? “Sometimes,” said Aubrey, “but I know the money will help people.”



They have a dream

[What do Barbie dolls have to do with curing disease?]

Caitlin Villallon and Aubrey Lake

[14]

[15]

Research Programs

The **Arthritis and Immunology Research Program** concentrates on the immunology and genetics of “autoimmune” diseases—conditions in which the body turns the weapons of its own immune system against itself. These diseases, which strike primarily women, affect up to 23.5 million Americans and include lupus, rheumatoid arthritis, multiple sclerosis and scores of other conditions. The program is also home to the Lupus Multiplex Registry and Repository, the world’s largest collection of blood and tissue samples from families where more than one member suffers from lupus. This collection has served as a key resource to scientists around the globe and has helped establish OMRF as one of the world’s leaders in lupus research.

Scientists in OMRF’s **Cardiovascular Biology Research Program** investigate the fundamental mechanisms involved in blood clotting, inflammation and atherosclerosis. This work is crucial to the understanding and treatment of many life-threatening conditions, including heart attack, stroke and septic shock. OMRF’s program is home to some of the nation’s premier cardiovascular biologists,

including Oklahoma’s only member of the National Academy of Sciences. Discoveries by OMRF cardiovascular biologists have led to a pair of life-saving drugs and several experimental medicines now undergoing clinical trials.

The **Clinical Pharmacology Research Program** links basic research about diseases to clinical trials in patients. By bringing cutting-edge treatments to Oklahoma, this program provides some of the state’s sickest patients with unprecedented medical resources at no cost to them. For OMRF’s physician-researchers, these trials provide not only a means of helping Oklahomans, but they also help to shed light on the development of diseases and how to use new medications with optimal safety and effectiveness.

OMRF’s **Crystallography Research Program** provides a way for scientists to study and understand the structures of proteins that are relevant to many diseases. Using three-dimensional structures of the components of living cells, scientists gather information that allows them to build and analyze proteins that may

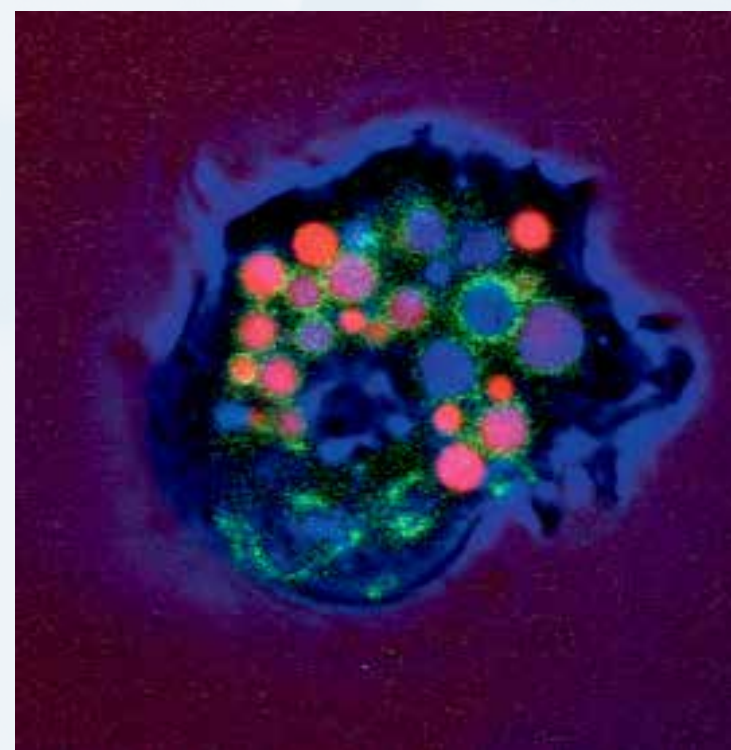
hold the key to the development and prevention of myriad human diseases, from Alzheimer’s disease to blood clotting disorders to multiple myeloma.

Scientists in the **Free Radical Biology and Aging Research Program** investigate a wide range of diseases linked to growing older. The program devotes particular attention to neurodegenerative conditions like ALS (Lou Gehrig’s disease) and Alzheimer’s, Parkinson’s and Huntington’s diseases. Scientists look at the role of free radicals—highly reactive oxygen molecules—in the development of these and other diseases typically associated with aging.

Thanks to breakthroughs made by scientists in this program, an experimental stroke drug is currently in the final phase of human clinical testing, and novel treatments for brain cancer and ALS are also undergoing preclinical testing.

OMRF’s **Immunobiology and Cancer Research Program** focuses on understanding the development and function of cells in the immune system. By pinpointing how the immune system functions under normal circumstances, scientists at OMRF are able to understand what causes this system to go awry—leading to life-threatening conditions like leukemia, lymphomas and immunodeficiency diseases. This knowledge plays a pivotal role in helping to develop therapeutics to treat all of these conditions.

Researchers in the **Molecular, Cell and Developmental Biology Research Program** study a variety of basic biomedical problems using numerous powerful model experimental systems. A potent mix of molecular and genetic tools allows investigation of complex biological processes, such as the development and function of the nervous system and the steps involved in the development of cancer, kidney disease, muscular dystrophy and autism.



As home to a multi-disciplinary group of scientists, the **Molecular Immunogenetics Research Program** is committed to understanding the development of the immune system. With special emphasis on the cells that produce protective antibodies in the blood in response to infections and vaccines, researchers focus their efforts on developing therapeutics for AIDS, cancers, infectious diseases and agents of bioterrorism.

Work in OMRF’s **Protein Studies Research Program** has contributed to life-changing breakthroughs across the biomedical spectrum. In the process of unraveling the structure of the proteins that make up the human body, they have helped develop a diagnostic test for stomach cancer, an experimental pancreatic drug for children suffering from cystic fibrosis and a crucial ingredient in the HIV cocktails that have added years to the lives of those suffering from the disease. Most recently, scientists in this program have made a series of groundbreaking discoveries about a family of enzymes believed to play a key role in Alzheimer’s disease. Those researchers are now working to transform their discoveries into a drug that will halt the action of the enzymes—and, in the process, halt the progress of Alzheimer’s disease.



[16]

[17]

Endowed Chairs

McAlester's Puterbaugh Foundation established OMRF's first endowed chair, the **J.G. Puterbaugh Chair in Medical Research**, in 1982. Puterbaugh Foundation President J.G. Puterbaugh believed in the need for a research presence in Oklahoma and spearheaded funding efforts at OMRF for many years. This initial chair has served as a cornerstone for OMRF's endowment.



J.G. Puterbaugh at OMRF's land dedication in 1947

The Chapman family of Tulsa has provided ongoing support to OMRF through trusts and endowments started in the earliest years of the foundation's existence. H.A. and Mary K. Chapman were instrumental in helping OMRF grow and prosper, and in 1985 The **H. Allen and Mary K. Chapman Chair in Medical Research** was established in honor of the late oilman and his wife.



[18] Alan C. "Ace" Greenberg endowed the **Esther Z. Greenberg Honors Chair in Biomedical Research** to honor his mother, who lived in Oklahoma City. Greenberg serves as chairman of the board of the Bear Stearns Companies, and the chair he created brings distinguished international scientists to Oklahoma to enhance existing research areas at OMRF. Through the years, more than 20 Greenberg scholars from Israel, England, Canada, Sweden, Czechoslovakia, Argentina and Australia have visited OMRF.

A dedicated member of the board of directors, Marjorie Nichlos of Chickasha made provisions for continuing research efforts at OMRF through the **Marjorie Nichlos Chair in Medical**

Research. After her death, Mrs. Nichlos' gift created this chair, which provides unrestricted funds for research needs determined by the foundation's leadership.

Tulsa attorney Bill Bell lived a life of service, devoting himself to others with great heart and energy. As a long-time OMRF board member and a trustee for the Chapman Trusts, which remain key revenue sources for OMRF today, Bell helped ensure financial stability for OMRF. **The William H. and Rita Bell Chair in Biomedical Research**, which the Chapman Trusts funded in 1988, honors Bell and his wife for their longstanding commitment to OMRF and the parts they played in its successes.



Ardmore's Lloyd Noble made his fortune as an oilman, but it was his philanthropy that made him a legend in Oklahoma. His children, through the family's Ardmore-based foundation, followed his example and have generously supported numerous capital improvement and construction projects at OMRF. In recognition of his generous spirit and to further research in cardiovascular disease, which claimed his life, the Noble family established the **Lloyd Noble Chair in Cardiovascular Research** in 1982.



As one of OMRF's earliest supporters, developer Ben Wileman gave countless hours of his time and invaluable counsel to foundation



Ben Wileman (r) with former OMRF President Colin McLeod

leaders. He served as chairman of the board from 1976 to 1982 and provided leadership on numerous steering committees and fundraising efforts through the years. Wileman and his wife earmarked their chair, the **Ben C. and Addie Mae Wileman Chair in Biomedical Research**, for support of arthritis research.

Ardmore's Merrick Foundation and the family it represents have generously supported OMRF for over half a century. Ward S. Merrick Sr. served on OMRF's board of directors from 1947 to 1965, and his daughter, Elizabeth Merrick Coe, has been a board member for over three decades. To ensure the continued success of OMRF research in diseases of aging, the Merricks endowed the **Merrick Foundation Chair in Aging Research** in 2000.



Duncan's McCasland Foundation honored its friend, trustee and first executive director W.H. Phelps and his wife, Betty, with the creation of the **W.H. and Betty Phelps Chair in Developmental Biology** in 2000. The Phelps Chair funds the study of molecular biology, emphasizing gene targeting and cancer development. The McCasland family has supported OMRF since the 1950s, and Tom McCasland's daughter, Barbara Braught, serves on OMRF's board of directors today.

For three decades, OMRF has enjoyed a one-of-a-kind philanthropic partnership with the Putnam City Schools. During that time, proceeds from annual district-wide cancer drives have purchased lab equipment and established the **Putnam City Schools Distinguished Chair in Cancer Research**—the first distinguished chair at OMRF (and the first endowed chair anywhere funded entirely by students).

Oklahoma City civic leader Lou C. Kerr created the **Robert S. Kerr Jr. Endowed Chair in Cancer Research** in 2002, on behalf of the Kerr Foundation and in the name of her husband, whose life would be claimed by cancer

two years later. The chair focuses on reducing the incidence of cancer and advancing treatment for those suffering from the disease.



In the last year of his life, philanthropist Robert S. Kerr Jr. established the **Lou C. Kerr Chair in Biomedical Research** to honor his wife, who

serves OMRF as a member of the board of directors and chair of its institutional advancement committee. Endowed by the Kerr Foundation in 2003, this chair centers on investigating diseases and disorders that afflict women. Research emphases include heart disease, the leading cause of death in U.S. women, and autoimmune diseases such as lupus and rheumatoid arthritis, whose victims are overwhelmingly female.

For more than 20 years, OMRF and Eli Lilly scientists have worked together researching blood and cardiovascular diseases. In 2001, Lilly's drug Xigris, which has its roots in discoveries made at OMRF, became the first and only FDA-approved treatment for severe sepsis. Two years later, the Indianapolis-based pharmaceutical company paid tribute to its long and fruitful relationship with OMRF by endowing a pair of **Eli Lilly Distinguished Chairs in Biomedical Research**.

In 2003, Dr. Fletcher Taylor became the first OMRF scientist to fund an endowed chair when he created the **Alvin Chang Chair in Cardiovascular Biology**. Named for his late friend and laboratory assistant, the chair was Taylor's way of saluting those he calls "the real strength" of OMRF—the lab assistants, technicians and support staff whose tireless work behind the scenes ensures research success.



Tulsa's Hille Foundation found the perfect way to support two of its charitable priorities—Oklahoma and Alzheimer's disease—when it endowed the **Hille Family Foundation Chair in Neurodegenerative Disease Research** in 2004. The chair supports research on Alzheimer's and other diseases of the brain.

[19]

Scientific Distinctions

Gifts in this area have provided a perpetual source of funding to support and honor outstanding OMRF faculty members.

The **Merrick Award for Outstanding Research** honors a junior scientist whose research is thriving. OMRF board member Elizabeth Merrick Coe and her brother, Ward S. Merrick Jr., established the award in 1981 through the Merrick Foundation.

The Merrick Foundation also provided endowed support for the **Merrick Distinguished Scientist** award in 1984.

Funded by the estate of the late Okmulgee businessman, the **James P. Hannigan Distinguished Scientist** award celebrated its 20th anniversary in 2005.

In 1987, Marylin Jones Upsher created the **Fred Jones Distinguished Scientist** award in memory of her late father, a longtime Oklahoma City automobile dealer. Upsher and her son Brooks Hall serve on OMRF's board.



Elizabeth Merrick Coe and Marylin Jones Upsher

As trustee of the James P. Hannigan estate, OMRF life director S. Graham Smith directed funds to OMRF for many worthwhile causes. In honor of his philanthropic vision, Hannigan funds created the **S. Graham Smith Distinguished Scientist** award in 1987.

The Chapman Trusts of Tulsa designated the **Chapman Fund for Special Lecturers,**

Awards and Chairs as a source for matching funds for special lecturers, awards and chairs. Since 1999, this fund has provided OMRF with greater ability to secure outstanding speakers and recruit top-notch scientists.

Dr. Patricia Capra, with her husband, OMRF President J. Donald Capra, established the **Drs. J. Donald and Patricia Capra Distinguished Scientist Fund** in 1999.

Lectureships

Endowed lectureships bring distinguished scientists from around the world to Oklahoma to speak to OMRF's faculty members about the latest developments in biomedicine.

An anonymous donor created the **Tom Garrard Endowed Lectureship** in 1981 to honor noted McAlester businessman and philanthropist Tom Garrard. The lectureship allows a distinguished international scholar to visit OMRF for a period of days.

In 1982, D. Allan Harmon and his son, Tom, established the **Dorothy Baugh Harmon Endowed Lectureship** in memory of their late wife and mother. D. Allan Harmon was among the 25 original OMRF incorporators and board members, and his construction company built many of OMRF's buildings.

The **D. Allan Harmon Endowed Lectureship** was established in 1984 by Harmon's son and partner in his construction business, the late Tom Harmon.

The Chapman Trusts of Tulsa established the **William H. Bell Endowed Lectureship** in 1984 to honor this champion of education, medicine and the law and in recognition of his devotion to OMRF and its mission.

Established in 1993, the **Robert H. and Lynn C. Spahn Endowed Lectureship** pays tribute to the philanthropic Oklahoma City couple whose charitable gift annuity to OMRF also established the Spahn Center for Genotyping.



Dr. David Ho delivers the first Oklahoma AIDS Care Fund lecture.

A charitable gift annuity from Sarajane Batchelor funded the **Dr. John J. and Sarajane C. Batchelor Endowed Lectureship** in 1997.

Created in 1998, the **Clayton S. White Endowed Lectureship** honors the former OMRF president, who pioneered the study of the effects of nuclear blasts on humans.

California businessman Dr. Ernest Huang founded PharMingen, a biomedical research product company. A long-time benefactor of many research and medical organizations, he established the **Ernest Huang/PharMingen Endowed Lectureship** at the Oklahoma Medical Research Foundation in 1999.

The Oklahoma AIDS Care Fund provided a grant in 2004 to support lectures and speakers focused on HIV and AIDS. In 2005, Dr. David Ho, *Time* magazine's 1996 Man of the Year, served as the inaugural speaker for the **Oklahoma AIDS Care Fund Lectureship Series**.

Educational Funds

Educational funds assure the continued vitality of OMRF programs that benefit Oklahoma's science students and educators.

The **OMRF Education Fund** supports a pair of educational initiatives at OMRF: the Sir Alexander Fleming and Foundation Scholar

Programs, initiatives that provide crucial learning resources for the state's high-schoolers, college students and science teachers.

Former Oklahoma State University professor Dr. Julia McHale created the **James Henry McHale Scholarship Fund** in 1993 in memory of her father. A Sir Alexander Fleming Scholar from the Stillwater area is designated the McHale Scholar each year.

The Puterbaugh Foundation funded the **J.G. Puterbaugh Scholar Fund** in 2000 to support a Sir Alexander Fleming Scholar from McAlester, Pittsburg County or southwest Oklahoma. The scholarship is named in honor of J.G. Puterbaugh, an OMRF founder, former chairman of the board and the foundation's second president.

Jack and Dorie Barrett of Shawnee designated funds to support the **Barrett Ph.D. Scholar in Molecular Oncology** in 1998. Mrs. Barrett served OMRF twice—once as an employee in the research clinic in the 1960s and again as a board member three decades later.

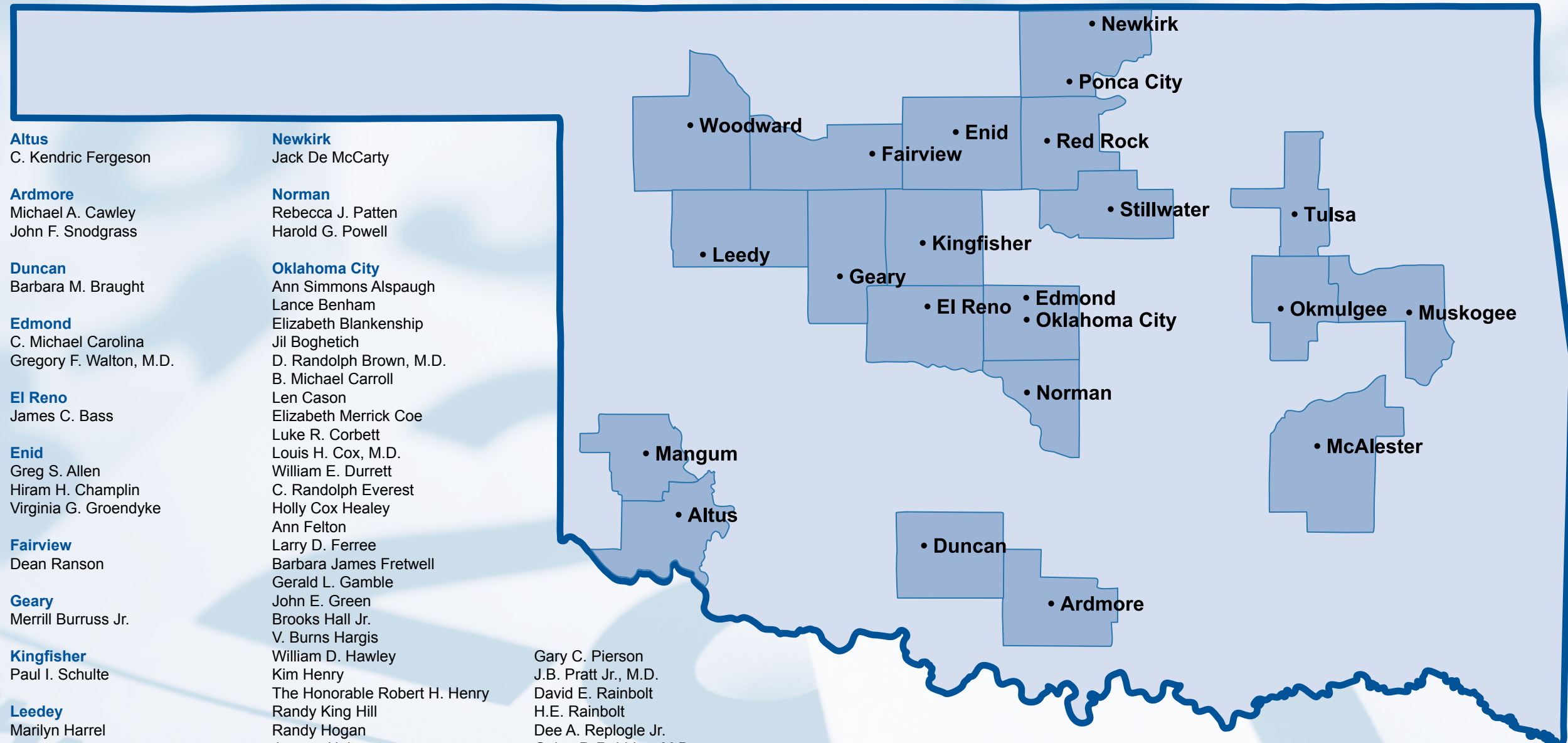
Proceeds from the inaugural First Ladies Gala, coupled with gifts from angel benefactors, established the **J. Donald Capra, M.D., Graduate Student Scholarship Fund** in 2005. The surprise honor was announced at the Gala to recognize Capra for his commitment to graduate student education at OMRF.

Endowed Funds

Endowment	Date Established	Purpose	Endowment	Date Established	Purpose
Margaret L. Milligan Library Fund	1984	To acquire scientific journals for OMRF's library	Kent and Helen Ruth Fund for Biomedical and Neurological Research	1994	For research on polio or post-polio conditions, or for other foundation needs at the president's discretion
Hettie V. Kaiser Endowment for Medical Research	1984	To promote research in medicine, surgery or any allied science	Lytle Family Fund	1995	Unrestricted use
Florence O. Wilson Endowment Fund	1987	Unrestricted	Ethan A. Mills Endowment	1995	Heart and cancer research
Cleank L. Gers Fund for Cancer Research	1986	Cancer research laboratory fund	Stillwater National Bank Endowment	1995	General research
Onez Norman Rooney Endowment	1989	For foundation needs as determined by OMRF's governing body	Melvin L. and Ruby E. Clow Trust	1995	For research on heart bypass surgery or relapsing polychondritis
Robert and Grace Eldridge Endowment	1987	Arthritis and heart research	Clarice B. Wiser Fund for Cancer and Cardiovascular Research	1996	Cancer and cardiovascular research
Jessie Kinley Endowment Fund	1987	To fund the greatest needs of the foundation	W.G. Thurman Plant Fund	1997	To help fund major repairs and renovations of the physical plant
Lt. William H. Eldridge Memorial for Heart Research	1989	Heart research	Rainbolt Family/BancFirst Research Fund	1998	Unrestricted use
The Nell A. Sutton Trust	1978	Unrestricted	Warren J. and Helene H. Bates Endowment for Alzheimer's Disease Research	1999	Alzheimer's research
Mary Gay Whitlaw Endowment	1989	For use at the president's discretion, with a preference for cancer research	William G. and Gabrielle A. Thurman Fund for Biomedical Research	1999	General research
Myra L. White Memorial Fund	1990	Heart research	Noble Foundation Challenge Grant	1999	To match new donations in support of the endowment
Dr. Oscar H. Miller Memorial for Heart Research	1990	Heart research	The Colleen Cravens Pease Endowed Fund for Cancer Research	2000	Cancer research
John H., Nancy and Marty Miller Biomedical Research Fund	1990	Unrestricted	Leta M. Chapman Institute for Developmental Biology	2000	To support the Developmental Biology Research Program
Erl Deacon Endowment	1991	Scholarships and research	Louise T. Swank Heart Research Endowment Fund	2000	Cardiovascular research
C.W. Titus Foundation Endowment	1992	Brain disease research	Donald W. Reynolds Center Maintenance Endowment	2000	For operating and maintaining the Donald W. Reynolds Center for Genetic Research
Mary Ann Foley Burruss Endowment	1992	Unrestricted use	B. Connor Johnson Molecular Research for Aging	2002	Molecular research in aging
Clifford E. and Alice Mary Burns Memorial Fund for Biomedical Research in Hematology	1993	Hematology research	Etta Cook Shope Endowed Research Fund	2003	Cancer, heart disease and Alzheimer's research
The Ruth Nancy Noell Memorial Fund for Biomedical Research in Aging	1993	Aging research			
Harry Rudolph Jensen Memorial for Heart (or Cardiovascular) Research	1994	Heart research			



2005 Board of Directors



Altus
C. Kendrick Ferguson

Ardmore
Michael A. Cawley
John F. Snodgrass

Duncan
Barbara M. Braught

Edmond
C. Michael Carolina
Gregory F. Walton, M.D.

El Reno
James C. Bass

Enid
Greg S. Allen
Hiram H. Champlin
Virginia G. Groendyke

Fairview
Dean Ranson

Geary
Merrill Burruss Jr.

Kingfisher
Paul I. Schulte

Leedey
Marilyn Harrel

Mangum
Jack M. Givens

McAlester
Wanda Bass

Muskogee
John W. Griffin
Martha Griffin
John H. Saxon III

Newkirk
Jack De McCarty

Norman
Rebecca J. Patten
Harold G. Powell

Oklahoma City
Ann Simmons Alspaugh
Lance Benham
Elizabeth Blankenship
Jil Boghetich
D. Randolph Brown, M.D.
B. Michael Carroll
Len Cason
Elizabeth Merrick Coe
Luke R. Corbett
Louis H. Cox, M.D.
William E. Durrett
C. Randolph Everest
Holly Cox Healey
Ann Felton

Larry D. Ferree
Barbara James Fretwell
Gerald L. Gamble
John E. Green
Brooks Hall Jr.
V. Burns Hargis
William D. Hawley
Kim Henry
The Honorable Robert H. Henry
Randy King Hill
Randy Hogan
Jerome Holmes
Lou C. Kerr
John E. Kirkpatrick
Harrison Levy Jr.
David Lopez
Frank A. McPherson
Randall D. Mock
James A. Mueller
Thomas W. Parrish
Richard H. Parry
Bond Payne Jr.

Gary C. Pierson
J.B. Pratt Jr., M.D.
David E. Rainbolt
H.E. Rainbolt
Dee A. Replogle Jr.
Galen P. Robbins, M.D.
Patrick T. Rooney
Robert J. Ross
Michael S. Samis
Phyllis J. Stough
Paul B. Strasbaugh
Bill Swisher
The Honorable Steven W. Taylor
Betsy Zahn Thorpe
Marylin Jones Upsher
Loyce Youngblood

Okmulgee
W. Carlisle Mabrey III

Ponca City
Pat Evans

Red Rock
The Honorable Henry Bellmon

Stillwater
Malinda Berry Fischer
Bretton H. Jameson, M.D.

Tulsa
Sharon J. Bell
D. Ellen Burgess
J. Markham Collins, Ph.D.

The Honorable Claire V. Eagan
Jacqueline Haglund
Don W. Pitman
Ross O. Swimmer

Woodward
Bruce T. Benbrook

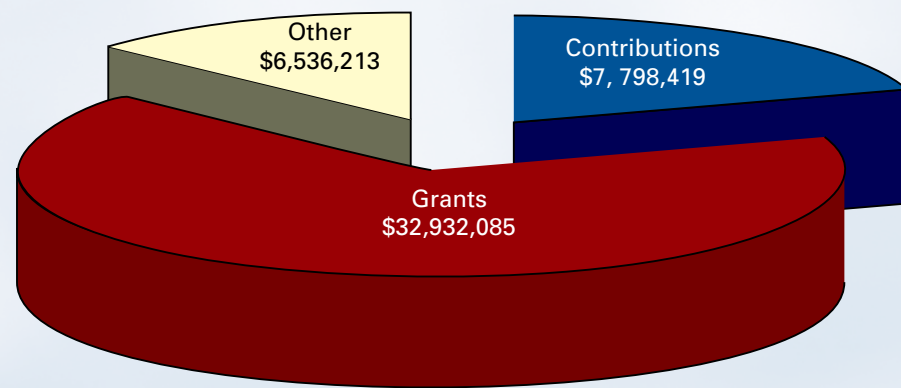
[24]

[25]

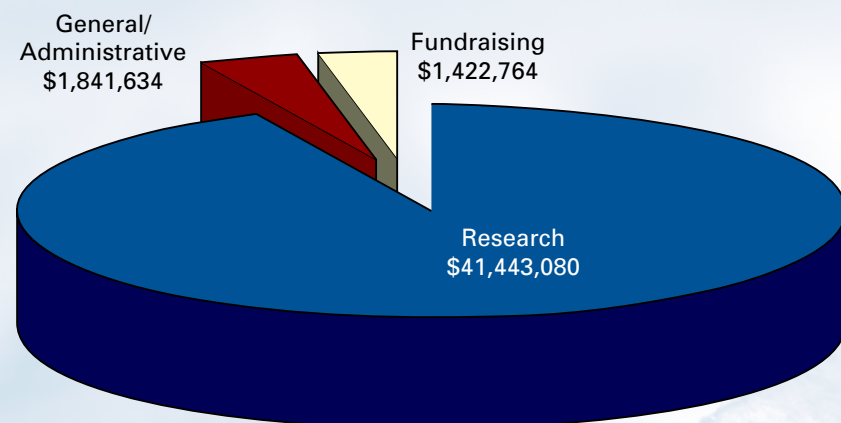


Financial Statement

Revenue



Expenses



Fiscal year 2005 was another strong one for the Oklahoma Medical Research Foundation. OMRF's administrative costs remained extremely low, representing only 7.3 percent of operating expenses. This fiscal discipline is one of the reasons OMRF once again earned four stars—the highest possible rating, from Charity Navigator, the nation's largest evaluator. Charity Navigator has awarded OMRF its coveted four-star rating each year since the ranking organization was founded in 2001.

At the close of fiscal year 2005, OMRF's assets totaled \$276 million, an increase of \$18 million over 2004. Of this total, \$188 million functions as

endowment. This figure grew by more than \$15 million in the previous 12 months.

OMRF continues to depend heavily on private contributions: gifts, bequests, memorials and other donations. Because income from a charitable trust covers all administrative costs, OMRF uses 100 percent of all private contributions to fund research programs.

OMRF uses 100 percent of all private contributions to fund research projects.

Selected Financial Information Operating Fund July 1, 2004 - June 30, 2005

OPERATING REVENUE:

Competitive research grants:	
National Institutes of Health grants	\$ 26,214,077
Other competitive research grants	<u>6,718,008</u>
Total grants	<u>32,932,085</u>

Private contributions:

Income and gifts from trusts	5,891,303
Gifts and bequests	391,714
Contributions	986,093
Memorials	<u>529,309</u>
Total private contributions	<u>7,798,419</u>

Other revenue:

Interest and investment income	3,055,017
Mineral income	810,386
Royalties and licensing income	2,040,268
Rent, analytical lab and miscellaneous	<u>630,542</u>
Total other revenue	<u>6,536,213</u>

Total revenue	47,266,717
---------------	------------

Operating revenue from wills, pledges and other restricted gifts recorded in prior years	<u>2,177,955</u>
--	------------------

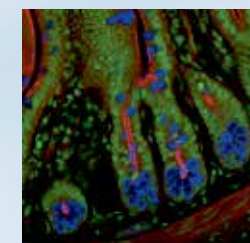
Total operating revenue	<u>49,444,672</u>
-------------------------	-------------------

OPERATING EXPENSES:

Program Services - Research	41,443,080
Support Services - General and administrative	<u>3,264,398</u>
Total operating expenses	<u>44,707,478</u>

Excess of revenues over expenses	\$ <u>4,737,194</u>
----------------------------------	---------------------

\$4,662,234 of the \$4,737,194 in excess of revenues over expenses was used for plant and equipment purchases. The remaining \$74,960 is available for future operating, plant and special project needs.



[26]

[27]

the *financial* picture

2005 Honor Roll

We are grateful to the many individuals, foundations, corporations and organizations that supported OMRF during 2005. Between January 1 and December 31, 2005, more than 10,000 donors gave over \$21 million to OMRF. Your generosity has greatly enhanced our success. Thanks to you, a cure is out there!

\$1,000,000 or more

J.A. and Leta Chapman Trusts
Ms. Vera Mae Eversole
Presbyterian Health Foundation

\$500,000 - \$999,999

Ms. Mildred A. Kienlen
Mr. William O. Pettit
Putnam City School District
Cancer Fund
Mr. Byron Strawn

\$100,000 - \$499,999

Judith and Jean Pape Adams
Charitable Foundation
Anonymous
H.A. and Mary K. Chapman
Charitable Trust
Ms. Edith Clark
Ms. Ruth Frass
Mrs. Floye Hervey
Hille Family Foundation
Hocker Foundation
Ms. Virginia W. McKenzie
Ms. Effie Raye Puckett
Gene and Jeannine Rainbolt
Records-Johnston Family
Foundation, Inc.
Ms. Doris J. Schneider

\$50,000 - \$99,999

Ms. Roberta Roads Allen
Drs. Don and Pat Capra
Clyde R. Evans Charitable Trust
Ms. Alice Foale
Kerr Foundation, Inc.
Ms. Jane R. Laing
James T. and Virginia J.
Lindsay Trust



Mr. Dale Matherly
ONEOK Foundation
Ms. Louise Eleanor Perkinson
United Way of Central
Oklahoma

\$10,000 - \$49,999

AEP Public Service Company of
Oklahoma
Ms. Ann Simmons Alspaugh
Bachelors Club Foundation of
Oklahoma City
BancFirst
Ms. Lydia Bunnell
Chesapeake Energy Corp.
Dr. and Mrs. Louis H. Cox
Devon Energy Corp.
Flintco, Inc.
Ms. Dorothea French
Frontiers of Science Foundation
of Oklahoma, Inc.
Grand Chapter of the Order of
the Eastern Star of the State
of Oklahoma
John and Virginia Groendyke
Lorene Cooper Hasbrouck
Charitable Trust
G. Ed Hudgins Family Fund
IBC Bank
Ms. Gertrude Ishmael
Ms. Iva Lee Kennedy
Kerr-McGee Corporation
Jessie Dearing Kinley
Testamentary Trust
Richard K. and Ruth S. Lane
Memorial Trust
Mattison Avenue Publications
Ms. Irene McClung
Ms. Norma J. McPherson
Merrick Foundation
OKC Community Foundation
Fleming Scholarship Fund
Glenn W. Peel Foundation
Mr. and Mrs. Ray Potts
Robert Glenn Rapp Foundation
Mr. and Mrs. Steve Raybourn
Ms. Helen Marie Roesler
Mr. S. Graham Smith
Weitzenhoffer Foundation
Mr. Andrew Phillip West
Mrs. Loyce L. Youngblood

\$5,000 - \$9,999

Bank of Western Oklahoma
Best Companies
Bethany Public Schools
G.T. and Elizabeth Blankenship
Mr. and Mrs. Len B. Cason
Champlin Foundation
Mr. and Mrs. Hiram H. Champlin
ConocoPhillips Company
The Oklahoman
Ms. Patricia Evans
Express Personnel Services
Ms. Ina Ferrill
First Freedoms Fund PAC
Gerald and Jane Gamble
Gardner Tanenbaum Group
Mr. Russ Harrison
Hartzog, Conger, Cason and Neville
Hilb, Rogal and Hobbs Company
Intergenetics
Harrison and Elaine Levy
Matherly Mechanical
Contractors, Inc.
Metris Foundation
Garrett Miles
Miles Associates, Inc.
Monterey Fund, Inc.
NBC, Oklahoma City
OKC Retailers Foundation
Madalynne L. Peel Foundation
Mr. and Mrs. Harold G. Powell
Gay L. Ritter Revocable Trust
Galen and Bobbie Robbins
Mary Elizabeth Robinson Trust
Sarkeys Foundation
Ms. Mary Louise Scott
Etta V. Shope Trust
Frank Wohl Memorial Bass
Tournament
Mr. and Mrs. Robert Yaffe and The
Yaffe Companies

\$1,000 - \$4,999

Don and Shawn Abernathy
Richard M. and Carolyn Adkins
Advanced Micro Solution, Inc.
Steven C. and Nancy L. Agee
Mrs. Leota Amsey
Max and Dorothy Baggerly
Mr. Charley F. Ballou
Bank of Oklahoma, Oklahoma City
Ms. Cindy Barrios
Jim and Kay Bass
Dr. Wanda Bass
Mr. and Mrs. Vernon Belcher
Lance and Linda Benham
Benham Companies, Inc.
Steve and Shelly Blair
Blanton Property Company, LLC
Blue Cross and Blue Shield of OK
Jil and Tony Boghetich
John and Clara Bowen
Mrs. Betty L. Bower
Del and Peggy Boyles
Ms. Amy J. Brady
Mr. Stan Brassfield
Mr. Rob Braver
James and Betty Bruce

Mr. and Mrs. Jack L. Bryan
Richard and Ellen Burgess
Ms. Gretta J. Burnett
Mr. and Mrs. Merrill B. Burruss, Jr.
Robert D. and Dolores Call
Randy and Connie Calvert
Mrs. Jo Anna Campbell
Mr. Brian Carmack
Mr. and Mrs. Michael Carr
Mr. and Mrs. Phil G. Carson
Klem and Cindy Chandler
Mr. and Mrs. Bill R. Chatham
Mickey L. and Debbie L. Clagg
Mr. and Mrs. James D. Cobb
J.L. and C.N. Coffman
Foundation Trust
J. Markham and Becky Collins
Comp Risk Management, Inc.
Continental Resources, Inc.
Jackie Cooper BMW and Imports
Mr. Ken Craig, Jr.
Nance G. and Barbara M. Creager
Russell and Hazel Crooch
Mr. and Mrs. Frank L. Davies, Jr.
Mr. and Mrs. Herbert G. Davis
Davis Farms/Iron Mound
Investment Fund
Mr. T. Al Dearmon
Mr. and Mrs. Dan L. Dillingham
Randall and Kaye Dillingham
Mrs. Beryl Duer
Mr. and Mrs. Arthur V. Eckroat
Honorable Drew Edmondson
Mr. and Mrs. I.W. Ellard
Mr. and Mrs. Clark Ellison
Mr. and Mrs. C.H. Elson
Dr. Naomi Esmon
Mr. Lester A. Farmer, Jr.
Darise Farris, Ph.D.
Mr. Foreman Faulkner
Ms. Ann Felton
Ken and Mary Ann Ferguson
First Bank and Trust Company
First National Bank in Altus
First National Bank of Oklahoma
Dick and Malinda Berry Fischer
David and Pam Fleischaker
Edward and Jeannie Fowler
Ed and Barbara Fretwell
Louis and Tracy Gasbarra
Olin and Kathryn Gilbert
Mr. and Mrs. Jack M. Givens
Ms. Carol Glass
Tom and Sandy Goldsworthy
Gary Gorbosky, Ph.D.
Mrs. Evelyn F. Grisso
Mr. Marcel Hage
Paul and Barb Hale
Mr. and Mrs. Pat Hallren
Mr. and Mrs. Burns Hargis
Mrs. Beverly A. Harkness
Fred and Kellie Harlan
D. Allen and Dorothy B. Harmon
Memorial Fund
Robert and Crosby Harris
Jess Harris and Harris Family Trust
Mr. Ralph L. Harvey
Russell Owen and Jo Ellen Hayes

Mr. Loren Bruce Heath, III
Mr. Jon Heavener
Mrs. Joy Heiman
Mr. Gordon Helm
Mrs. R.G. Herndon
Mr. and Mrs. Michael E. Hill
Mr. and Mrs. Robert Hinman
Mr. David A. Huffman
Mr. Huston Huffman, Jr.
Mr. and Mrs. Harry E. Hughes
Idabel National Bank
Inasmuch Foundation
Jim Inhofe Committee
Friends of Ernest Istook-Congress
Dr. Judith James and Glen Aden
Wood
Fred and Mary Eddy Jones
Foundation
Mr. Ronald L. Jones
Mrs. Lois M. Kate
Mr. Richard Kells
Mrs. Lou Kerr
Kent and Jean Kirkpatrick
E.P. and Roberta L. Kirschner
Foundation
Mr. Harold J. Kleen
Mr. and Mrs. Edward Krie
Mr. and Mrs. Sammy G. Lane
Dr. Rosalie A. Lavon
Mr. and Mrs. Ray M. League
Vernon and Von Leake
Ms. Elinor LeDoux
Mr. and Mrs. Herbert M. Leonard, Jr.
Mr. James A. Logan, Jr.
Mrs. Margaret M. Lukenbach
Mr. and Mrs. Melvin H. Madewell
Madewell and Madewell, Inc.
Mr. Howard Maier
Paul Mainard Family Trust
Mrs. Ilse H. Martin
Ms. Billie J. McEver
Dr. Rod and Gigi McEver
Julia L. McHale, Ph.D.
Mrs. Bonnie McIntosh
Mike E. and Jenna McIntosh
Mr. J. Bret McIntyre
Mrs. Chloe Ann McKaig
Tony and Janis McKaig
Mr. and Mrs. Mason McLain
Mr. Wilbur E. McMurtry
Doug and Debby McQueen
Randy and Linda Mecklenburg
Mr. Michael Merle
Chuck and Mary Mikkelson
Mrs. Roberta Miller
James R. and Sarah F. Moore
Chip and Suzy Morgan
Mr. and Mrs. Gary Mourton
Ms. Elizabeth B. Musson
Mr. and Mrs. Howard W. Myers
Mr. and Mrs. Bruce A. Naylor
Ms. Sharon Neuwald
Robert and Sara Northwood
Mrs. Frances O'Hornett
Oklahoma Association Mother's Club
Grant Fund
Ms. Van Oliver
David and Diana O'Daniell

Order of the Eastern Star #77
Order of the Eastern Star #422
Osborn Electric Company
Mr. and Mrs. Thomas W. Parrish
Mr. and Mrs. Richard H. Parry
Mr. John Mark Paschal
Mr. Thomas L. Patton
Bob and Jackie Poe
Mrs. Mary Alice Rainbolt
Mr. and Mrs. George J. Records
Mr. and Mrs. Dee Replogle, Jr.
John and Berta Faye Rex
Ms. Zelda M. Roberson
Herschel and Cathy Roberts
Mr. and Mrs. C.W. (Bill) Robertson
Mr. and Mrs. Jeffrey B. Robinson
Dr. John A. Robinson
Mr. Robert L. Rogers
Rogers and Bell
Mr. and Mrs. Patrick Turner Rooney
S. Rose and Sons
Mr. and Mrs. Jim Rutherford
Todd and Cindy Sanner
Mrs. Patricia Pape Savage
Mr. William D. Sinclair
Mr. Richard M. Singer
Ms. Etta Jean Smith
Mr. J.B. Smith
Mrs. Margaret D. Smith
Mr. William A. Snyder
Mrs. Wilma J. Soper
Jeff and Judith Stallsmith
Mr. and Mrs. Craig Stanley
Mr. and Mrs. Mark Stevenson
Stillwater National Bank
and Trust Company
Stock Exchange Bank
Mr. and Mrs. Paul B. Strasbaugh
Mr. and Mrs. John W. Sturges
Mr. and Mrs. Coy Sullivan
Mr. and Mrs. Bill Swisher
Tarnopol Family Foundation, Inc.
Third Degree Advertising
Linda Thompson, Ph.D.
Dr. and Mrs. Harold Tisdal
Mr. Roy E. Townsden
Mr. John A. Trigg
James and Ruth Trowbridge
Mr. Michael S. Turner
United Methodist Home of Enid, Inc.
United Way of Norman, Inc.
University of Oklahoma Foundation
Mr. Jim Van Hoose
Veterans of Foreign Wars
Ladies Auxiliary
Ms. Sue Ann Walls
Wal-Mart Foundation
Gregory F. and Traci Walton
Ron and Susanne Waranch
Mrs. Jean Wasson
Mr. and Mrs. Charles C. Weddle, Sr.
Dan and Carmalieta Wells
Mr. Steve E. Wells
Mr. Robert Whisenhunt
Mr. and Mrs. John L. Williford
Mr. and Mrs. Daniel G. Wilson
Mr. H.L. Wirick, Jr.
Dick and Camilla Wright

2005 Honor Roll

Thomas Z. and Virginia K. Wright
Mr. and Mrs. Robert B. Wyrick
Mrs. Nancy P. Yoch
Ms. Caroline Young
Ms. Linda R. Young

\$500-\$999

Ada Regional United Way
ARINC, Inc.
Jerry D. Balentine, PC and Assoc.
Mrs. Dorie Barrett
Mr. and Mrs. Wirt Randolph Batis
G. Dana and Shirley S. Brabson
Bear Stearns Securities Corporation
Central National Bank, Poteau
Church of the Savior, Oklahoma City
Mr. and Mrs. William I. Churchill
Mr. Winters Cochran
Mr. Winston B. Coffman
Adam and Julie Cohen
Ms. Karen E. Como
Dan and Mary Ann Craige
Crystal Wood Village
Dolese Brothers Trucking Division
Mrs. Audrey Eden
Mr. and Mrs. Mark Eulberg
Robert and Lura Fabian
Ms. Hiliary Faulkner
First National Bank and Trust
Company, Ponca City
First State Bank of Altus
Mr. and Mrs. Thomas H. Flesher, Jr.
Mr. Timothy E. Foley
Mr. and Mrs. Bill Frankfurt
Mr. A.W. Green
Mr. John W. Griffin
Grow For Life
Mr. L.A. Guest
Dr. and Mrs. Roger V. Haglund
Mr. and Mrs. Harold Halvorson
Happiness is Helping Foundation
Mr. and Mrs. William Harrah
Heritage Trust Company
Mr. Willard Hohnstein
Mr. Jerome A. Holmes
Hungerford Oil and Gas, Inc.
[30] Drs. Cathy and John Jameson
Mr. and Mrs. Ilan Kaufthal
Stan and Sally Kimball
Ms. Jane C. Krizer
Ms. Joanna L. Latting
Mr. and Mrs. M. Stanley Lee
Mr. David Liebowitz
Kathleen Lister Fund
Vada Lockhart
Ms. Mira Lyubovny
Mr. Warren D. Majors
V. David and Billie Lynn Miller
Larry and Margaret Morris
Richard and Della May Moulson
Larry and Linda Neal
Mr. Carl A. Nilsen and Mrs.
Georgeanna Nilsen
Ms. Sharon Piper
Poe and Associates, Inc.
Mrs. Hazel C. Posey
Ramsey Real Estate
Donald W. Reynolds Foundation
Mr. and Mrs. Ted P. Roberts
Mr. David L. Russell

Mr. Duaine Schoneweis
Milton and Jane Seagraves
Dr. Samuel L. Shapiro
Edward and Jean Shaw Charitable
Gift Fund
Shawnee Milling Company
Mr. and Mrs. John Shelley
Phil and Susan Smauder
Mr. and Mrs. Kenneth C. Smith
J.C. and Shirley Spitzer
Mr. and Mrs. Jason Stratton
Steven and Michele Sweetwood
Rheal Towner, Ph.D.
Mrs. Mary Trachtenberg
William and Ann Trumbly
Mrs. Carole Unruh
Bob and Barbara Vernon
Mark and Mary Virden
Tania Warnock Reining Horse Sports
Foundation
Joe and Laura Warriner
Weokie Credit Union
Mrs. Wanda Westheimer
Mr. and Mrs. Alex Wilson
Dr. and Mrs. William B. Wynn
Mr. Andrew Yaciuk
Mr. and Mrs. James G. Young

\$100-\$499

20th Century Club
32nd Flying Training Squadron
Mr. and Mrs. William C. Abney
Mrs. Alma M. Adams
Mr. Arnold Adams
Mrs. Clella M. Adams
Dick and Mary Ann Adams
Mr. and Mrs. Larry J. Adams
Mr. and Mrs. Randy Adams
Mike and Caroline Agan
Mr. and Mrs. Iftikhar Ahmad
Air Technologies
Lloyd R. and June Alexander
Mr. and Mrs. Stan Alexander
Mrs. Mary Allen
Mr. Othel C. Allen, Jr.
Mrs. Pegge M. Allen
Mr. and Mrs. Robert D. Allen
Mr. and Mrs. James Allison
Jerome K. Altshuler Charitable
Foundation
Amerada Hess Corporation
American Fidelity Property Company
American Legion Auxiliary #54
Perry and Bettye Ames
ANA Engineering, Inc.
Mrs. Elma E. Andersen
Mr. and Mrs. Bill Anderson
Mr. Bob G. Anderson
Mrs. Charlaune D. Anderson
Mr. and Mrs. D.C. Anderson
Mrs. Esther E. Anderson
Mrs. Marie Anderson
Mr. and Mrs. James I. Andrews
Ms. Minnie Andrison
Dr. and Mrs. Bobby Anthony
Jack and Pat Armstrong
Armstrong Bank
Mr. and Mrs. Gene Arnold
Ms. Estalita Ashby
Bill and Gay Ashcraft

Mr. and Mrs. Larry Auld
George and Marianne Austin
Mr. and Mrs. Jimmie Lynn Austin
Auto Parts and Machine, Inc.
Automated Building Systems, Inc.
Mr. and Mrs. Clarence E. Avery
Dr. and Mrs. Alan E. Aycock
Aydelotte Womens Class/Keen
Mr. Bob J. Bailey
Dick Bailey Motors, Inc.
Ms. Amy Baird
Baity Screw Machine Products, Inc.
Mrs. Beatrice M. Baker
Gene and Barbara Baker
Mr. R.S. Baker, Jr.
Mona Baldwin Endowment
Gene and Susan Baldwin
Bank of Cherokee County
Bank of Kremlin
Bank of Oklahoma, Tulsa
Bankers Bank, Oklahoma City
Ron and Paula Banks
Dr. and Mrs. Ron E. Banks
Barber Dyson Ford Lincoln
Mercury, Inc.
Mr. Paul M. Barby
Fred and Claudette Barker
Mr. and Mrs. Vestal L. Barker
Mr. and Mrs. George Barkett
Mrs. Jean Barkley
Ms. Betsy Barnes
Mr. and Mrs. Ferril Barnes
Roger and Delores Barnes
Ms. Cathy C. Barnum
Mr. and Mrs. Robert S. Barrigan
Barrow and Grimm, P.C.
Mrs. Judy C. Barry
Mr. and Mrs. Robert J. Basolo
Mr. and Mrs. Jack Bass
Dr. Enid M. Bates
Mrs. Mary H. Bates
Marion and Delcea Batterman
Mrs. Hazel M. Batton
Dr. and Mrs. Alan E. Bauman
Mr. and Mrs. Dick Beach
Mr. and Mrs. Dennis Beard
Gary and Ruth Beatie
Mrs. Peggy Beckham
Mrs. Ruth Ann Belitz
Ms. Jean Bell
Ms. Joan M. Bell
Ms. Sharon J. Bell and Mr. Gregory
Allen Gray
Mr. Terry Bell
Jack and Ruth Beller
Henry and Eloise Bollenbach
Bellmon
Andy and Linda Bennett
Bob and Gina Bennett
Mr. and Mrs. Earl W. Bentley
Miss Suzanne Beree
Mrs. Ima Faythe Berglund
Mrs. Thelma R. Berkenbile
Mrs. Barbara A. Berry
Mr. and Mrs. John A. Best
Mrs. Alma G. Betchan
Ms. Joann D. Bethel
Mr. and Mrs. Mike Bevill
BHC Pipe and Equipment
Warren and Marg Bickford

Mr. Leon Bidy
Ms. Betty Jane Biel
Mr. and Mrs. Walter Bruce Bigger
Ms. Janet Billett
Mr. and Mrs. Glenn Bingham
Robert G. and Betty J. Bingham
Mr. and Mrs. Lavon Biswell
Mr. and Mrs. Thomas P. Bittner
Mr. Otis H. Blacklock
Ben and Bonnie Blackstock
Frank and Linda Blain
Blanchard Lodge #395 A. F. and A.M.
Mr. and Mrs. Fred L. Blaylock
Jack and Joyce Blevins
Mr. and Mrs. Morris B. Blumenthal
Glenn and Edna Blunk
Mr. and Mrs. Mike Bobbitt
Dr. and Mrs. Donald W. Bobek
Mrs. Loretta Bogie
Mr. and Mrs. R. L. Bohanon
Jerry and Judy Boismier
Dr. and Mrs. John L. Boland
Howard and Kaye Bond
Mr. and Mrs. Henry C. Bonney
Mrs. Nancy Bottom
Mr. and Mrs. George B. Boulware, Jr.
Mrs. Louise L. Bouton
Mrs. Coyla J. Bowden
Mr. and Mrs. Jack Bowers
Mr. and Mrs. Alan Bowlby
Ms. Gail Bowline
Bowman Enterprise
Jeff and Karen Bowser
Tommy and Novice Boyd
Dr. and Mrs. John R. Bozalis
Ms. Jennifer Brabson
Mr. John F. Bracken, Jr.
Brakefield Plumbing Heating
The Brames
Mr. and Mrs. William E. Branham
Cecil and Betty Branscum
Mr. and Mrs. Olin R. Branstetter
Mr. and Mrs. Jordan C. Braun
Mrs. Mary J. Bredel
Mrs. Sylvia Breese
Ms. Evelyn Brewer
Neil and Trudi Briix
Bill and Barbara Brinkman
Mr. and Mrs. Dean Brinkoetter
Mrs. Betty Ann Brinson
Mr. and Mrs. Samuel B. Bristow
Mr. and Mrs. Bill Broughton
Terry and Ann Brown
Bob and Zelda Brown
Charlie Brown Auction Company
Cecil and Lucille Brown
H. Blanton Brown and
Associates, PC
James and Ruth Anne Brown
Mr. and Mrs. John T. Brown
Mr. and Mrs. John J. Brown
Mrs. Leora Brown
Mr. and Mrs. Phil Brown
Mr. and Mrs. Reginal Brown
Dr. Blaine T. Browne
Mrs. Martha M. Brunzman
Mrs. Mary Louise Buckley
Ms. Regina Buckley
Bruce and Jacque Buehler
Lee and Gayle Bullock

Col. (Retd.) Victor T. Bullock
Mr. Carroll J. Bunch
Mr. and Mrs. Robert L. Bunch
Ms. Carolyn Bural
Hugh R. and Timi Burch
Bureau of Indian Affairs-Office of
Indian Education
Mr. and Mrs. David Burge
Mr. and Mrs. Leycel A. Burger
Mr. and Mrs. Alan Burgtorf
Mrs. Verona E. Burke
Mrs. Darlene R. Burleson
Mr. and Mrs. J.C. Burmeier
Ms. Annie L. Burns
Mr. and Mrs. Lawrence B. Burris
Mrs. Frances Burris
Mr. and Mrs. Donald Burton
Ms. Nancy Burton
Sid and Jan Burton
Ms. Catherine Busch-Kinkaid
Mrs. Lois W. Bushart
Mr. and Mrs. John M. Bushnell, Jr.
Ron and Dama Butler
Lt. Vernon R. Butler
Butterly Company, Ltd.
Mr. and Mrs. Neville R. Cable
Dale and Anna Lou Caid
Mr. and Mrs. Bill Caldwell
Mrs. Winifred I. Caldwell
Ms. Dorothy Campbell
Mrs. Carolyn Campbell
Mr. and Mrs. Charles L. Campbell
Gene and Sally Campbell
Ken and Sharon Campbell
John and Sandy Campion
Ms. Alice Cantrell
Mr. and Mrs. Robert L. Carder
Carl's Coffee Club
Mrs. Janice B. Carmack
Carmen Chamber of Commerce
Bill and Willy Carnahan
Mr. and Mrs. Michael Carolina
Mr. and Mrs. Edward J. Carr
Mr. Patrick Carroll
Mr. and Mrs. Lynn Carson
Mrs. Charline E. Carter
Mrs. Jewel Carter
Miss Robbie D. Carter
Dr. and Mrs. Robert G. Case
Joe and Sara Caskey
Tad and Meridith Cassidy
Cassidy Grain Company
Ms. Deloris J. Castor
Cedar Springs Pharmacy, Inc.
Central National Bank, Enid
Central Oklahoma Chapter
Retired Officers
Central Pharmacy and Hospital
Equipment Company
Century 21 Town and Country, Inc.
Mr. and Mrs. Sam J. Cerny
Mr. and Mrs. John Chain
Mr. and Mrs. David A. Chambers
Ms. Joanna M. Champlin
Gerry and Sheila Chaney
Mr. and Mrs. James M.
Carmichael, Jr.
Ms. Vicky Palmer Chase
Mr. and Mrs. John D. Cheek
Mrs. Betty Chenault



Don and Chrissie Childers
Mr. and Mrs. Boyd A. Christensen
Mr. and Mrs. Ray Gene Cinnamon
CITGO Petroleum Corporation
Jack and Carolyn Clark
Bob and Jen Clausing
Charles and Mary Alice Claybaugh
Dr. Ted Clemens, Jr.
Mr. Kent Clement
Mr. Jack L. Cline
Mr. and Mrs. Clay Clinesmith
Marzell Goble Clubb
Joe and Joyeline Costen
Mr. and Mrs. John J. Coates, Jr.
Mr. and Mrs. Andrew Coats
Mr. Steve Cochi
Mr. and Mrs. Bruce Cochran
Mr. and Mrs. Ronald L. Cochran
Mrs. Valerie A. Cochran
Wayne and Joan Cochran
Gilbert and Billie Cody, Jr.
Ms. Elizabeth Merrick Coe
Mr. and Mrs. Jim Coffman
Mr. and Mrs. Mark T. Coke
Mr. and Mrs. Quentin F. Coker
Mr. and Mrs. Ronald D. Cole
Ms. Ginger Coleman
Mrs. Janice Collins
Collins, Butler and Company, PC
Ms. Cynthia Sue Colton
Mr. Raymond G. Colvert, Jr.
Mrs. A.C. Commander
Bob and Sandy Compton
Computer Consultants, Inc.
Mr. James D. Comstock
Bob and Ann Condren
Mr. and Mrs. Dick Conley
Mr. and Mrs. Walter L. Conner, Jr.
Robert and Karla Conner
ConocoPhillips
Mr. Earl O. Conrad
Dr. and Mrs. Michael N. Conrad
William and Janet Cook, II
Ms. Ernestine E. Cook
Mrs. Gloria Cook
George and Vivian Cooper
Mrs. Joyce Copeland
Mr. Charles Copus
Mr. and Mrs. Billy G. Corbitt
L.G. and Sharon Cornish
County Officials Excise Board and
Deputies
Mrs. Maxie R. Courtney
Ms. Kim A. Cowherd
Ted and Gayle Cox
Cecil and Anita Cox
Mr. and Mrs. Donald E. Cox
Jerrold and Dora Jean Cox
Mr. and Mrs. Wilbur E. Cox

2005 Honor Roll

Mr. and Mrs. John M. Crabtree
Mr. and Mrs. Albert L. Crabtree
Mrs. Lois M. Craft
Mr. Charles E. Craig, Jr.
Mr. and Mrs. Jarvis H. Craig
Mr. and Mrs. Johnnie G. Cramer
Mr. and Mrs. Raphael Cravens
Ms. Carolyn Pyle Crepps
Ms. Elizabeth Crews, CPA
Mr. and Mrs. Jack R. Crissup
Mrs. Betty L. Criswell
Tom and Diane Criswell
Mr. and Mrs. Stanley R. Crites
Mr. and Mrs. Jack Crocker
Mr. Mark Cromwell
Mrs. Janice E. Crump
Robert D. and Elizabeth P. Culp
Mr. and Mrs. Jack Culp
Douglas and Peggy Cummings
Joe and Barbara Cunningham
Mr. and Mrs. Stanley L. Cunningham
Ben and Judy Curtis
Wayne and Bettie Curtis
Custom Color Corporation
Dr. and Mrs. Gary A. Cutler
Bill and Melba Dagy
Mr. William E. Dahlgren
Michael and Robyn Danz
Edwin S. and Ramona C. Darby
Mr. and Mrs. Mayo Darnell
Fred and Betsy Daugherty
Davenport Foundation, Inc.
Don and Beverly Davis
Mr. and Mrs. Duane D. Davis
Joe and Geardean Davis
Ms. Kay M. Davis
Mr. and Mrs. Leslie J. Davis
Mrs. Susie Davis
Mr. and Mrs. Bill Dawson
Tom and Linda Daxon
Dayton Tire Tubing Department
Mr. Garold A. Dean
Jimmy and Karen Dean
Ms. Barbara G. DeCastro
Mrs. Janet F. Deck
Mr. and Mrs. Sam L. Decker
[32] Mr. and Mrs. Scott L. Defebaugh
Ken and Corie Delashaw
Mr. and Mrs. Jerry Delozier
Delta Engineering and Materials
Miss Karen Denison
Department of Central Services
Mrs. V.J. Derrington
Tom and Peggy Devinish
Diamond Resouces Company
Paula and Lanny Dickmann
Bill and Shirley Dickson
Mr. and Mrs. Jack E. Dieken
Robert and Jane Diel
Mr. and Mrs. Bobby L. Dillard
Mr. and Mrs. William J. Dillon, III
Mr. Gary N. Distell
Frank and Carla Dixon
Mr. and Mrs. Greg J. Dixon
J.C. and Brenda Dixon
Ms. Lisa Doehling
Dogwood Creek Retirement
Community
Skip and Frances Dolan
Mr. and Mrs. Terry Donohue

Mr. H.E. Dooley
Dr. and Mrs. Roy J. Doty
Ray and Linda Downs
Col. and Mrs. Orvis R. Doyle
Mrs. Rose Drescher
Bill and Becky Dubois
Bill and Nancy Dudley
Mr. and Mrs. Leslie Dudley
Mr. and Mrs. Dennis Duffy
Richard and Rhonda Dugger
Mrs. Johnnie Lou Dugger
Bill and Catherine (Ware) Dukiet, Jr.
James and Emily Dunagin
Mrs. Octavia Duncan
Mr. and Mrs. J. Walter Duncan, Jr.
Mr. and Mrs. Bob Duncan
Dick and Kaye Dunham
Dr. and Mrs. Norman L. Dunitz
Earl and Judy Dunkleberger
Tom and Nancy Dunlap
Mrs. June K. Durland
Mr. and Mrs. James A. Duty
Mr. and Mrs. Larry Dvorak
Mrs. Donna Earnheart
Mrs. Joann M. Edwards
Edwards Trust
Dr. and Mrs. David M. Eggenberg
Mr. Jerry D. Eggleston
Mr. Everette Eissenstat
Mrs. Patti Elder
Mr. and Mrs. John Lee Elder
Mr. and Mrs. John B. Elder
Mrs. Louise Elder
Mr. John R. Elk, III
Ms. Doris E. Ellis
Mrs. Esther M. Ellison
Mr. and Mrs. Tom Ellison
Elsmere Foundation Inc.
Mr. and Mrs. Mark Emmons
Ms. Martha Enrath
Environmental Management
Directorate
Mr. and Mrs. Jay H. Erickson
Esinel Energy Company
Mr. and Mrs. Milton Evenson
Jim and Christy Everest
Mrs. Janelle Everest
Randy and Faith Mary Everest
Facilitation By Design
Mr. Dennis Fagan
Fairview Sale Barn
Dr. and Mrs. Ted Falconer
Family Medicine of Southeast Tulsa
Fargo Auto Dealer Commercial
Services
Farmers and Merchants Bank

Jerry and Mamie Farnham
Mr. and Mrs. Richard L. Farris
Melvin and Wanda Faulk
Jim and Sue Fellers
Ms. Charlotte L. Fillipow
Ms. Marie Finegan
First Fighter Control Squadron
First National Bank, Lindsey
First National Bank, Stigler
First United Methodist Church,
Duncan
Dr. and Mrs. Ronald Fishbach
Mrs. Grace Fites
Mr. Tom Fitzgerald
Miss Erin Fitzgerald
Mr. and Mrs. Len Flaming
Mr. Bugs Fletcher
Mr. and Mrs. Dale Folks
Dan and Wendi Foltz
Mr. Scott Forbes and Dr. Leslie
Rainbolt Forbes
Mr. and Mrs. Mike Ford
Bill and Mary Fors
Mr. Charles F. Foster, Jr. and Mrs.
Bertie K. Foster
Glenn and Suzanne Foster
Lynn E. and Katherine Frame
Mr. and Mrs. Douglas Fransen
Jay Frazier and Ruth Logan Frazier
Josh and Shannon Frazier
Larry and Shannon Freeman
Dr. and Mrs. Clay Freeny
Mr. and Mrs. Ellis Freeny
Mr. and Mrs. Bud French
Lloyd and Jo Frey
Mr. and Mrs. David E. Fry
Mr. and Mrs. Mike Fuller
Bill and Edith Fulton
Gable and Gotwals
Mr. and Mrs. Ernest Gabriel
Mr. and Mrs. Barry D. Gangwer
Garber Senior Citizens
Mr. Brett Gardner
Mr. David Gardner and
Mrs. Judy Kemp
Mr. and Mrs. Bill Garner
Miss Joan Gardner
Glendol and Sandy Garrett
Mr. and Mrs. James Garrett
Ms. Vonna Garrett
Mr. and Mrs. William H. Garrett
Mr. and Mrs. James S. Garrison
Dr. and Mrs. Bolar Garrison
Joe and Diane Garrison
William and George Ann Garrison
Thomas P. and Elyse G. Garvin

Robert and Leanna Gaskins
Ms. Helen Gaudin and
Mr. David Teague
John and Jean Scott Gaudin
Ms. Ernestine Gay
Ms. Ann Gibbons
John and Linda Gibbs
Mr. and Mrs. Daniel Gibson
Ms. Patricia J. Gibson
Ms. Reba A. Gibson
Mrs. Tamara Gibson
Mr. John Gieck
Larry and Harriet Gilbert
Mr. and Mrs. David Giles
Bill and Veda Girod
D.A. and Jo Givens
Dr. and Mrs. Bill Glasgow
Ike and Mary Beth Glass
Mr. and Mrs. Terry R. Glass
Mr. and Mrs. Thomas R. Godkins
Mr. and Mrs. Charles W. Goff
Don and Patty Goff
Mr. and Mrs. Brent Gooden
John and Sue Goodman
Mr. Joseph A. Gottlieb
Mrs. Gerrie Goucher
Mr. and Mrs. Bill D. Gould
Jerry and Isabelle Grace
Mr. and Mrs. Everett M. Graham
Mrs. Edna A. Graham
Mr. Steven A. Graham
Mr. and Mrs. Jack D. Graves
Terry and Frances Gray
Mrs. Johna F. Gray
Mr. and Mrs. Keith R. Gray
Mr. and Mrs. Virgil T. Graybill
Mr. and Mrs. John E. Green
Mr. and Mrs. Leroy Green
Danny and Lynnea Greenhaw
Mr. and Mrs. Oscar E. Greenlee
Jim and Kay Greenshields
Johnny and Betty Gregory
Mr. and Mrs. Floyd D. Griggs
Mr. and Mrs. John A. Griner, III
Mr. and Mrs. Jack Grisham
Terry and Kaye Groce
Mr. and Mrs. Sid M. Groom, Jr.
Ben and Sylvia Grove
Dr. and Mrs. Robert D. Grubb
Mr. Leonard Gruenberg, Jr.
Mr. Werner Gubelin
Steve and Betty Guest
Ms. Clara Gumz
Herman and Gail Hackett
Mr. and Mrs. Harold E. Hackler
Mr. and Mrs. Jean Hale
Ms. Peggy Hale
Mr. and Mrs. George Haley
Mr. and Mrs. Richard C. Hall
Mr. and Mrs. L. Douglas Halley
Hall's Ranch, Inc.
Glen and Ann Hallum
Mr. and Mrs. Neal B. Hambleton
Terry and Denise Hamburger
Mrs. Pearl Hamm
Mrs. Patricia J. Hampton
Mr. and Mrs. Edward Hamra
Ms. Fredith S. Hanifan
Mr. and Mrs. Dwight Hankins
Mr. and Mrs. John T. Hannah



Ralph and G. W. Hannah
Mr. and Mrs. Roy L. Hanson
Mrs. James E. Hara
Col. (Retd.) and Mrs. Donald Haralson
Mr. and Mrs. George M. Harbison
Jim and Donna Hardin
Mrs. Barbara Hargis
Doug and Lou Hargrove
Mrs. Jane B. Harlow
Mr. and Mrs. Robert A. Harms
Eugene and Bertha Harraman
Clay and Joy Harrell
Mr. and Mrs. Arlyn Harris
Mrs. Eva Colvert Harris
Mr. and Mrs. Claude M. Harris III
Mr. and Mrs. Wesley Harrison
Fred and Elizabeth Harriss
Mr. James H. Harrod
Hart Manufacturing, Inc.
Rick and Lisa Hart
Bob and Margaret Hassler
Mr. and Mrs. Alvin J. Havens
Mr. and Mrs. Kenneth R. Hawkins
Larry and Shari Hawkins
Mr. John W. Hayden
Mrs. Helen Parkhurst Hayes
Mrs. Elizabeth Ann Hays
Mr. and Mrs. Robert J. Hays
Mr. and Mrs. Skip Healey
Mrs. Mike Healy
Mr. and Mrs. Jimmie Heard
Mrs. Aline Heartsill
Mr. Delbert L. Heathman
Ms. Allene Lent Heenan
Mrs. Margie Heflin
Miss Evelyn E. Helm
Ms. Marta K. Henderson
Ms. Frances Henderson
Mr. and Mrs. Frank Henke
Terry and Beth Henneke
Mr. Richard C. Henry
Mrs. Berneta R. Herbel
Jack and Susan Herron
Mr. and Mrs. Theodore Herstand
The Hertz Corporation
Mr. and Mrs. J.C. Hester, Jr.
Mr. and Mrs. James M. Hewgley, Jr.
Mr. and Mrs. Jerry Hewin
Mr. and Mrs. H.C. Hickman
Ms. Rose E. High
Mr. and Mrs. Dean Hill
Doug and Vicki Hill
Frank D. and Betty Jo Hill
Mrs. Mary Sue Hill
Ms. Barbara J. Hilterbran
Ron and Sue Hobbs

Vince and Mona Hoehner
Peter and Susan Hoffman
Mr. and Mrs. Brendan Hoffman
Mr. and Mrs. Dan Hogan, III
Mrs. Zemirue Holden
Mrs. Molly Holder
Jim and Mary Holder
Ms. Jean S. Holland
Mr. and Mrs. Pat Holland
Ray and Loreta Holley
Alan and Barbara Hollingsworth
Hollis Cotton Oil Mill, Inc.
Mrs. Kathryn S. Hollopeter
Mr. and Mrs. Bobby L. Holloway
Mr. and Mrs. Philip L. Holloway
Mr. Robert W. Holrah
Mr. and Mrs. Burl Holmes
Dr. and Mrs. J. William Hood
Jerry T. and Catherine W. Hooper
Mr. Tim Hopkins
Mr. and Mrs. Alva Devers Horine
Bruce and Nina Horn
Mr. and Mrs. Paul H. Horton
Mrs. Beatrice A. Horton
Mr. and Mrs. Dick S. Horton
Robert E. and Sue House
Mrs. Maxine Housholder
Mrs. Polly Houston
Ken and Linda Howard
Mrs. Mabel M. Howard
Mr. and Mrs. William F. Howell
Howell-Stone Insurance, Inc.
Mr. and Mrs. W.T. Huddleston
Mr. and Mrs. David Hudiburg
Mr. Kurt L. Hudson
Mr. and Mrs. Paul Huffman
Mr. Bobby G. Huggins
Mrs. Kay A. Hughes
Jack and Michele Hughes
Mr. and Mrs. Larry Hull
Mrs. Kay Humphrey
Mrs. Hilda Hunt
Mrs. Mary Katherine Hurley
Mrs. Alice C. Hurst
Mrs. Kathryn Kyle Huser
Dr. and Mrs. A.B. Husky
Jay and Barbara Hutchens
Mr. George A. Hutchinson
Mrs. Alma B. Hutton
Mr. and Mrs. Bill R. Hyde
Thomas and Phyllis Ikard
Mr. and Mrs. John Inda
Indian Electric
Industrial Machine Company
Mr. and Mrs. Clyde Ingle
Mrs. Forest Igleheart



2005 Honor Roll

Ms. Jolene Ingram
 Mr. and Mrs. Richard Iorio
 Miss Jean M. Jackman
 Don and Lora Jacks
 Mr. and Mrs. Paul Jackson
 Mr. and Mrs. William R. Jackson
 Mr. and Mrs. George W. James
 Mr. and Mrs. Leon James
 Mr. and Mrs. Robert S. James
 Mr. and Mrs. Jan Jankowsky
 Robert and Gail Janukowicz
 Mrs. Neva Jarboe
 Mr. and Mrs. James R. Jenkins
 Mrs. Louise L. Jennings
 Jimmy's Wrecker Service
 Don and Jeanie Johns
 Mrs. Pat Johnson
 Mr. and Mrs. Berry M. Johnson
 Blake and Betty Johnson
 Mr. and Mrs. Carlos E. Johnson
 Darryl and Marcia Johnson
 Mrs. Jean Dean Johnson
 Logan and Kim Johnson
 Mr. Loyd Johnson
 Russell C. and Carol A. Johnson
 Mrs. James Johnston
 Mr. and Mrs. Melvin L. Johnston
 Mr. and Mrs. Ron Johnston
 Johnston Enterprises
 Bill and Sue Jones
 Mr. and Mrs. Gene Jones
 Mr. and Mrs. H. D. Jones
 Mr. and Mrs. Lonnie L. Jones, Jr.
 Louis and Belinda Jones
 Mrs. Marjory M. Jones
 Mr. Percy Jones
 Mr. and Mrs. Russell Jones
 Mr. and Mrs. Stephen Jones
 W. Douglas and Carolyn Jones
 Ms. Diana F. Jordan
 Mr. and Mrs. Melton Jordan, Jr.
 Mr. George H. Joseph
 Dr. and Mrs. F. David Kalbfleisch
 Jack and Bennie Kapella
 Kappa Kappa Gamma Mom's Club
 Karl's Apple Market Friends
 Mr. and Mrs. R.L. Kasper
 Mr. Max Katz
 Mr. Harold G. Keck
 Ms. Carolyn C. Keeble
 Don and Joyce Keel
 Mr. and Mrs. A. Carl Kelley
 Mr. and Mrs. Roy Kelley
 Mr. J.R. Kellison and Mrs. Mildred Kellison
 Mrs. Gloria A. Kemp
 Ken and Nina Kemp
 Joan and Joe Kendrick
 Mrs. Betty G. Kennedy
 Mr. and Mrs. Edward Kennedy
 John and Jane (Francis) Kenney
 Ms. Kathy Kenney
 Mr. Fredrick I. Kenny
 Bill and Phyllis Kerchner
 Ms. Nancy Kern
 Bob and Betty Kerns
 Herb and Roma Kerr
 Kerr-McGee Corporation, Gulf of Mexico Land Department
 Mr. and Mrs. August M. Khilling

Mr. and Mrs. Bill Kimbrough
 Mr. and Mrs. Thomas J. Kindt
 Mr. and Mrs. Alvin King
 Mr. and Mrs. Ralph G. Kirkhuff
 Mr. and Mrs. Donald Kirsch
 Mr. James B. Kite, Jr.
 Mr. and Mrs. Dan Klaus
 Bill and Carol Kleinhoff
 Mrs. Rosella Klutts
 Mrs. Fredina Koehrn
 Dr. and Mrs. William Stanley Kolar
 Ronald and Edie Korsgard
 Kris and Jennette Kreiger
 Mr. and Mrs. Connie M. Krivanek
 Mr. W.J. Kruckenberg
 Howard and Anna Claire Kuchta
 Mr. and Mrs. Joe Kuntz
 Dr. and Mrs. George Ladd
 Ms. Beverly Lafferrandre
 Ms. Linda P. Lambert
 Ms. Vaughn dean Landes
 Charles and Nancy LaPorte
 Jeannine LaPorte
 Frederick and Lieselotte Larwig
 Ms. Nancy A. Lassiter
 Mrs. Margery B. Laub
 Dale and Patsy Lawyer
 Mr. and Mrs. R. Thomas Lay
 Mr. and Mrs. Lowell E. Leach
 Mrs. Mary G. Leathers
 Mr. and Mrs. Ervin Lebeda
 Mrs. Frances J. Lee
 Ms. Kelly Sue Lee
 Mr. Mark Lee
 Mr. Roger Lee
 Mr. and Mrs. Gary I. Leff
 Ms. Anita G. Lehmann
 Ms. Lavina M. Lehring
 Ms. Patricia Lemmons
 Mr. and Mrs. Robert Leshner
 Lee Alan and Carolyn S. Leslie
 Mr. and Mrs. H.W. Lessley
 Mr. Dayle B. Lester
 Miss Tommie Lou Levi
 Ms. Cuma Lewis
 Ms. G. Darlene Lewis
 Lewis Manufacturing Company
 Mr. and Mrs. John J. Lieb
 Mrs. Rena Lindemann
 Ms. Billie J. Lindsey
 Mrs. Jere E. Litchenburg
 Little Giant Pump Company
 Ms. Jean Lloyd
 Mr. John R. Loftus
 Mrs. Ruth London
 Mr. and Mrs. Wesley J. Long
 Donny and Karen Longest
 Haskell and Wilda Looney
 John and Kaye Love
 Sam and Helen Loveless
 Mr. Paul Lorenzino
 Mr. and Mrs. Jim Lorenz
 Mr. and Mrs. Willis Love
 Mr. and Mrs. Squire Luttrell
 Mrs. Nancy Lutz
 Mrs. Sue Lyles
 Mrs. Joan G. Lynch
 Mrs. Rachel E. Lynch
 Mr. and Mrs. James O. Lynn
 Mrs. Marian B. Lynn

Jerry and Dot Lyon
 Mr. and Mrs. Steve Mackey
 Ms. Ellen Madden
 Mr. Robert H. Madsen
 Mrs. Betty L. Mahaffay
 Michael Mahaffey and Assoc. PLLC
 Mrs. Alice Mahvi
 Mr. and Mrs. Owen H. Major
 Dudley and Sandra Malone
 Mr. and Mrs. Paul E. Maly
 Ms. Shelly Manis
 Ms. Shirley Mankin
 Mr. and Mrs. Walter Marianelli
 Phil and Shari Marker
 Marlow Physician's Clinic
 Stan and Dee Ann Marshall
 Mrs. Elaine Martin
 Mr. and Mrs. James Martin
 Pat Martin
 Ms. Marguerite Martin
 Dr. and Mrs. Walter S. Mason
 Dr. and Mrs. Denis Matousek
 Ms. Barbara Matsen
 Dan and Susan Matthews
 Mauk Investment Company
 Mr. John A. Maxwell
 Maxwell Supply Company
 Mr. Mark Mayden
 Mr. and Mrs. George Mayfield
 Mrs. Carl Mayhall
 Mr. Bill McCarty
 Michael and Barbara McCauley
 Forrest and Louise McClung
 Mr. Jim McConathy
 Mr. Ron J. McCord
 Carl and Lu McCoy
 Roger and Kathy Gann McCoy
 Roger McCoy and Kathy Gann-McCoy
 Mr. Chris McCray
 Mr. Dennis Charles McDaniel
 Mr. and Mrs. Fred M. McDaniel
 George and Jackie McDannold
 Mr. and Mrs. Richard McDonald
 Mrs. Wilma Ruth McDonald
 Larry and Mary McEvoy
 Mr. and Mrs. Charles McFadden
 Ms. Linda McGechie
 Mr. Paul V. McGivern
 Mrs. Clair M. McGovern
 Mr. and Mrs. Dennis McGrath
 Ms. Betty McGuinness
 Mr. and Mrs. Jon McHugh
 Mrs. Shirley F. McHugh
 Allen and Pam McKenna
 Mr. Robert J. McKibbin
 Homer Charles and Johnanna McLaughlin
 Mrs. Vera McLellan
 Mr. and Mrs. Ronald McLeod
 Mr. Hatton McMahan, Sr.
 Ms. Carolyn McMurry
 Roy and Martha Lee McNaught
 Dr. and Mrs. Faye C. McQuiston
 Mr. R.M. McVay
 Mr. and Mrs. Bill R. McVey
 Mr. Harry T. McWilliams
 George and Sue Meacham
 Mrs. Elizabeth F. Meason
 Mr. Christopher Medley
 Mr. and Mrs. Kenneth R. Meek

Mr. Gary Meek
 Mr. and Mrs. Don Meeks
 Melvin and Belva Meench
 Mr. and Mrs. Carl U. Megehee
 Ronald G. and Patty Mercer
 Mr. and Mrs. Harvey S. Mercer, Jr.
 Bennie and Ruth Mercer
 Meridian Volunteer Fire Department
 Mr. and Mrs. John W. Meritt
 Mrs. Ella Jewell Meriwether
 Mrs. Jan Merrifield
 Harry and Hedra Merson
 Mr. and Mrs. Vincent Mesis, Jr.
 Metro Electrical Contractors, Inc.
 Mrs. Wanda M. Metzger
 Mr. Lindell Meyer
 Mr. Philip J. Meyer
 Butch and Carolyn Middleton
 Mr. John H. Middleton, Jr.
 Midwest Drywall Co., Inc.
 Ms. Victoria Mikysa
 Jim and Linda Miles
 Mrs. Eulamae Miller
 Jim and Mary Miller
 Mr. Lonnie R. Miller
 Mel and Freddie Miller
 Mr. Terry B. Miller
 Mr. Waller C. Miller
 Ms. Fleeta Milligan
 Mr. and Mrs. Robert G. Mills
 Warren and Patricia Mills
 Joe and Ann Miraglio
 Dr. Dan Mitchell, Jr.
 Mr. Edward J. Mitchell
 John and Frances Mock
 Mr. and Mrs. Paul H. Mock
 Mr. and Mrs. Edward Moldaver
 Eddie and Bonnie Monarch
 Mrs. Lela Mae Mooney
 Bill and Gerry Moore
 Carl and Nanette Moore
 Mr. and Mrs. David G. Moore
 Mr. Harry A. Moore
 Mr. and Mrs. Larry Moore
 Ms. Patricia L. Moore
 Steve and Nancy Moore
 Troy and Vinita Moore
 Warren and Letha Moore
 Bob and Pat Morgan
 Mr. and Mrs. Danny Morgan
 Mrs. Helen H. Morgan
 Mr. and Mrs. Jim Morgan
 Mr. and Mrs. Grady Morris
 Mr. and Mrs. William E. Morrison
 Mr. Jacob I. Morrow
 Mr. and Mrs. B.C. Mosley
 Mr. and Mrs. Robert Moss
 Mr. and Mrs. J.R. Mosteller
 Mr. Roy L. Mount, Jr.
 MRMCC Retirees Club
 Mrs. Donna Muchmore
 Mr. and Mrs. James A. Mueller
 Odas and Effie Mullin
 Mr. and Mrs. James R. Munger
 Mr. and Mrs. John Munkacsy
 Mrs. Irene Murphy
 Darryl and Carolyn Murray
 Mr. and Mrs. E.R. Murray
 Harold and Sherry Murray
 Mr. and Mrs. Joe Muse

Musgrove Merriott Smith
 Funeral Service
 Kay and Clark Musser
 Mustang Fuel Corporation
 Mr. and Mrs. Frank Myers
 John and Carole Myers
 Mr. Robert N. Naifeh, Sr.
 Mr. Edwin P. Nall
 Mr. and Mrs. Tom Nation
 National City Bank
 National City Bank, Pennsylvania
 National Immunization Program
 NB Services, Inc.
 Mrs. E. Irene Nedbalek
 Neighbors and Friends on East Joyce Terrace
 Ms. Betty J. Nelson
 Mr. and Mrs. Leon Nelson
 Mr. and Mrs. Paul Nelson
 Marcia and Art Nettleton
 Bud and Joann Nicholas
 Skip and Carol Nichols
 Gary and Vivian Nida
 Gov. and Mrs. George Nigh
 Miss Joann Nitzel
 Mr. Lloyd Noble, II
 Ms. Mary F. Noble
 Mr. R. David Nordyke
 Norick Investment Company
 Advised Fund
 Ms. Penny Norman
 Mrs. Betty Norris
 Mr. and Mrs. Dale Northup
 Northwest Pediatrics, Inc.
 Nowata County Conservation District
 Board of Directors and Staff
 Mr. Robert L. Nunn
 Mr. James B. Nutter
 Oak Tree Partners, LLC
 Mr. and Mrs. David Oates
 Jess and Ann O'Bar, Jr.
 Richard and Gloria O'Brien
 Mrs. Myrle K. O'Dell
 Office of General Council and Internal Audit Division Co-Workers
 Mrs. Elva M. O'Hara
 Oilwell Fracturing Services Inc.
 Okemah National Bank
 Oklahoma Allergy and Asthma Clinic
 Oklahoma Banana Distributing Co.
 Mrs. Frances Oldfield
 Ms. Tisha Onick
 Open Link Financial, Inc.
 Orr Insurance
 Osage Hills Fox and Wolf Hunters Association
 Dan and Nona Osborn
 Mr. and Mrs. Tim Osborn
 Osborne Electric Company
 OST Field OPS
 Ms. Phyllis Otey
 Mrs. Elizabeth F. Oven
 Overhead Door Company of Oklahoma City, Inc.
 Mr. and Mrs. Joe D. Owen
 L.A. Owen, Jr.
 Mr. Donald W. Owens
 Steve and Barbara Owens
 P and K Equipment, Inc., Enid
 Sam W. and JoAn Pace



Mark and Resa Pace
 Mr. and Mrs. Gerald M. Paine
 Mr. and Mrs. Ira W. Painton
 Mr. Fieldon L. Parham
 Bob and Mary Parker
 Ms. Charlyn K. Parker
 Mrs. Della Parker
 Mr. and Mrs. Gary D. Parker
 Mr. and Mrs. Richard M. Parker
 Miss Arlene Parrack
 Ms. Pam W. Parrish
 Max and Wilma Parr
 Mr. and Mrs. William F. Parrish
 Mrs. Rebecca J. Patten and Mr. Marvin York
 Mrs. Marsha Patton
 Mrs. Maxine J. Payne
 Ms. Gwendolyn K. Pearl
 Mr. Merlyn N. Pearson
 Mr. and Mrs. Leon Penn
 Ms. Elizabeth Perry
 Mrs. Eva L. Perry
 James T. and Alice M. Perry
 Glen and Beth Peterson
 Mr. Bill Phelps
 Mr. Daniel W. Phelps
 Mrs. Sue Phelps
 Gary and Janie Phillips
 Mrs. Susie Phillips
 Mr. Joe L. Pickens
 Pierce Brothers Charities
 Mr. Patrick G. Pierce
 Mr. W. DeVier Pierson
 Mrs. Jean E. Pilcher
 Pioneer Telephone Cooperative, Inc.
 Mr. and Mrs. Bill Pirtle
 Chris and Marcie Pixler
 Ms. Grace M. Plant
 Mr. D. Frank Plater, Jr.
 Ms. Laura L. Pompa
 Mr. and Mrs. Bob Poore
 Mrs. Martha Ann Pope
 Mr. and Mrs. Bill Porter
 Ms. Christine Posey
 Mrs. A. Byron Potter, Jr.
 Larry and Joanna Potts
 Ms. Karen Powell
 Mr. and Mrs. John L. Powell
 Mr. and Mrs. C. L. Ppool
 Mr. and Mrs. Ray L. Prange
 Mr. and Mrs. Jack H. Presnell
 Dr. and Mrs. Donald G. Preuss
 Mr. and Mrs. Brent Price
 Mrs. Jane G. Price
 Mr. and Mrs. Lyndle W. Price
 Victor and Carol Pryor
 Mrs. Anna Lee Pullen
 Mrs. Arlene L. Purcell
 Jimmie and Faye Purvine
 Puterbaugh Foundation

2005 Honor Roll

David and Linda Pyle
Foster and Beverly Mac Queen
Queensberry Club
Mr. and Mrs. Penn V. Rabb, Jr.
J.B. and Becky Rackley
Mr. and Mrs. Bill J. Ramsey
Dr. and Mrs. Steve Alan Ramsey
Ranchwood Manor Garden Club
Donald and Marie Rapier
Arne and Betty Ray
Mr. Henry Reager, II
Mrs. Rita Reager
Mrs. Dana Reavis
Mr. Edward Redstone
Dennis and Juanita Reed
Mrs. June Lois Reed
Ted and Mary Jane Reese
Ms. Gladys Regehr
Dr. and Mrs. Robert Reid
Daniel and Jamie Reineke
Mr. and Mrs. L. Rube Reingold
Mrs. Eleanor Renbarger
Retired Teachers Association
Woodward/Harper County
Retired Telephone Ladies-Chickasha
Mr. Bill Reynolds
David and Debi (Elliott) Rezabek
Mrs. Frankie Bohanon Rezabek
Ms. M.A. Rezabek
Mr. and Mrs. Raymond G. Rhoden
Mr. and Mrs. Glenn F. Rhodes
Mrs. M. Virginia Ribelin
Mr. and Mrs. Colonel A. Richardson
Bob and Carol Richerson
Mrs. Marinell Richison
Elbert and Kathryn Riddle
Mr. and Mrs. Donald C. Riffel
Bob and Barbara Ritz
Mr. and Mrs. Jerry W. Rizley
Ms. Kay Roberson
Ms. Ruby O. Roberts
Mr. and Mrs. Olin W. Roberts
Mr. and Mrs. Phil Roberts
Wilson and Bana Roberts
Mrs. Liz Robertson
Mrs. Susie Roberson
[36] Chuck and Phyllis Ann Robinson
Dave and Merna Jo Robinson
Mr. and Mrs. R.R. Robinson
Mr. and Mrs. Don L. Roby
Mrs. Elsie J. Rodgers
Mr. and Mrs. Richard A. Rodgers
Mr. and Mrs. William J. Rohrman
John and Sharon Ronck
Mr. and Mrs. Jerry P. Roop
Mr. K. Randy Roper
Ms. Sharon Rowse
Gary and Sharon Roth
Art and Lyla Rousseau
Mr. and Mrs. Don Rozell
Ms. Linda Rudd
Ms. Norma Russell
Mr. William T. Russell
Dr. and Mrs. Jim Ruster
Mr. and Mrs. James G. Ryan
Mr. and Mrs. Dee Sadler
Mr. Ed Safley
Mr. and Mrs. Harvey Salger
Mr. and Mrs. Christopher M. Salyer
Sam and Ladema Weathers

Samson Investment Company
Cecil and Norma Sanderson
SANCO Products Corporation
Sand Oak Farm Enterprises
Mr. and Mrs. Billy W. Sandlin
Mrs. Alfa Sasser
Trini and Carol Saucedo
Jon and Nancy Sawvell
Mrs. Sue Schempf
Ms. Gail E. Schmidt
Mr. and Mrs. Jerry D. Schoeb
Ms. Betty Schoenhals
Mr. and Mrs. Glenn Schrag
Mr. Albert F. Schrempf
Mr. and Mrs. Eric V. Schroeder
Mr. and Mrs. Mark Schultz
Mrs. Myra D. Schultz
Joe and Louise Schwemin
John and Jeanne Scott
Mrs. J.E. Scott
Chris Seaton
Shebester-Bechtel, Inc.
Mr. and Mrs. Truman Sechrist
Mr. and Mrs. James H. Segraves
Mr. Charles W. Selby
SES Group, PLLC
Mrs. Barbara B. Sewell
Sharp Sand Company, Inc.
Shattuck National Bank
Mr. and Mrs. Edwin L. Shedeck
Chet and Darlene Shelite
Steve and Laurie Shelley
Derman and Betty Shepherd
Rex A. and Marilyn Sheppard
Sherman Personnel Services
Mrs. Ellen Sherman
Mrs. Patricia E. Shirley
Dr. and Mrs. Robert L. Shirley
Mr. and Mrs. Bill Shopp
Mrs. Jackie Shouse
Mr. and Mrs. Chester Shrouder
Mr. Herman Siegfried
Mrs. Leona Shedeck Sikes
Bill and Betty Silvers
Ms. Donna Simic
Mrs. Tommee Simmons
Ms. Evelyn B. Simmons
Dan and Gerry Simonton
Ernest and Vicki Simpson
Mr. and Mrs. R.L. Simpson, III
Mr. Allen Sinai
Ray and Anna Lou Singleton
Sixth Grade Lunch Bunch
Mr. and Mrs. Robert Skaggs
Dr. and Mrs. Floyd Skarky
Gerald T. and Dorothy Skinner
Mr. and Mrs. A.B. Slaybaugh
Mr. John D. Slack
Mr. Stanley Slater
Paul and Paula Slaton
Mr. and Mrs. Charles Smart
Don and Clara Smart
Mr. Gerald W. Smart
Mrs. Pauline A. Smart
Mrs. Dorothy R. Smartt
Joe and Nelda Smiley
Mrs. Barbara J. Smith
Bill and Lorraine Smith
Dr. and Mrs. Bob Smith
Chad and Tricia Smith

Mr. and Mrs. Herbert D. Smith
Mr. James F. Smith
Mr. and Mrs. Jerry M. Smith
Jimmy W. and Mary Ellen Smith
Leon and Annetta Smith
Mr. and Mrs. Ralph C. Smith
Mr. and Mrs. Sherman E. Smith
Mrs. Vivian S. Smith
Miss Carolyn J. Snell
Mr. James Snodgrass
Mr. Richard G. Snyder
Gene and Marie Sommerfelt
Sooner Contract Bridge Unit #167
Sooner Rubber Products Company
Mrs. Korene Soter
Mark E. and Patti Southard
Mr. and Mrs. Sammy Southern
Southwestern Medical Center
Mr. and Mrs. Verlin Sowards
Carl and Barbaralee Spievogel
Jim and Carol Spillar
Mr. Edgar V. Springer, Jr.
SPS C.O. Employees
Mr. and Mrs. Fred D. Stafford
Steve and Penny Stahlman
Mr. and Mrs. Howard G. Stanley
Mr. William D. Stanley
Stansel Insurance Agency, Inc.
Mr. and Mrs. James Starkey
Ms. Jacquelyn Starr
Bobbie Starr Stauss
Mrs. Lorene Stebbins
Kenneth and D.J. Steele
Mr. Julian G. Stetnish
Quincy and Patty Stevens
Mr. and Mrs. B. Don Steveson
Ms. Ivy Odell Steward
Mrs. Marion C. Stewart
Mrs. McCrae (Teeny) Stewart
Stewart Real Estate
Mr. and Mrs. Ronnie Stewart
J.T. and Mary Jo Stites
Dr. and Mrs. John C. Stobbe
Rex E. Stockard, M.D.
Stockman-Oklahoma Livestock
Marketing, Inc.
Mr. and Mrs. Randall Stockton
Mr. and Mrs. Everett Stout
Ron and Jaquitta Stover
Richard and Sharon Strait
Mr. and Mrs. J.L. Strelecki
Mr. and Mrs. Ray D. Stroud
Mr. and Mrs. John L. Stuart
Tom and Vinita Sublette
Mrs. Barbara Sullivant
Mr. and Mrs. John Svoboda
Dr. and Mrs. Max L. Swartz
Mr. and Mrs. Ross O. Swimmer
Mr. and Mrs. Louis J. Swirczynski
Switzer Farms, Inc.
Mrs. Sue Seymour
T and W Tire
Mrs. James F. Tagge
Tahlequah Livestock Auction
Mr. William N. Taliaferro
Mr. and Mrs. Joe Talkington
N. Dale and Pauletta Talkington
Jack and Roxanne Tallon
Mrs. Miila L. Tappan
Ms. Rica Tarnoff

Bill and Helen Tate
Mr. and Mrs. Tom Tatman
Mrs. Velma G. Taylor
Barney and Jean Taylor
Mr. and Mrs. C.H. Taylor
Mrs. Gordon E. Taylor
Mr. and Mrs. Jim Taylor
Ms. Linda Taylor
Judge and Mrs. Steven W. Taylor
Mr. and Mrs. Warren E. Taylor
Chuck and Karolyn Teacle
Ms. Charlita F. Tefft
Miss Pat Teichmann
Telephone Pioneers of America
Telesis
Mrs. Grace O. Tensfield
Dr. and Mrs. Timothy W. Teske
Gordon and Virginia Thomas
Mrs. Henry E. Thomas
Johnnie and Madeline Thomas
Mr. and Mrs. L.D. Thomas
Tom A. Thomas, Jr. Fund
Mr. and Mrs. J. Syd Thomm
Mr. and Mrs. Arthur H. Thompson
Mr. David P. Thompson
Mr. and Mrs. Doyle Thompson
Ms. Joan H. Thompson
LeRoy and Jane Thompson
Mr. Lee B. Thompson, Jr.
Rev. and Mrs. Richard W. Thompson
Robert and Betsy Thorpe
Tia Juana Employees
Mrs. Merrilee J. Tieche
Mr. and Mrs. Tom Ridgway, III
Mr. and Mrs. Charles R. Tilden
Timberline Investment Company
Tinker Owens Insurance and
Marketing Services
Mr. and Mrs. James D. Tipton
Gene and Marilyn Torbett
Mr. C.E. Trousdale
Lawrence H. and Sherry L. Towell
TPA Women's Club
Mr. William R. Trautman
Miss Linda C. Tucker
Mrs. Geral Dene Turk
Charles and Julia Turnbull
Mr. Joseph Turnbull
Mr. Greg Turner
Harry E. and Billie Frank Turner
Mr. Charles E. Turney
Mr. and Mrs. Gale C. Turney
Kevin and Cassandra Tydings
United Methodist Church, Rocky
United Way of Tri-State, Inc.
USDA-NRCS
Ms. Lillie A. Van Cise
Ms. Eileen Vanderlee
Ms. Jean P. Vanderslice
Mr. and Mrs. Mickey Vanderwork
Bob and Carroll VanDeventer
Varian Associates, Inc.
Mr. and Mrs. John A. Vaughan, Sr.
Veterans Company A 120th Medics
Mr. Rollin W. Vickery
Ms. Claire H. Vincent
Dr. Mark Vincent
Vision Bank, Prague
Mr. and Mrs. Justin E. Vogt
Mr. and Mrs. F.W. Volker

Ms. Jean Vowell
Lamar and Kay Wade
Mrs. Carolyn Jean Wade
Mrs. Geraldine E. Wade
Mr. and Mrs. James P. Waggener
Mrs. Ruth L. Walker
Mr. and Mrs. Tom Walker
Cecil M. and Lillie Wall
Jack and Janie Wall
Newt and Ellen Wall
Ms. Arminda Wallace
Earl and Ruth Wallace
Mr. Richard Lee Wallace
Ms. Naomi Wallen
Dr. and Mrs. Chi-Sun Wang
Mr. Charles W. Ward
Jim and Jeanette Ward
Mr. Joe Ware
Mrs. Margie Gunter Ware
Allyn and Donna Warkentin
Jeremy and Lori Warren
Waters Charitable Foundation
Mr. and Mrs. Jim Waters
Mr. and Mrs. Max D. Watkins
Ltc. (Retd.) Jeff R. Watts
Mrs. Doreen Weibel
Ken and Barbra Weikel
Mrs. Joan Neustadt Weil
Mr. and Mrs. Ralph L. Weir
Ms. Harriet Weirich
Mrs. Carol Weiss
Mr. and Mrs. William L. Weiss
Mr. and Mrs. Joe Wells
Ted and Gail Wernick
Mr. E. Dean Werries
Mrs. Evelyn J. West
Ray and Donna West
Jim and Bobbie Westfahl
Wetherbee Electric, Inc.
WGS Limited
Larry and Janice Whaling
Dr. and Mrs. Willis Wheat
Darris and Natalie Wheeler
Barton and Karen Wherritt
Bob and Mary White
Bob and Sue White
Mr. and Mrs. Buford White and White
Lumber Company
Mr. and Mrs. Charles F. White
Ms. Doris L. White
Ferrill and Dolores (Oneth) White
Mr. and Mrs. Jack E. White
Patricia H. White, Ph.D.
Tom and Evelyn White
Ms. Wanda J. White
Mr. and Mrs. Donald B. Whitehead
Mr. Edgar Whitehead, III
Mrs. Freda Whitehead
Bob and Sarah Beth Whiteneck
L.B. and Janet Whitesell
Mr. Alfred Wilburn
Mr. and Mrs. George H. Wilburn
Mrs. Marvis Wilburn
Mr. and Mrs. Talmadge Wilcoxson
Miss Becky L. Wilkins
Bob and Eileen Williams
James and Wilma Williams
Mr. and Mrs. Jerrell R. Williams
Dr. and Mrs. Robert B. Williams
Russell and Mary Williams

Mr. and Mrs. Steve L. Williams
Mr. Jimmy H. Williamson
Mrs. Margaret E. Williamson
Mr. and Mrs. Randy D. Willis
Mr. and Mrs. Martin Wilson
Mr. and Mrs. Paris G. Wilson, Jr.
Mrs. Rosalie Winfrey
Mr. and Mrs. Phil Withrow
Mr. and Mrs. Jim Wittrock
Ms. Susan G. Wolf
Mr. and Mrs. Dennis Wolfe
Ms. Louise Wolff
Milt and Diana Wolff
Women of the Moose #1587
Mr. Ervin Wood
Mrs. Geraldine Wood
Dr. Julian D. Wood
Mrs. Mary Hermes Wood
Steve and Kyra Wood
Ms. Betty L. Wooden
Mrs. Marilyn Woolsey
Mrs. Anne W. Workman
Dr. and Mrs. Ronald B. Wright
Mr. and Mrs. Wayne Wunderlich
Ms. Bobbie Wunsch
Wyatt, Tarrant, Combs
Mr. and Mrs. Mitchell Wyatt
Mr. and Mrs. R. Deane Wymer
Ms. Darlene Wynne
Mr. Robert J. Wyskup
Mr. and Mrs. Clark L. Young
Mr. and Mrs. E.E. Young
James W. and Marilyn Young
Mr. and Mrs. Kent M. Young
Ronnie and Dee Ann Young
Mr. and Mrs. W.O. Young
Mrs. Patricia L. Younger
Mrs. Jeanne G. Zerboni
Mr. and Mrs. Lee R. Ziegelgruber
Mrs. Frances Zisman



[37] *We gratefully acknowledge our generous donors and thank you for your support. If we have inadvertently omitted or incorrectly listed your name or not included it in the proper category, please accept our apology. Please contact Venus Dartz, Manager of Constituent Records by phone at 405-271-7218 or by e-mail at venus-dartz@omrf.uhsc.edu and we will correct our records immediately. Please note that only gifts of \$100 and above are recognized in this 2005 Honor Roll list.*

Picture a world without Alzheimer's. Without cancer. Without lupus or heart disease. Just for a moment, imagine it.

In February 2005, OMRF launched the *Imagine* Campaign, a seven-year, \$100 million capital and endowment fundraising effort. This campaign will pay dividends far into the future—longer, healthier lives and brighter tomorrows for our children and grandchildren.

Our goals are ambitious, but no major achievement ever began with a small vision. Imagine what we can do...together.

Goal 1

Recruit and support an outstanding team of multi-talented scientists

OMRF's success depends on recruiting and retaining the most gifted scientists. We must provide them with competitive salaries, outstanding facilities and incentives to remain at OMRF. Endowed chairs, distinguished scientist positions and superior recruitment packages allow us not only to attract the highest caliber faculty but to keep them. Our recruitment target calls for adding 20 research scientists by 2012. These funds are crucial to the future of OMRF. **\$15 million**

Imagine

The Campaign for OMRF

Goal 2

Build and maintain high-quality administrative and support facilities

Top-quality administrative and support facilities, as well as state-of-the-art laboratories, are essential for maintaining research excellence. And as we grow, our infrastructure must expand to accommodate new staff and innovative research avenues. Outdated facilities must be refurbished and enlarged to keep our scientists at the forefront of research. Specifically, we must:

- Add tens of thousands of feet of lab space;
- Construct a new, state-of-the-art conference center and management building; and
- Improve common areas.

\$35 million

Goal 3

Grow our endowment to ensure ongoing future support

OMRF enjoys a future of limitless possibilities. Ensuring this future requires expanding our endowment to provide ongoing support for operations, administration and maintenance. Revenue generated by a healthy endowment frees up resources for program support, enabling researchers to unravel mysteries once thought unsolvable. Named endowments provide perpetual funding and recognition to the donor. An ample endowment can lead to life-changing discoveries. **\$20 million**

Goal 4

Provide funding for emerging research opportunities

Scientific pursuits seldom follow a straight line. As research progresses through a series of goals based on existing questions, new questions continually emerge. Promising theories can lie unexplored for lack of funding. Unrestricted gifts afford the flexibility to meet unexpected needs, enabling us to respond to unforeseen opportunities. Or to say "Go for it!" to a young scientist with a new and exciting research idea. **\$25 million**

Goal 5

Enrich our educational programs to train the scientists of tomorrow

Louis Pasteur called laboratories "sacred places where the future is born." How right he was—and is. OMRF labs teem with young people: graduate students, postdoctoral fellows, summer scholars and even schoolchildren, all with a passion to learn. We must continue to provide educational opportunities that encourage them to explore, take leadership roles and lead their peers to new levels of scientific achievement. **\$5 million**

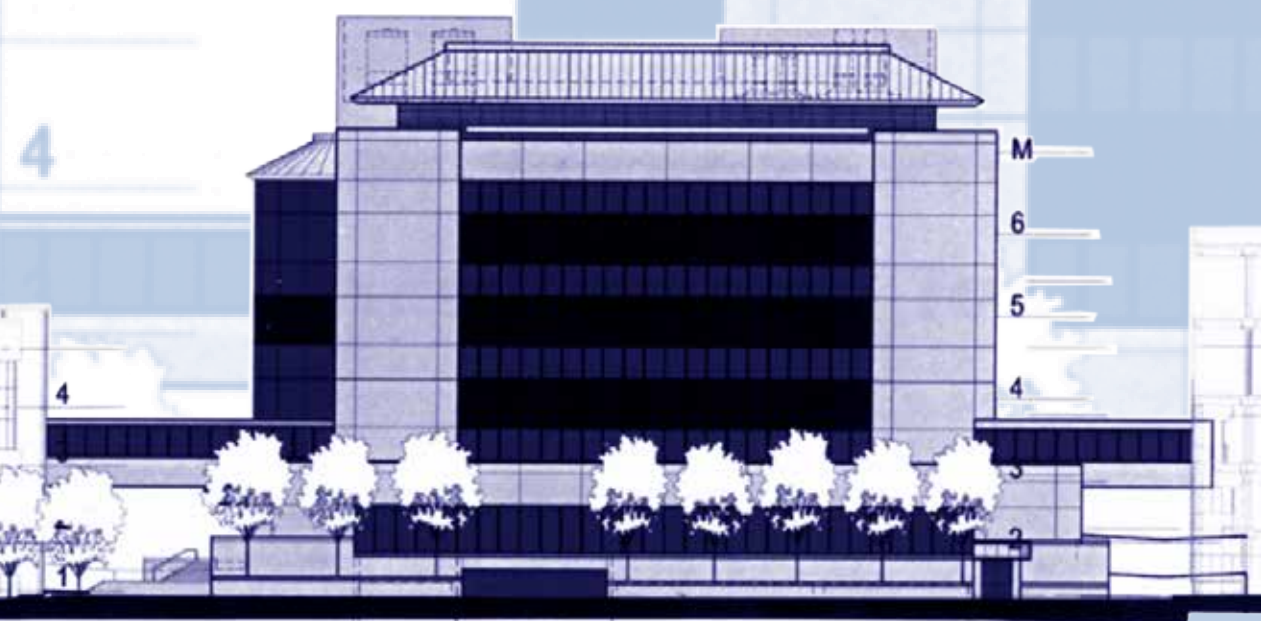


How You Can Help 5

For major gifts, a seven-year pledge period is suggested. All gifts, regardless of size, are tax-deductible to the extent allowable by law. Tax advantages can arise from gifts of appreciated stocks and bonds, life insurance policies and other personal property. We would welcome the opportunity to meet with you personally to discuss the many tax benefits that result from planned giving. [39]

A wide range of named gift opportunities exist for buildings, wings, programs and centers. Named gifts may be used to recognize the generosity of an individual, family, corporation, foundation or organization. They also present an opportunity to honor the memory of a loved one, friend or colleague.

For detailed information on giving opportunities, call Steve Blair at 405-271-8646.



Imagine the possibilities

OMRF Celebrates



1946-2006

Happy Birthday, OMRF!



Oklahoma Medical Research Foundation

825 Northeast 13th Street, Oklahoma City, OK 73104

405-271-7400

800-522-0211

www.OMRF.org